



Philips Consumer Lifestyle

Service Manual

PRODUCT INFORMATION

General:

- Mains operation
- World-wide automatic voltage selection
- Washable

Safety information

- This product meets the requirements regarding interference suppression on radio and TV.
- After the product has been repaired, it should function properly and has to meet the safety requirements as officially laid down at this moment.

TECHNICAL INFORMATION

- Voltage : 100 - 240 Volt / 50 - 60 Hz
- Motor voltage : 15 Volt
- Shaving heads : HQ8/3 - 4222 036 15870
- SAP coding : HQ7300

DISASSEMBLY- AND RE-ASSEMBLY ADVICE

Disassembly:

- Remove shaving unit, to prevent damaging during repairing
- Remove the 2 screws (A) out of the hairchamber
- Remove the hairchamber from the body
- Remove the 2 screws (B) on the backside of the shaver
- Remove the cover
- Remove the side grips
- Remove the housing by bending the hooks with a screwdriver
- Take out the basic body

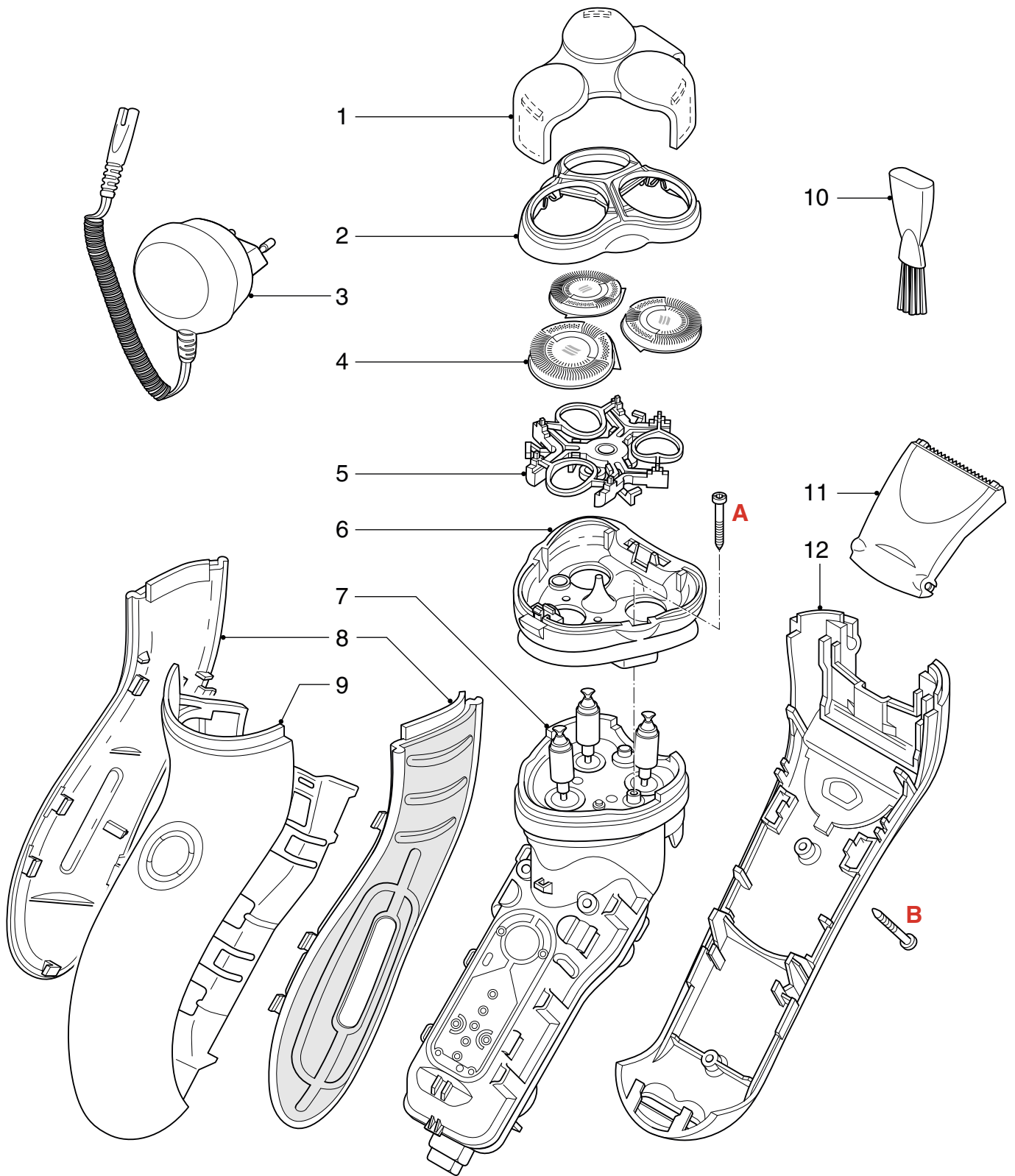
REPAIR INSTRUCTION

- No specific issues

OPTIONAL (accessories)

- Power plug curl.

Europa	4222 036 06790
Aus/Nz	4222 036 04020
GBR	4222 036 03970
Can/TW	4222 036 06800
MEX	4222 036 04030
KOR	4222 036 04000
JAP	4222 036 08930
PRC	4222 036 04040
ARG	4222 036 03980



Pos	Service code	Description
1	4222 036 14050	Protection cap
2	4222 036 12610	Bracket-assy
3	see optional	Power plug
4	4222 036 15870	Shaving heads
5	4222 036 12990	Holder-assy
6	4222 036 12640	Hairchamber
7	4222 036 12780	Basic body

Pos	Service code	Description
8	4222 036 15930	Grip left & right
9	4222 036 12460	Housing-assy
10	4222 036 02770	Brush
11	4222 036 12220	Trimmer assy
12	4222 036 12680	Back shell assy
	4222 036 11480	Screw