



Philips Consumer Lifestyle

Service Manual

PRODUCT INFORMATION

Shaving system:

- Lift & cut system
- Individually floating heads
- Anti-slip grip

Power system

- Automatic selection 100 - 240 Volt
- Rechargeable
- Up to 30 minutes shaving time

Safety information

- This product meets the requirements regarding interference suppression on radio and TV.
- After the product has been repaired, it should function properly and has to meet the safety requirements as officially laid down at this moment.

TECHNICAL INFORMATION

- Voltage : 100 - 240 Volt
- Charging time : 8 hours
- Shaving heads : 2 x HQ55
- SAP coding : HQ916

DISASSEMBLY- AND RE-ASSEMBLY ADVICE

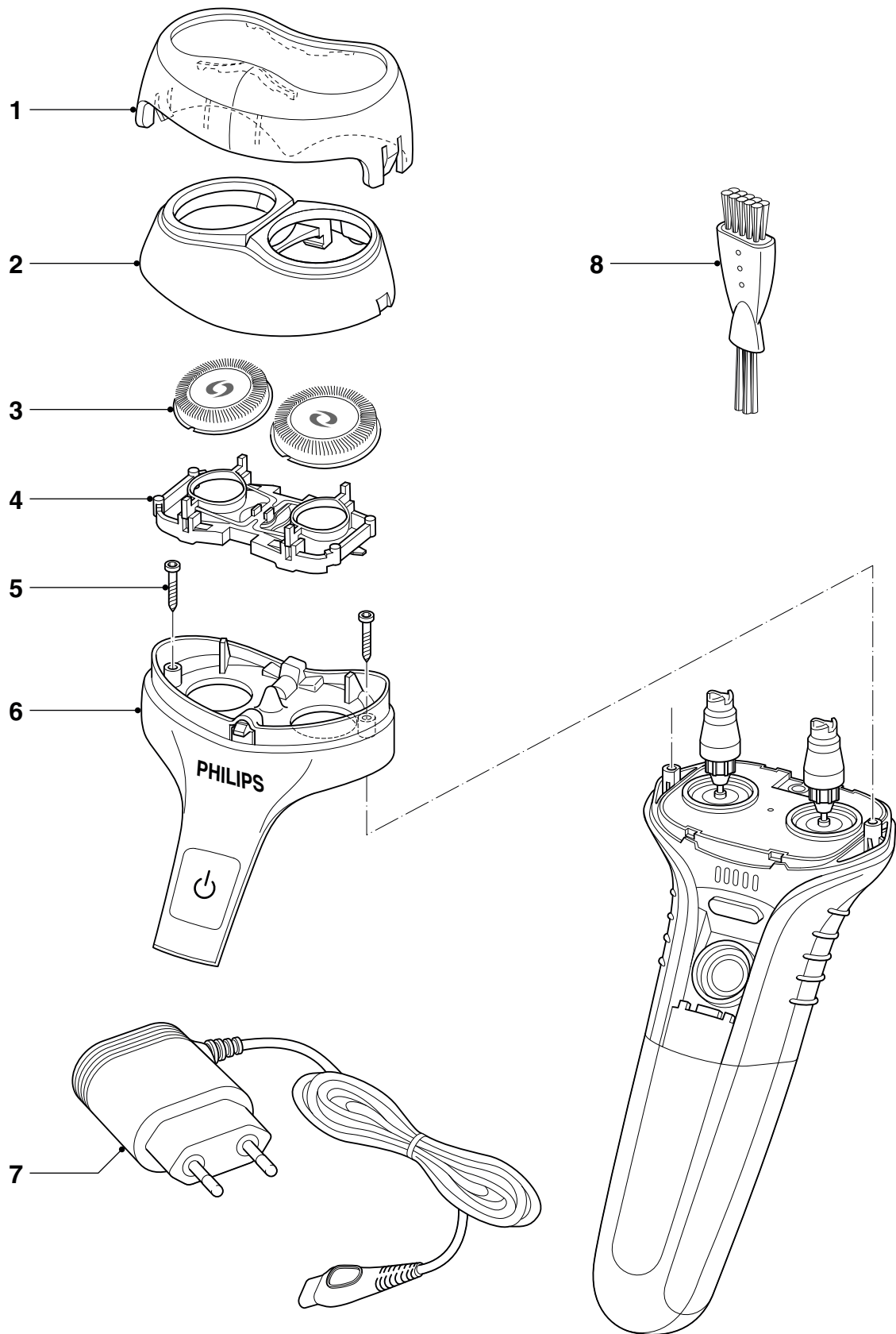
- No specific issues

REPAIR INSTRUCTION

- No specific issues

OPTIONAL (accessories)

- Power plug straight
 - ARG 4222 036 03760
 - MEX 4222 036 03810
 - JAP 4222 036 03870
 - EU 4222 036 04080
 - GBR 4222 036 04090
 - KOR 4222 036 04850
 - CAN/TW 4222 036 05110
 - AUS/NZ 4222 036 05120
 - NORELCO 4222 036 05160
 - PRC 4222 036 10320



Pos	Service code	Description
1	4222 036 16880	Protecting cap
2	4222 036 16920	Bracket
3	4222 036 17050	Shaving heads
4	4222 036 16930	Holder assy

Pos	Service code	Description
5	4822 502 14545	Screw
6	4222 036 16990	Hairchamber assy
7	see optional	Power plug
8	4222 036 02770	Cleaning brush