



Philips Consumer Lifestyle

Service Manual

PRODUCT INFORMATION

- This product meets the requirements regarding interference suppression on radio and TV.
- After the product has been repaired, it should function properly and has to meet the safety requirements as officially laid down at this moment.

TECHNICAL INFORMATION

- Power consumption : 700 W
- Voltage and Frequency : 220 - 240 V / 50 - 60 Hz
- Vario Speed unloaded : from 8.000 rpm to 15.000 rpm
- Turbo Speed unloaded : 18.000 rpm
- Volume size:
 - Small chopper : max. 170 ml
 - Big chopper : max. 700 ml

DISASSEMBLY- AND RE-ASSEMBLY ADVISE

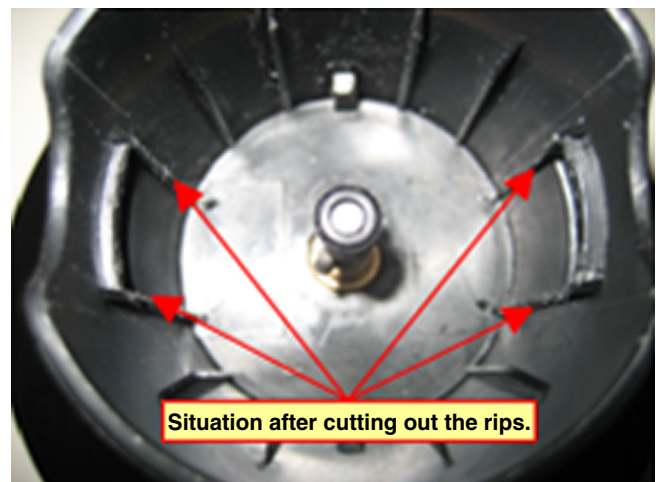
- No specific issues

OPTIONAL (accessories)

- No specific issues

Please use this repair instruction for all appliances with production date till 08/01.

How to make "new" accessories of HRI36x and HRI37x compatible to older appliances of these types



Actual Power unit

Old Power unit



PARTS LIST + EXPLODED VIEW

HRI372/90 / HRI372/91



Pos	Service code	Description
1	4203 035 84460	Blender Bar new
2	4203 065 66350	Beaker incl. Lid
3	4203 035 85600	Whisk Accessorie new
4	4203 065 66360	Wallhook (optional)
5	4203 035 85610	Chopping Interface small
6	4203 065 66380	Chopping Knife small
7	4203 065 66390	Chopping Bowl small
8	4203 035 85620	Chopping Interface large
9	4203 035 54100	Chopping Knife large
10	4203 035 54110	Ice Crushing Knife
11	4203 035 54120	Chopping Bowl large
12	4203 035 97821	Power unit HR1372/90 KR
	4203 035 99031	Power unit EEU