



Philips Consumer Lifestyle

Service Manual

PRODUCT INFORMATION

HR2080 = Basic Blender

HR2084 = HR2080 + Fruitfilter

Features:

- Powerful 650 W
- Speed control knob
- Special buttons for instant results
- 1,5 Litre glass jar
- Serrated blades
- Detachable knife unit
- Measuring cup 50 ml
- Suction feet
- Cord storage

Accessories:

- Fruit filter (only at HR2084)

Safety:

- Attachment safety system.
- This product meets the requirements regarding interference suppression on radio and TV.
- After the product has been repaired, it should function properly and has to meet the safety requirements as officially laid down at this moment.

■ = changed

TECHNICAL INFORMATION

- Power : 650 W
- Voltage / frequency : 220 - 240 V / 50 - 60 Hz
: 110 V / 60 Hz
- Jar capacity : 1,5 Litre
- Speed : 0 - 12000 rpm
- Cord length : 120 cm
- Packaging - F-Box
Dimensions (L x W x H) : 330 x 185 x 370 mm
Weight : 5,1 kg
- Length : 190 mm
- Width : 150 mm
- Height : 190 mm (only Power unit)
- Height with Jar + Lid : 395 mm

Materials:

- Housing : ABS plastic
- Jar : Borosilicate Glass
- Knife unit : Stainless steel
- Jar lid : PP + rubber
- Measuring cup : SAN
- Bottom + 2 sides : ABS
- Switch : ABS lacquered

DISASSEMBLY- AND RE-ASSEMBLY ADVISE

- No specific issues.

REPAIR INSTRUCTION

- No specific issues.

OPTIONAL (accessories)

- No specific issues.

| Pos | Service code | Description |
|-----|-----------------------|--|
| 1 | 9965 000 28659 | Blender coupling |
| 2 | 9965 000 28660 | Motor HV - 220 - 240 V / 50 - 60 Hz |
| | 9965 000 28661 | Motor LV - 110 V / 60 Hz |
| 3 | 9965 000 28662 | Housing IEC 4.0A |
| | 4203 035 93971 | Housing IEC 4.0B |
| | 4203 035 87160 | Housing IEC 5.0 |
| 4 | 9965 000 28663 | Airtunnel IEC 4.0A + IEC 4.0B |
| | 4203 035 88230 | Airtunnel IEC 5.0 |
| 5 | 9965 000 28664 | Safety lever IEC 4.0A + IEC 4.0B |
| | 4203 035 88240 | Switch actuator IEC 5.0 |
| 6 | 4203 035 88390 | Safety spring IEC 5.0 |
| 7 | 9965 000 28665 | Safety switch assy IEC 4.0A |
| | 4203 035 88250 | Safety Switch assy A IEC 4.0B |
| 8 | 4203 035 88260 | Safety Switch assy B IEC 5.0 |
| 9 | 9965 000 28666 | Crimp |
| 10 | 9965 000 28667 | Speed indication window |
| 11 | 9965 000 28668 | PCB - Switch assy - HV IEC 4.0A + IEC 4.0B |
| | 4203 035 88790 | PCB HV IEC 5.0 |
| | 4203 035 88800 | PCB LV IEC 5.0 |
| | 4203 035 88810 | PCB Korea IEC 5.0 |
| 12 | 9965 000 28669 | Bottom |
| 13 | 9965 000 28670 | Cordset EU |
| | 9965 000 28671 | Cordset Singapore |
| | 9965 000 28672 | Cordset Korea |
| | 9965 000 28673 | Cordset Taiwan |
| 14 | 9965 000 28674 | Measuring cup |
| 15 | 9965 000 28675 | Jar Lid IEC 4.0A + IEC 4.0B |
| | 4203 035 88820 | Jar Lid IEC 5.0 |
| 16 | 9965 000 28676 | Glass Jar IEC 4.0A + IEC 4.0B |
| | 4203 035 88840 | Glass Jar IEC 5.0 |
| 17 | 9965 000 28677 | Sealing ring IEC 4.0A + IEC 4.0B |
| | 4203 035 88290 | Sealing ring IEC 5.0 |
| 18 | 9965 000 28678 | Knife unit IEC 4.0A + IEC 4.0B |
| | 4203 035 88300 | Knife unit IEC 5.0 |
| 19 | 9965 000 28679 | Interface IEC 4.0A |
| | 4203 035 93981 | Interface IEC 4.0B |
| | 4203 035 87170 | Interface IEC 5.0 |
| 20 | 9965 000 28727 | Fruitfilter IEC 4.0A + IEC 4.0B |
| | 4203 035 88310 | Fruitfilter IEC 5.0 |

Please use the parts like below IEC explanation:

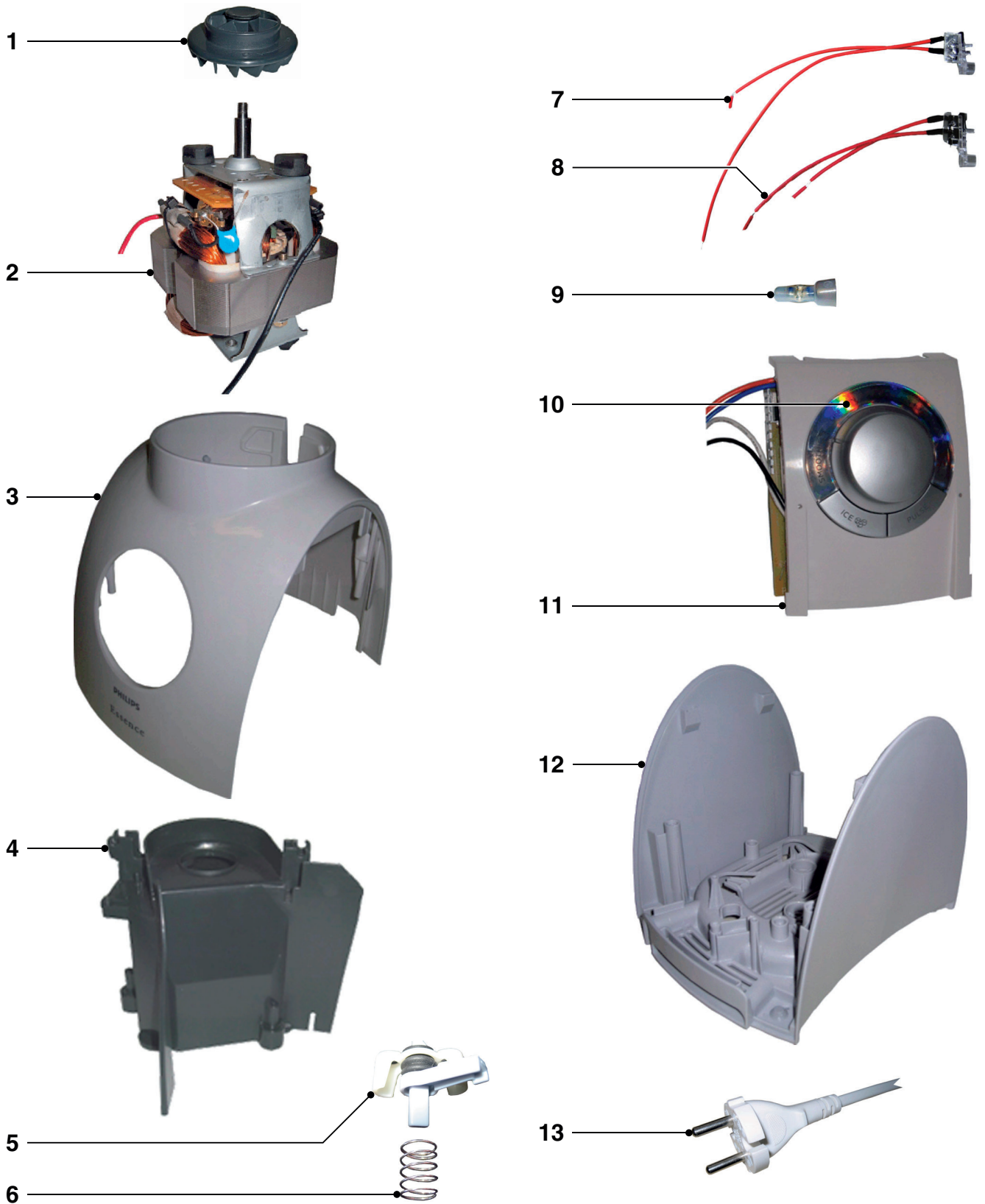
IEC 4.0A : Production week till 0813

IEC 4.0B : Production week between 0814 - 0906

IEC 5.0 : Production week from week 0907 onwards

EXPLODED VIEW

**HR2080/00 ROW
HR2084/00 ROW**



EXPLODED VIEW

**HR2080/00 ROW
HR2084/00 ROW**

