

Service
Service
Service



Philips Consumer Life Style

Service Manual

PRODUCT INFORMATION

Features:

- Powerful 650 W
- Speed control knob
- Special buttons for instant results
- 1,5 Litre glass jar
- Serrated blades
- Detachable knife unit
- Measuring cup 50 ml
- Suction feet
- Cord storage

Accessories:

- Fruit filter

Safety:

- Attachment safety system.
- This product meets the requirements regarding interference suppression on radio and TV.
- After the product has been repaired, it should function properly and has to meet the safety requirements as officially laid down at this moment.

TECHNICAL INFORMATION

- Power : 650 W
- Voltage / frequency : 220 - 240 V / 50 - 60 Hz
: 110 V / 60 Hz
- Jar capacity : 1,5 Litre
- Speed : 0 - 12000 rpm
- Cord length : 120 cm
- Packaging - F-Box
- Dimensions (L x W x H) : 330 x 185 x 370 mm
- Weight : 5,1 kg
- Length : 190 mm
- Width : 150 mm
- Height : 190 mm (only Power unit)
- Height with Jar + Lid : 395 mm

Materials:

- Housing : ABS plastic
- Jar : Borosilicate Glass
- Knife unit : Stainless steel
- Jar lid : PP + rubber
- Measuring cup : SAN
- Bottom + 2 sides : ABS
- Switch : ABS lacquered

DISASSEMBLY- AND RE-ASSEMBLY ADVISE

- No specific issues.

REPAIR INSTRUCTION

- No specific issues.

OPTIONAL (accessories)

- No specific issues.

Pos	Service code	Description
1	9965 000 28659	Blender coupling
2	9965 100 60301	Motor with fuse HV 220 -240/50-60 HZ
	9965 100 59747	Motor HV 220 -240/50-60 HZ AI wire motor version (not shown)
	9965 100 60302	Motor with fuse LV - 110 V / 60 Hz
	9965 100 60299	Motor with fuse HV China version
3	9965 000 28662	Housing IEC 4.0A
	4203 035 93971	Housing IEC 4.0B
	4203 035 87160	Housing IEC 5.0
4	4203 035 95741	Airtunnel IEC 4.0A + IEC 4.0B
	4203 035 88230	Airtunnel IEC 5.0
	9965 100 59754	Airtunnel IEC 5.0 for AI wire motor version (not shown)
5	9965 000 28664	Safety lever IEC 4.0A + IEC 4.0B
	4203 035 88240	Switch actuator IEC 5.0
6	4203 035 88390	Safety spring IEC 5.0
7	9965 000 28665	Safety switch assy IEC 4.0A
	4203 035 88250	Safety Switch assy A IEC 4.0B
8	4203 035 88260	Safety Switch assy B IEC 5.0
9	9965 000 28666	Crimp
10	9965 000 28667	Speed indication window
11	9965 000 28668	PCB - Switch assy - HV IEC 4.0A + IEC 4.0B
	4203 035 88790	PCB HV IEC 5.0
	4203 035 88800	PCB LV IEC 5.0
	4203 035 88810	PCB Korea IEC 5.0
12	9965 000 28669	Bottom
	9965 100 59753	Bottom for AI wire motor version (not shown)
13	9965 000 28670	Cordset EU
	9965 000 28671	Cordset Singapore
	9965 000 28672	Cordset Korea
	9965 000 28673	Cordset Taiwan
	4203 035 95751	Cordset CN
14	9965 000 28674	Measuring cup
15	9965 000 28675	Jar Lid IEC 4.0A + IEC 4.0B
	4203 035 88820	Jar Lid IEC 5.0
16	9965 000 28676	Glass Jar IEC 4.0A + IEC 4.0B
	4203 035 88840	Glass Jar IEC 5.0
17	9965 000 28677	Sealing ring IEC 4.0A + IEC 4.0B
	4203 035 88290	Sealing ring IEC 5.0
18	9965 000 28678	Knife unit IEC 4.0A + IEC 4.0B
	4203 035 88300	Knife unit IEC 5.0
19	9965 000 28679	Interface IEC 4.0A
	4203 035 93981	Interface IEC 4.0B
	4203 035 87170	Interface IEC 5.0
	9965 100 59752	Interface new collar design IEC 5.0 (not shown)
	9965 100 59755	Interface dark grey new collar design IEC 5.0 (not shown)
20	9965 000 28727	Fruitfilter IEC 4.0A + IEC 4.0B
	4203 035 88310	Fruitfilter IEC 5.0

Please use the parts like below IEC explanation:

IEC 4.0A : Production week till 0813

IEC 4.0B : Production week between 0814 - 0906

IEC 5.0 : Production week from week 0907 onwards

AI motor version : Production week from week1234 onwards except
PRC & LV version





Change affect:

Cord Press Plate Design Change

- Design change on cord fixing method for cost reduction (eliminated 1pc cord press plate and 2 pcs screw) and it would applied with Al-wire motor together.



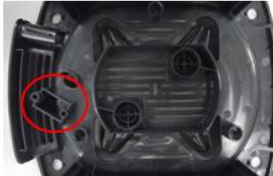
Copper-wire Motor Version

Al-wire Motor Version

Bottom Cover

- There is a "AL" marking in Al-wire motor version as shown below

"AL" Marking



Copper-wire Motor Version



Al-wire Motor Version

Air Guide

- There is an extra cord pressing feature in Al-wire motor version as shown below



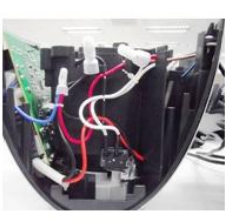
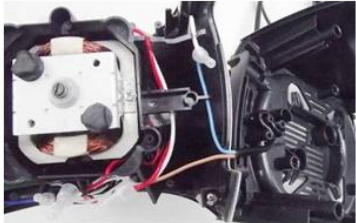
Copper-wire Motor Version



Al-wire Motor Version

Internal Wiring Method

- Below to show the internal wiring method of Al-wire motor version in details



Construction Difference From Power Unit

- The cord storage of Al-wire motor version is higher than copper-wire motor version with 5mm difference as shown below.



Copper-wire Motor Version



Al-wire Motor Version

1. Version A: Consolidate the formerly Joachim Service manuals and change copper wire motor to Al motor, change items include HV motor, Airtunnel, bottom which apply to all versions except PRC and LV motor version, also there is a new collar design for the interface, this change apply to all versions.
2. Version B: copper wire motor must add with fuse for using, so add new copper wire motor with fuse as spare parts for further demand.