

Service
Service
Service



Philips Consumer Life Style

Service Manual

PRODUCT INFORMATION

Features:

- Powerful 750 W
- Illuminated switch with variable speed control
- Illuminated buttons for dedicated functions
- 1,5 Litre glass jar
- Serrated blades
- Detachable knife unit
- Measuring cup 50 ml
- Suction feet
- Cord storage

Accessories:

- Fruit filter

Safety:

- Attachment safety system.
- This product meets the requirements regarding interference suppression on radio and TV.
- After the product has been repaired, it should function properly and has to meet the safety requirements as officially laid down at this moment.

TECHNICAL INFORMATION

- Power : 750 W
- Voltage / frequency : 220 - 240V / 50 - 60 Hz
- 110 V / 60 Hz
- Jar capacity : 1,5 Litre
- Speed : 0 - 12000 rpm
- Cord length : 120 cm
- Packaging - F-Box
- Dimensions (L x W x H) : 330 x 185 x 370 mm
- Weight : 5,1 kg
- Length : 190 mm
- Width : 150 mm
- Height : 190 mm (only Power unit)
- Height with Jar + Lid : 395 mm

Materials:

- Housing : Aluminum (1,5 mm), brushed surface
- Jar : Borosilicate Glass
- Knife unit : Stainless steel
- Jar lid : PP + rubber
- Measuring cup : SAN
- Bottom + 2 sides : ABS
- Switch : ABS lacquered

ASSEMBLY & DISASSEMBLY ADVICE

- No specific issues

REPAIR INSTRUCTION

- No specific issues

OPTIONAL (accessories)

- No specific issues

Pos	Service code	Description
1	9965 000 28659	Blender coupling
2	9965 000 28660	Motor HV - 220 - 240 V / 50 - 60 Hz
	9965 100 59747	Motor HV - 220 - 240 V / 50 - 60 Hz AI wire motor version (not shown)
	9965 000 28661	Motor LV - 110 V / 60 Hz
3	9965 000 28680	Housing IEC 4.0A
	4203 035 93991	Housing IEC 4.0B
	4203 035 87140	Housing IEC 5.0
	4203 035 94021	Housing Assy (TW)
4	9965 000 28663	Airtunnel IEC 4.0A + IEC 4.0B
	4203 035 89170	Airtunnel IEC 5.0
	9965 100 59748	Airtunnel IEC 5.0 for AI wire motor version (not shown)
5	9965 000 28664	Safety lever IEC 4.0A + IEC 4.0B
	4203 035 88240	Switch actuator IEC 5.0
6	4203 035 88390	Safety spring IEC 5.0
7	9965 000 28665	Safety switch assy IEC 4.0A
	4203 035 88270	Safety Switch assy A IEC 4.0B
8	4203 035 88280	Safety Switch assy B IEC 5.0
9	9965 000 28666	Crimp
10	9965 000 28681	Speed indication window HR2090/94
	4203 035 94031	Speed indication window(TW)
11	9965 000 28682	PCB - Switch assy - HV till prod. date 0943
	4203 035 93041	PCB - Switch assy - HV from prod. date 0944 onwards
	9965 000 29513	PCB - Switch assy - LV
	4203 035 94421	PCB - Switch Assy - LV (TW)
12	9965 000 28683	Bottom
	9965 100 59749	Bottom for AI motor version (not shown)
	4203 035 94401	Bottom (TW)
13	9965 000 28684	Cordset EU
	9965 000 28685	Cordset Switzerland
	9965 000 28686	Cordset UK
	9965 000 28687	Cordset PRC
	9965 000 28688	Cordset Korea
	9965 000 28689	Cordset Taiwan
14	9965 000 28690	Measuring cup
15	9965 000 28691	Jar Lid IEC 4.0A + IEC 4.0B
	4203 035 88830	Jar Lid IEC 5.0
	4203 035 94041	Jar Lid
16	9965 000 28676	Glass Jar IEC 4.0A + IEC 4.0B
	4203 035 88840	Glass Jar IEC 5.0
17	9965 000 28677	Sealing ring IEC 4.0A + IEC 4.0B
	4203 035 88290	Sealing ring IEC 5.0
18	9965 000 28678	Knife unit RI2930/01 IEC 4.0A + IEC 4.0B
	4203 035 88300	Knife unit RI2934/01 IEC 5.0
19	9965 000 28692	Interface RI2931/01 IEC 4.0A
	4203 035 94001	Interface IEC 4.0B
	4203 035 94411	Interface Black
	4203 035 88890	Interface IEC 5.0
	9965 100 59751	Interface new collar design IEC 5.0 (not shown)
	9965 100 59756	Interface black new collar design IEC 5.0 (not shown)
20	9965 000 28728	Fruitfilter IEC 4.0A + IEC 4.0B
	4203 035 88320	Fruitfilter IEC 5.0
	4203 035 88850	Fruitfilter

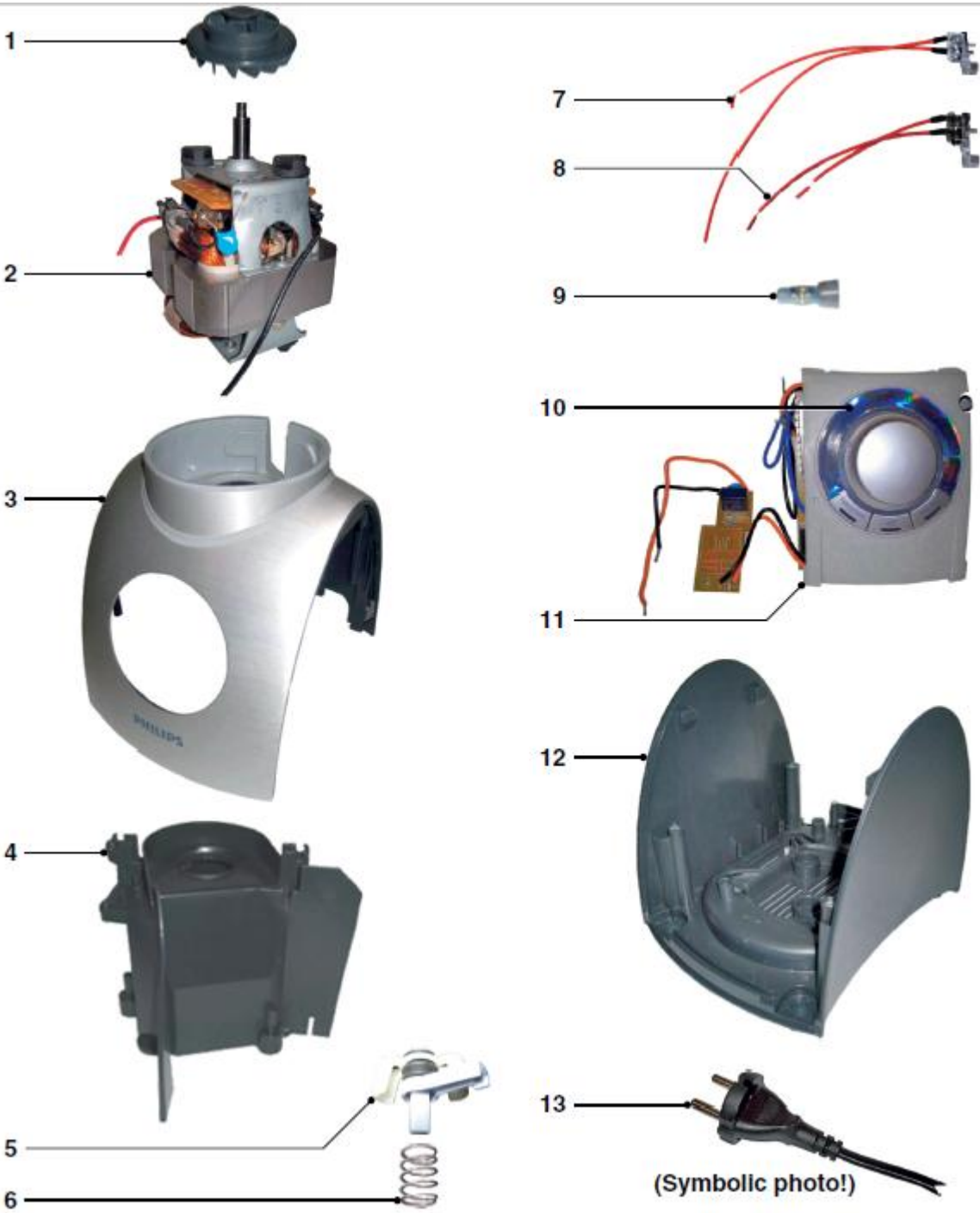
Please use the parts like below IEC explanation:

IEC 4.0A : Production week till 0813

IEC 4.0B : Production week between 0814 - 0906

IEC 5.0 : Production week from week 0907 onwards

AI motor version : Production week from week1234 onwards except
PRC & LV version





REPAIR INSTRUCTION

Open the Housing

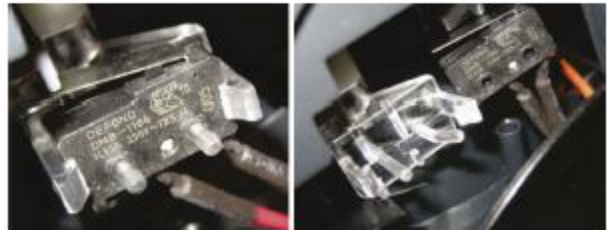
- Remove all 4 screws.



- Remove on both sides the safety switches from the plastic holder.



- Open the hooks on both sides and remove the switch with a small screw driver.



- When the safety switches are removed you can open the housing.



REPAIR INSTRUCTION

Change the driving coupling:

- Hold the screw behind the bottom,



- and turn the driving coupling in right direction.



Change the Motor Assy:

- Open the 4 screws and remove the airtunnel.



- Hold the screw with a screw driver and turn the driving coupling in right direction.



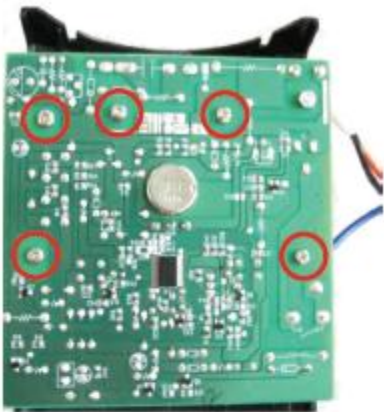
- Now you can change the motor



REPAIR INSTRUCTION

Change the PCB or the Indication window:

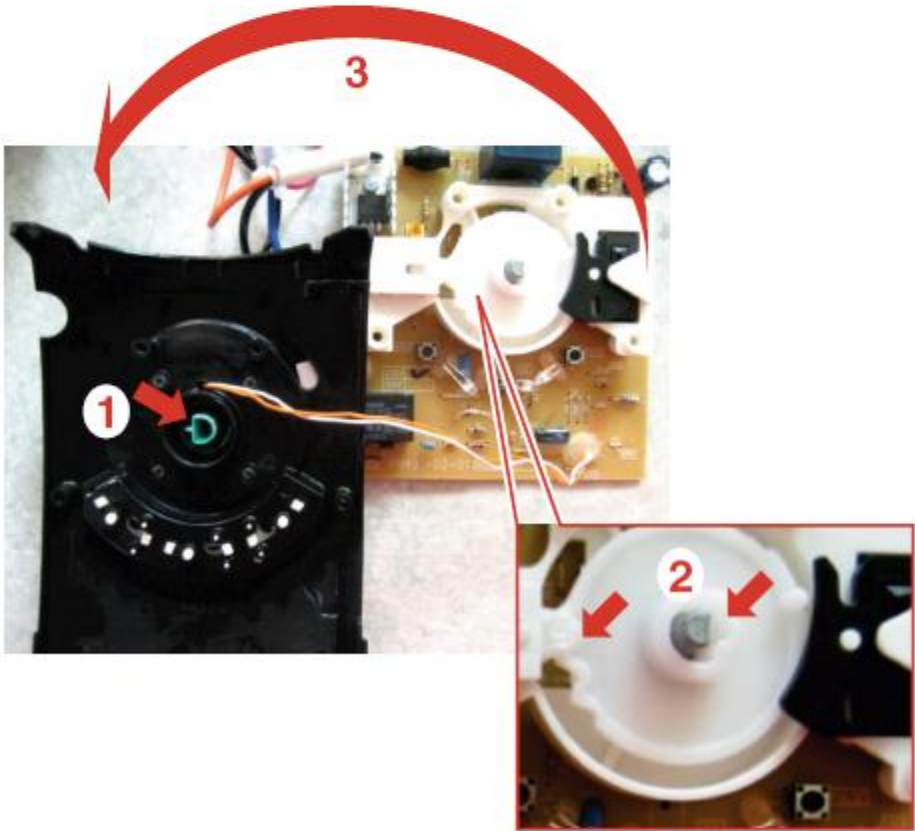
- For dissassembling remove the 5 screws.



PCB view

Assembling instruction:

- 1. Knob position => "OFF"
- 2. See red arrows for the position of the white part.
- 3. If this 3 position correct you can screw this 2 parts together.



Change affect:

Cord Press Plate Design Change

- Design change on cord fixing method for cost reduction (eliminated 1pc cord press plate and 2 pcs screw) and it would applied with Al-wire motor together.



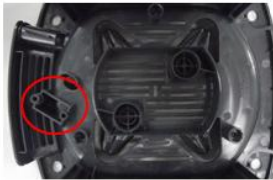
Copper-wire Motor Version



Al-wire Motor Version

Bottom Cover

- There is a "AL" marking in Al-wire motor version as shown below



Copper-wire Motor Version



Al-wire Motor Version

Air Guide

- There is an extra cord pressing feature in Al-wire motor version as shown below



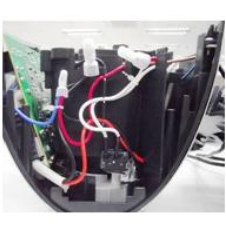
Copper-wire Motor Version



Al-wire Motor Version

Internal Wiring Method

- Below to show the internal wiring method of Al-wire motor version in details



Construction Difference From Power Unit

- The cord storage of Al-wire motor version is higher than copper-wire motor version with 5mm difference as shown below.



Copper-wire Motor Version



Al-wire Motor Version

Version A: Consolidate the formerly Joachim Service manuals and change copper wire motor to Al motor, change items include HV motor, airtunnel, bottom which apply to all versions except PRC and LV motor version, also there is a new collar design for the interface, this change apply to all versions.