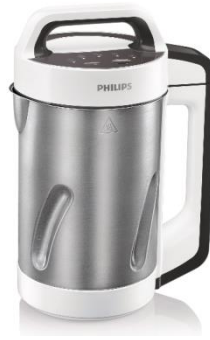


Service
Service
Service



HR2201/80

Philips Consumer Lifestyle

Service Manual

Technical information

- Voltage : 220 -230V
- Frequency rated : 50Hz
- Motor Power rated : 120W
- Heating Power rated : 900 - 990W
- Product dimensions(LxDxH) mm
205x153x310mm
- Capacity :1200ml
(for2~4 people)
- Net Weight : 2.0kg

Material

- Jug : Stainless steel
- Blade : stainless steel
- Motor housing : PP (food contact)

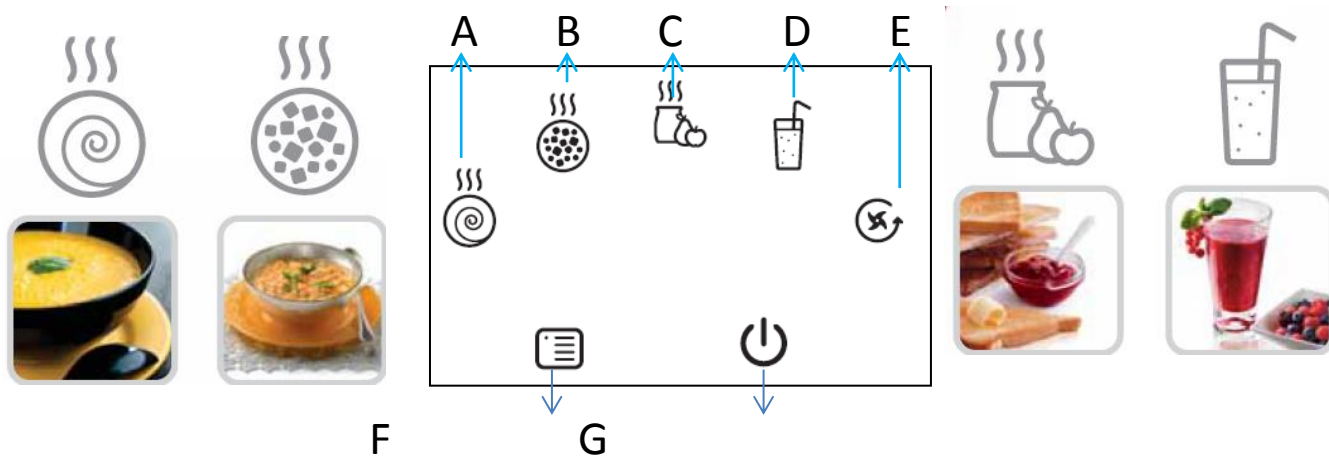
Power Cord:

HR2201/80



Product introduction

Control panel



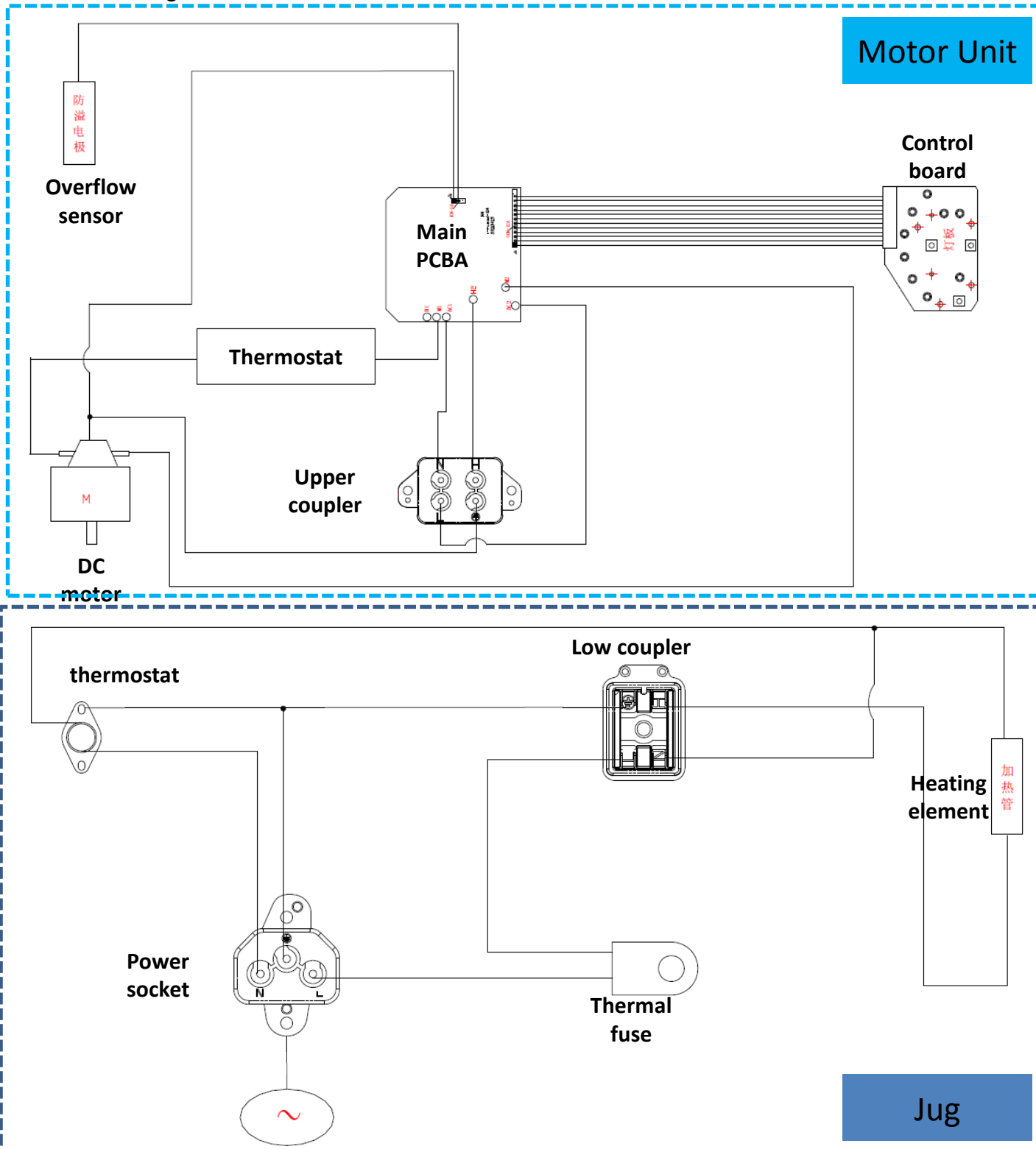
- A: Smooth soup program with light. → Smooth soup program to make a smooth soup in 23 minutes.
- B: Chunky soup program with light. → Chunky soup program to make a chunky soup in 20 minutes.
- C: Compote program with light. → Compote program to make a compote in 13 minutes.
- D: Smoothie program with light. → Smoothie program to make a smoothie in 3 minutes.
- E: Manual blending program with light
- F: Program selection button
- G: Start/stop button

Main features

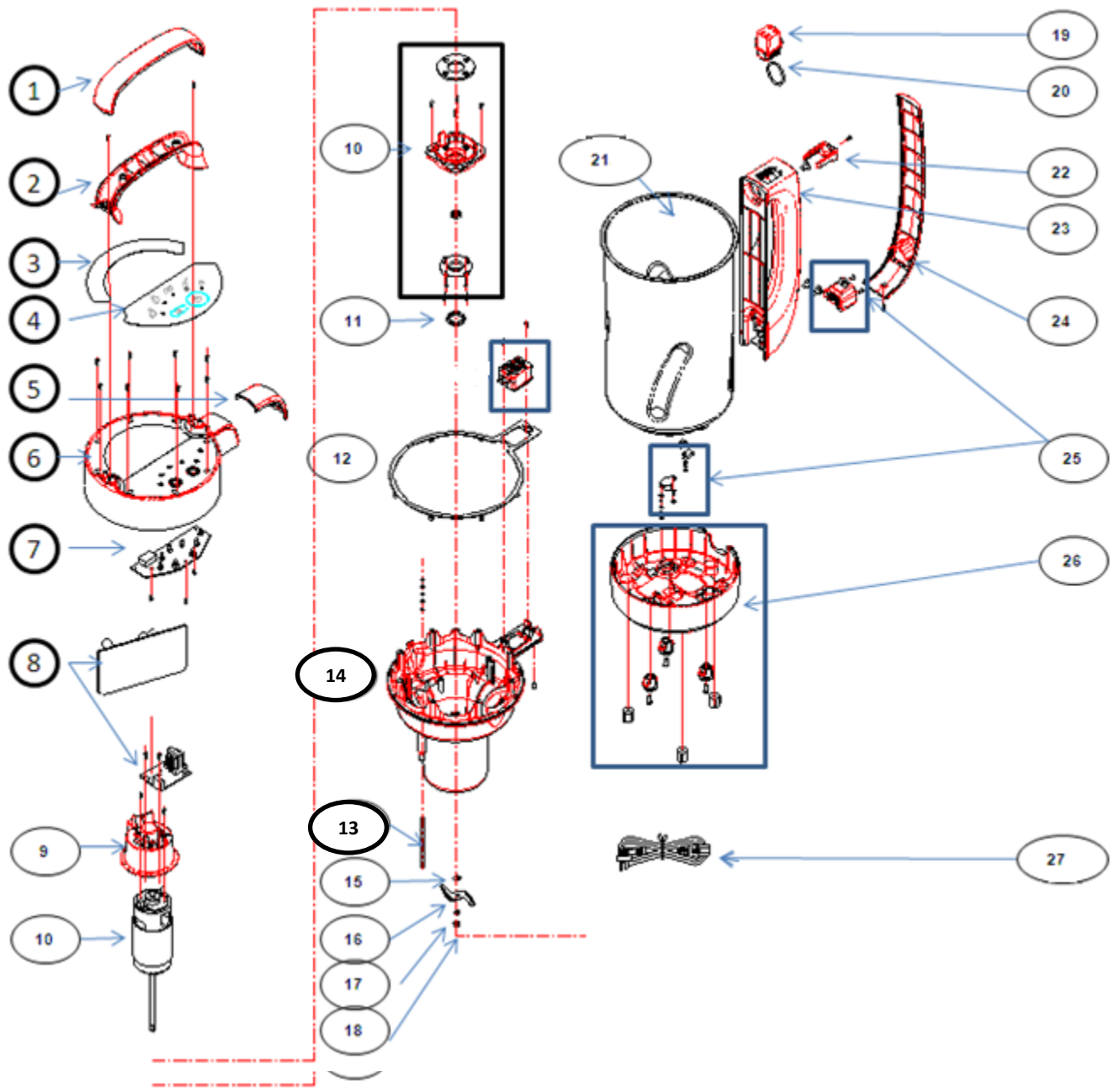
<p>①</p> 	
<p>②</p> 	<p>DC motor, light weight and small noise</p>
<p>③</p> 	<p>Unique blade design, perfect blading performance. Cageless design, easier clean</p>
<p>④</p> 	<p>Streamlined raised surface, ensure perfect blading performance</p>

Technical information

- Electrical diagram:



Exploded drawing



Spare parts

Position	12NC	Part name	PCM	Remark
1	996510060071	COVER OF LIB HANDLE	Q828K20AY80	
2	996510070897	LID HANDLE	Q828K360E47R	
3	996510070863	SCREW COVER	Y9329700002	
4	996510070862	CONTROL PANEL	Y9329700001	
5	996510070898	LID COVER	Q8286141Y80R	
6	996510070896	LID	Q828365AE47	
7 8	996510070894	PCB ASSY	A7761000008R	
9	996510054782	MOTOR COVER	Q7769420B55R	
10	996510070864	MOTOR ASSY WITH THERMOSTAT	B776077S201R	
11	996510070866	MOTOR BRACKET SEAL	X7761310001R	
12	996510054807	LID SEAL	X7762820002R	
13	996510054804	ANTI-SPILL SENSOR ASSY	B776328S201R	
14	996510057695	MOTOR HOUSING	Q776D490839R	
15	996510048973	BLADE WASHER	J0200000118R	
16	996510054793	BLADE	J2420000095R	
17	996510070861	DIAMETER 5 SPRING WASHER	J0150000437R	
18	996510048969	M5 LOCK NUT	J0020000518R	
19	996510057698	LOWER COUPLER ASSY	A7767060002R	
20	996510054785	SEAL FOR LOWER COUPLER	X6920930001R	
21	996510057693	INNER PAN ASSY (220V)	A7766110002R	
22	996510048981	COUPLER HOLDER	Q616371AB01	
23	996510070899	CUP HANDLE-	Q828F541Y80R	
24	996510057697	CUP HANDLE COVER	Q828A92AE47	
25	996510057701	SOCKET ASSY	A7764970002R	
26	996510070868	CUP BASE ASSY	Q7768681Y80R	
27	996510075403	POWER CORD (3 PINS)	D1AF11D1002R	

DISASSEMBLY ADVISE

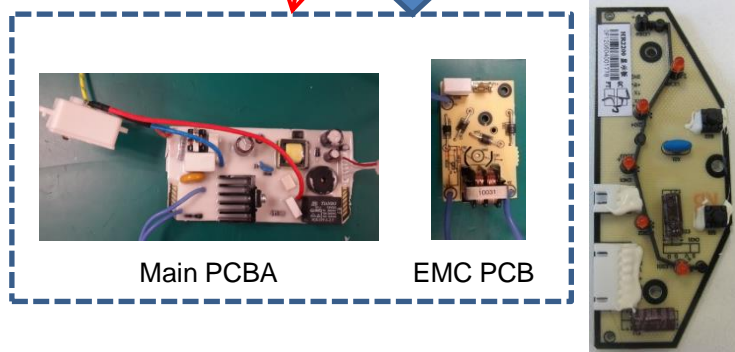
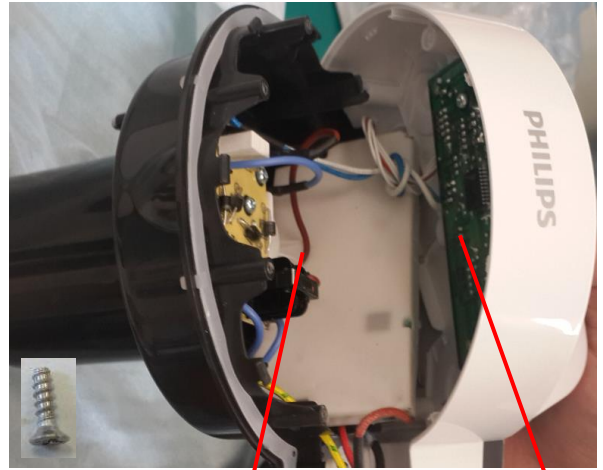


**Before you start dismantling!
For your safety be sure the plug is
disconnected from the mains!**

Step 1: Remove the upper handle.



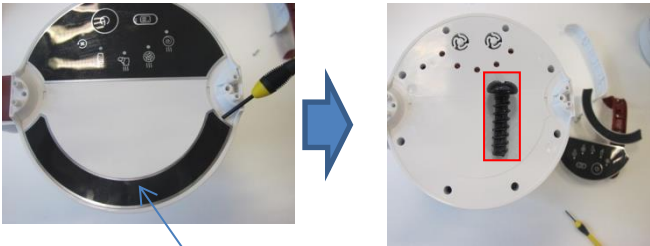
Step 3: Remove 9 fixing screws. You can get main PCBA, Key PCB.



Main PCBA Assy

Key PCBA

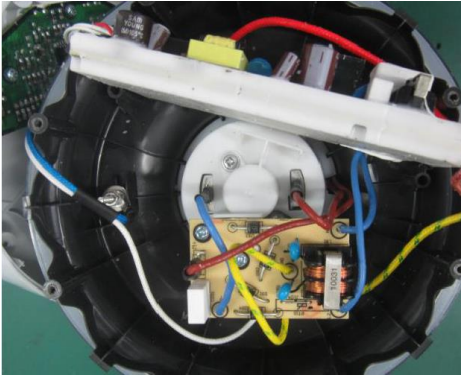
Step 2: Remove control panel and screw cover (adhesive label), you can touch eight screws.



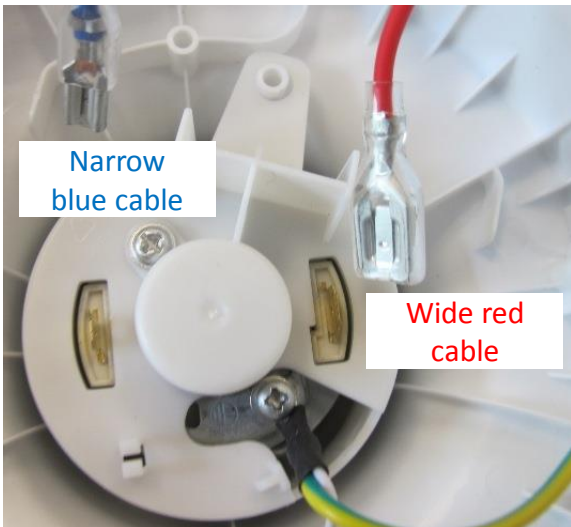
Screw cover

How to replace DC motor.

Step 1: Remove main PCBA and EMC PCB.



Easy-to-click design, easy to remove main PCBA.



Narrow blue cable

Wide red cable

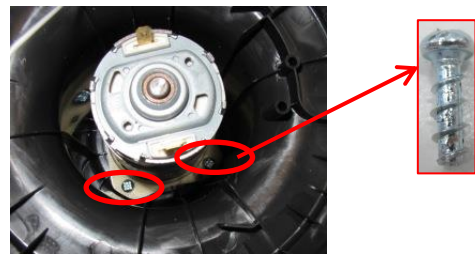
Step 2: Remove blade with spanner.



Step 3: Remove dust-protect cover.



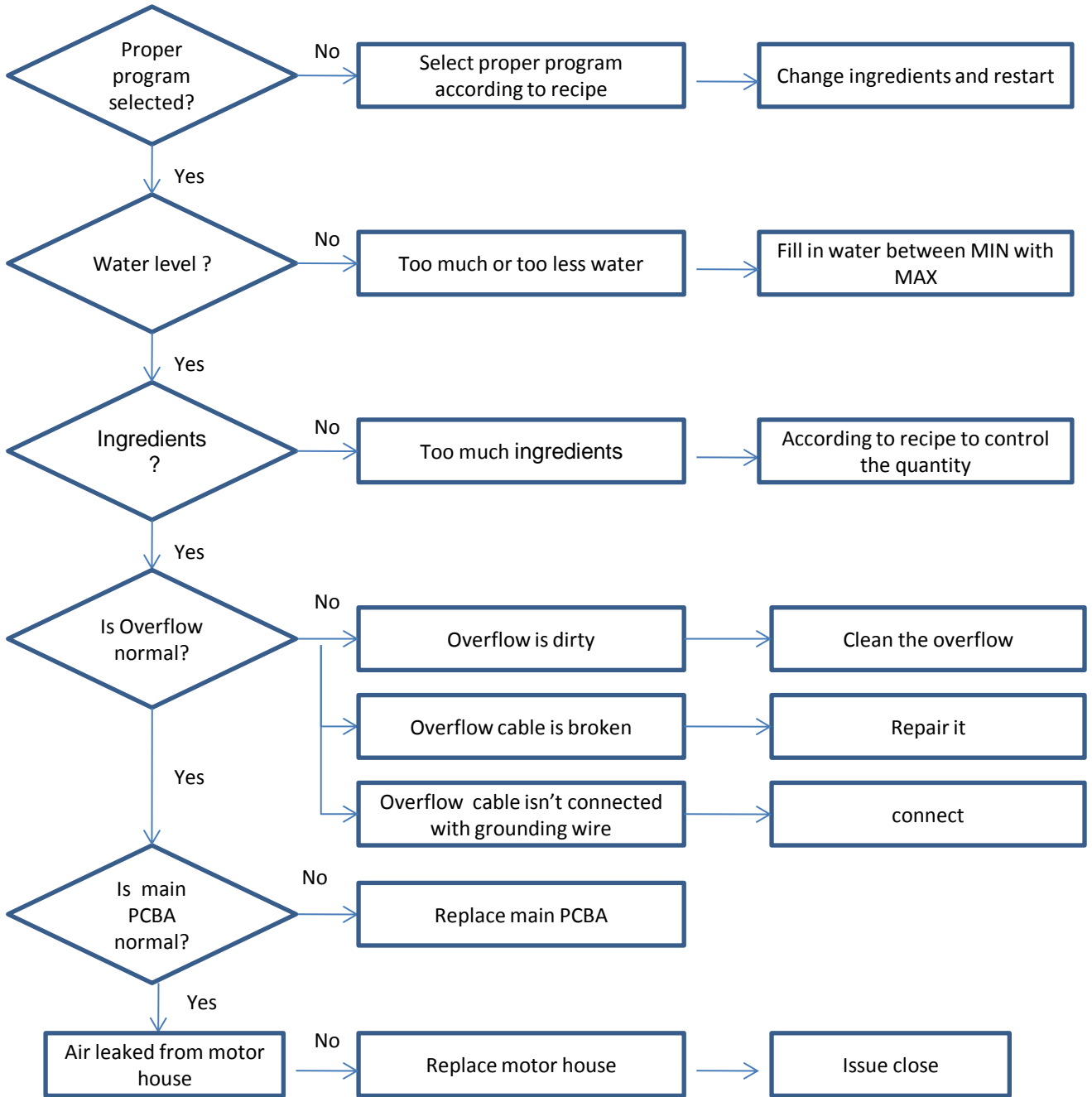
Step 4: Remove 4 fixing screws, then you can get out the motor.



DC motor

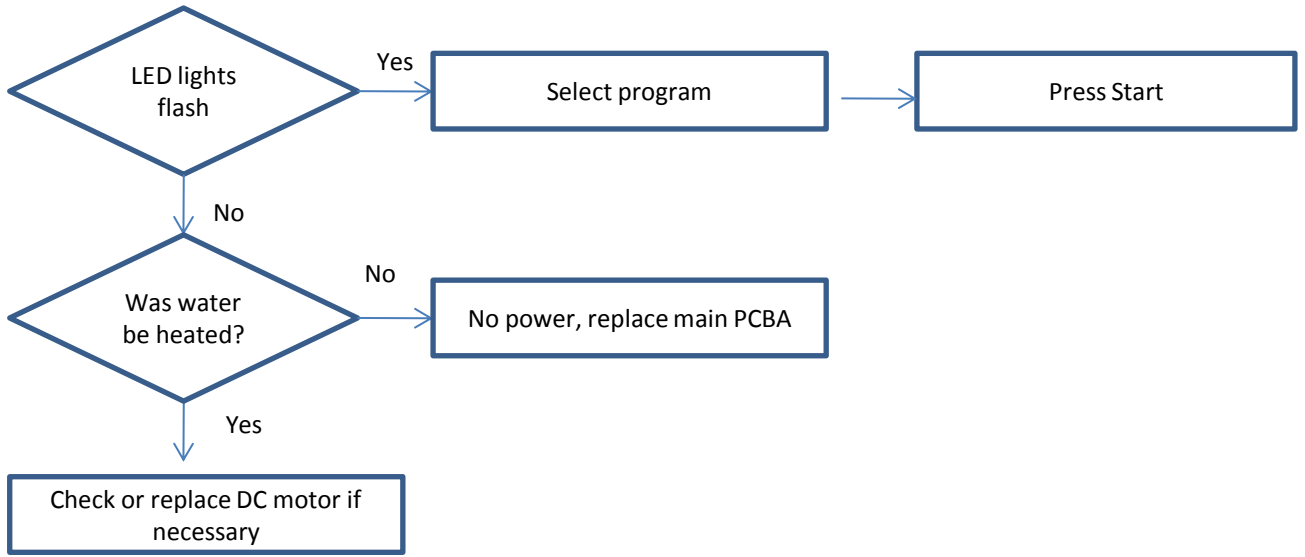
Trouble shooting

Overflow



Trouble shooting

After 20 minutes, ingredients are not bladed.



Alarming when power cord plugs in

