

Service Service Service



HR2726
HR2727
HR2728
HR2729
HR2526
HR2741
HR2742
HR7996
HR7995

Service Manual

PRODUCT INFORMATION

Features:

- Powerful 450W/600W motor
- Easily mince 2Kgs of meat in 1minute for HR2726/2526 and 2.9kgs/min for HR2727/28/29
- 1speed and 1reverse electronic control
- 2 year world-wide guarantee
- Recipe booklet

Accessories:

- 1 Kebbe accessory
- 1 Cookie accessory (HR2728 only)
- 2 different sausage horn
- 2 different cutting disc
- 4 different Drum (HR2728 only)
- 3 different Drum(HR2526&HR2729)
- Storage Box (HR2728 only)
- Accessories tray (HR2726/HR2727)
- Food tray
- Dust cover

Accessory model

- HR7996/HR7995

Safety

- This product meets the requirements regarding interference suppression on radio and TV.
- After the product has been repaired, it should function properly and has to meet the safety requirements as officially laid down at this moment.

TECHNICAL INFORMATION

- Power : 450 W (HR2726)
: 600 W (HR2727/2728/2729)
- Frequency : 50 / 60 Hz
: 50 Hz for Power Motor
- Speed : 1 speed and 1reverse
- Power cord set length : 1.2 m for HR2727
1.35m for HR2729
HR2726/28/2526
- Product size:
- Length : 350 mm
- Width : 155 mm
- Height : 350 mm
(with food pusher)
- Weight : < 8kg

Remark

- For consistency, the frequency on the products' sticker will all change to 50Hz(CCL motor or Power motor) from wk1308 onwards

REPAIR INSTRUCTIONS

Serial number explanation:

The serial number can be identified on the type plate sticker.

See example below.

Unique appliance ID combined with production date:

TRACK.YYWWDD

YY (Year)

WW (Week)

D (Day / 1 = Monday)

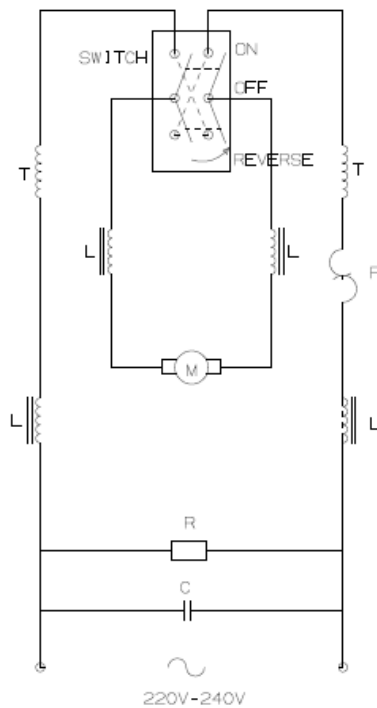
DISASSEMBLY- AND RE-ASSEMBLY ADVISE

- No specific issues

OPTIONAL (accessories)

- No specific issues

WIRING DIAGRAM



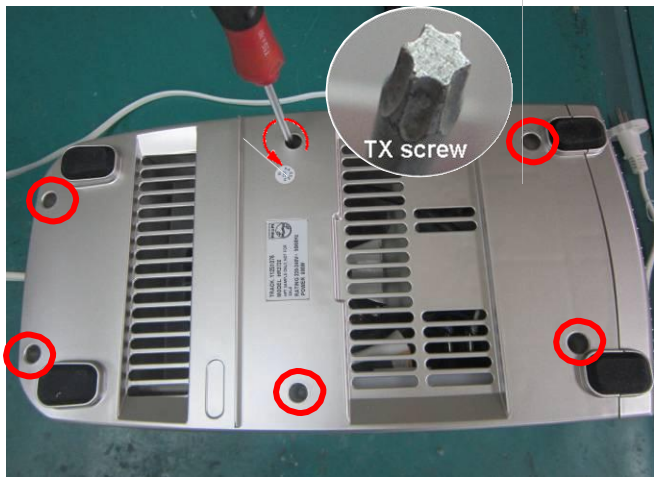
T: STATOR COIL
 L: CHOKE, 15uH
 R: RESISTANCE, 470KΩ
 C: X1 CAPACITOR, 220NF
 P: THERMAL PROTECTOR

Model	Motor	PCB
HR2726	CCL motor	0.22uF x-cap
	Power Motor	
HR2526	Power Motor	0.22uF x-cap
HR2727, 2728	CCL motor	0.22uF x-cap
	Power Motor	0.47uF x-cap

MOTOR REPAIR

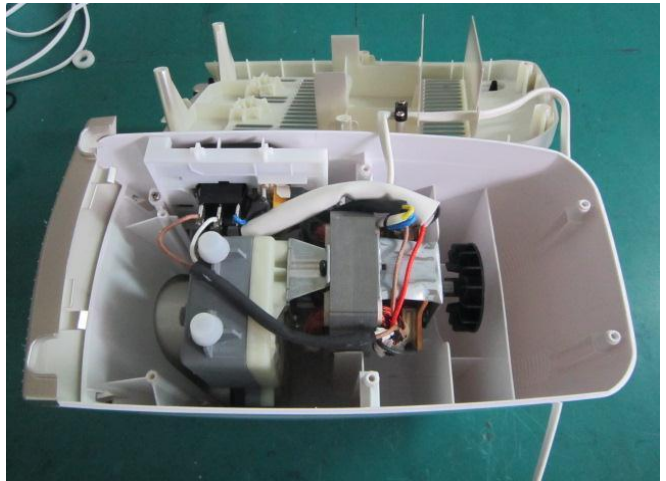
1. step:

open the 6 screws on the bottom side with a TX screw driver



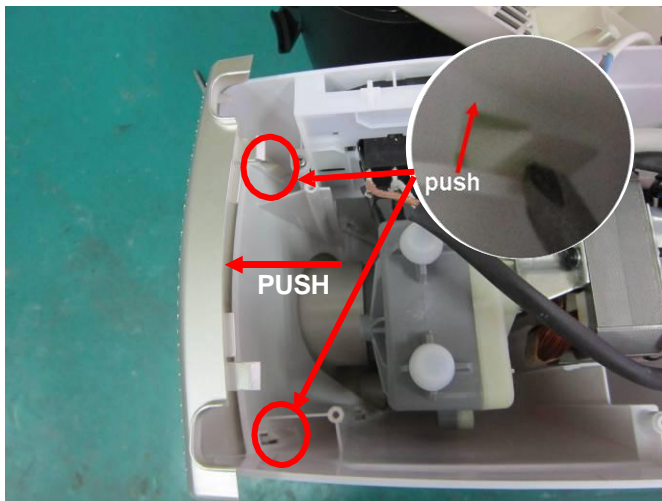
2. step:

then remove the bottom and can see inside



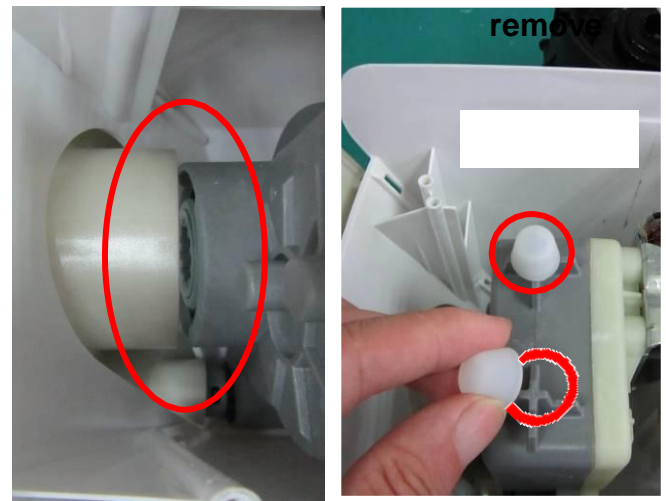
3. step:

Push 4 clasps by tool ,then push front cover by hand for distance.



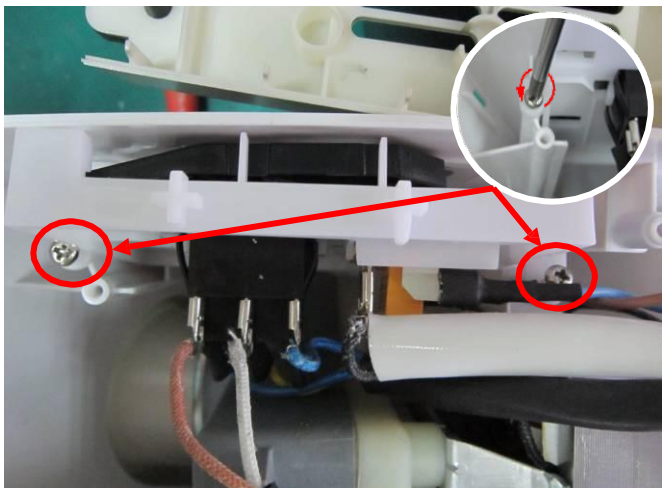
4. step:

it is ok and shop when the front cover out of gear box, then remove two cushions.

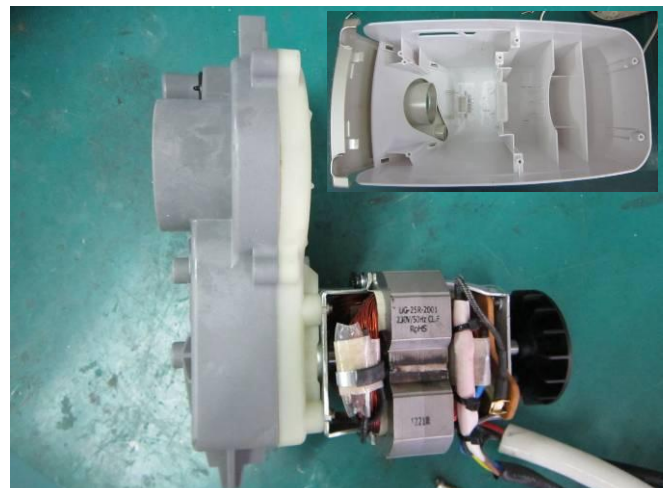


5. step:

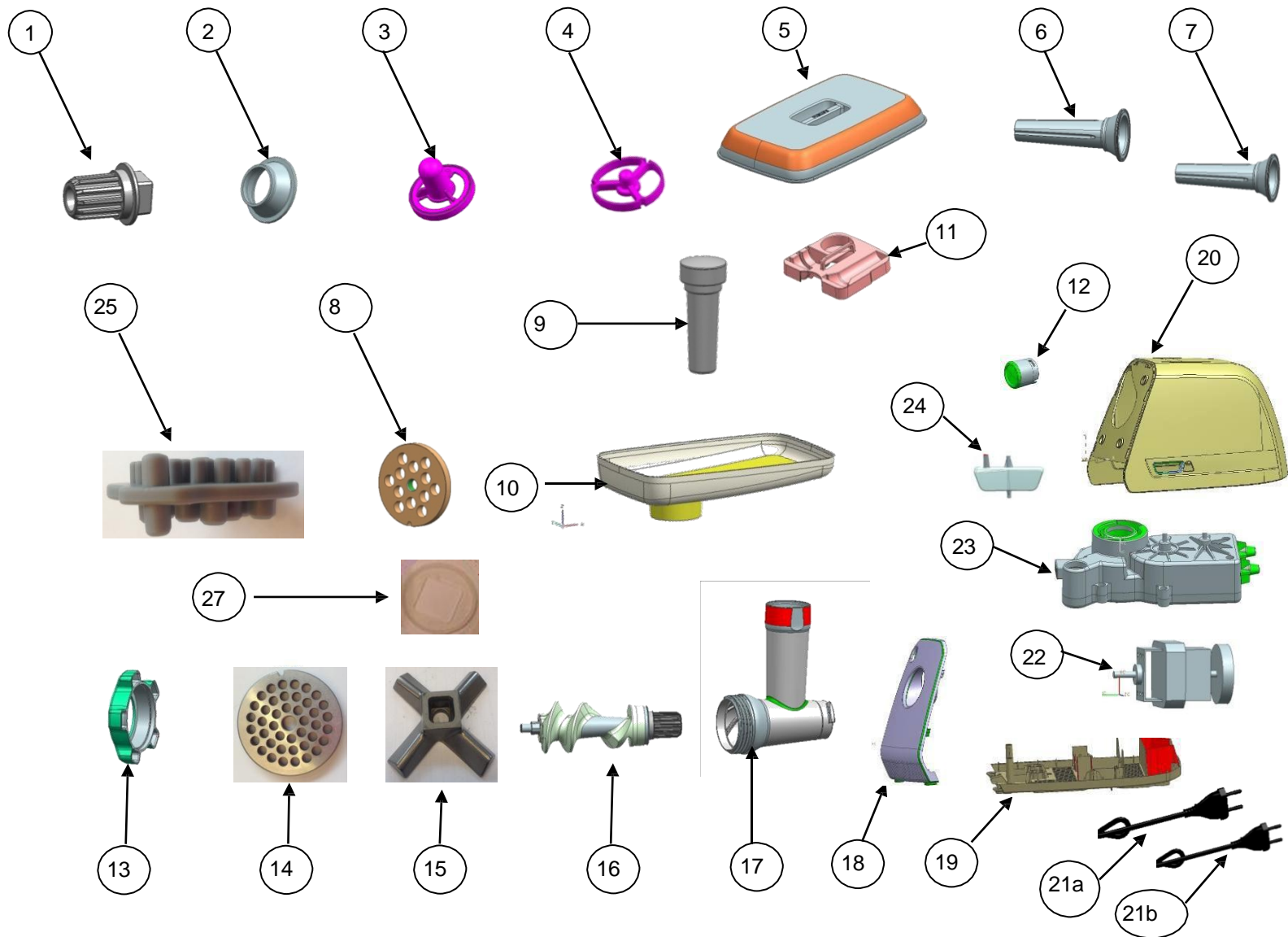
open the 2 screws use a screw driver .



6. step: now you can take motor out of Housing Cover and check it.

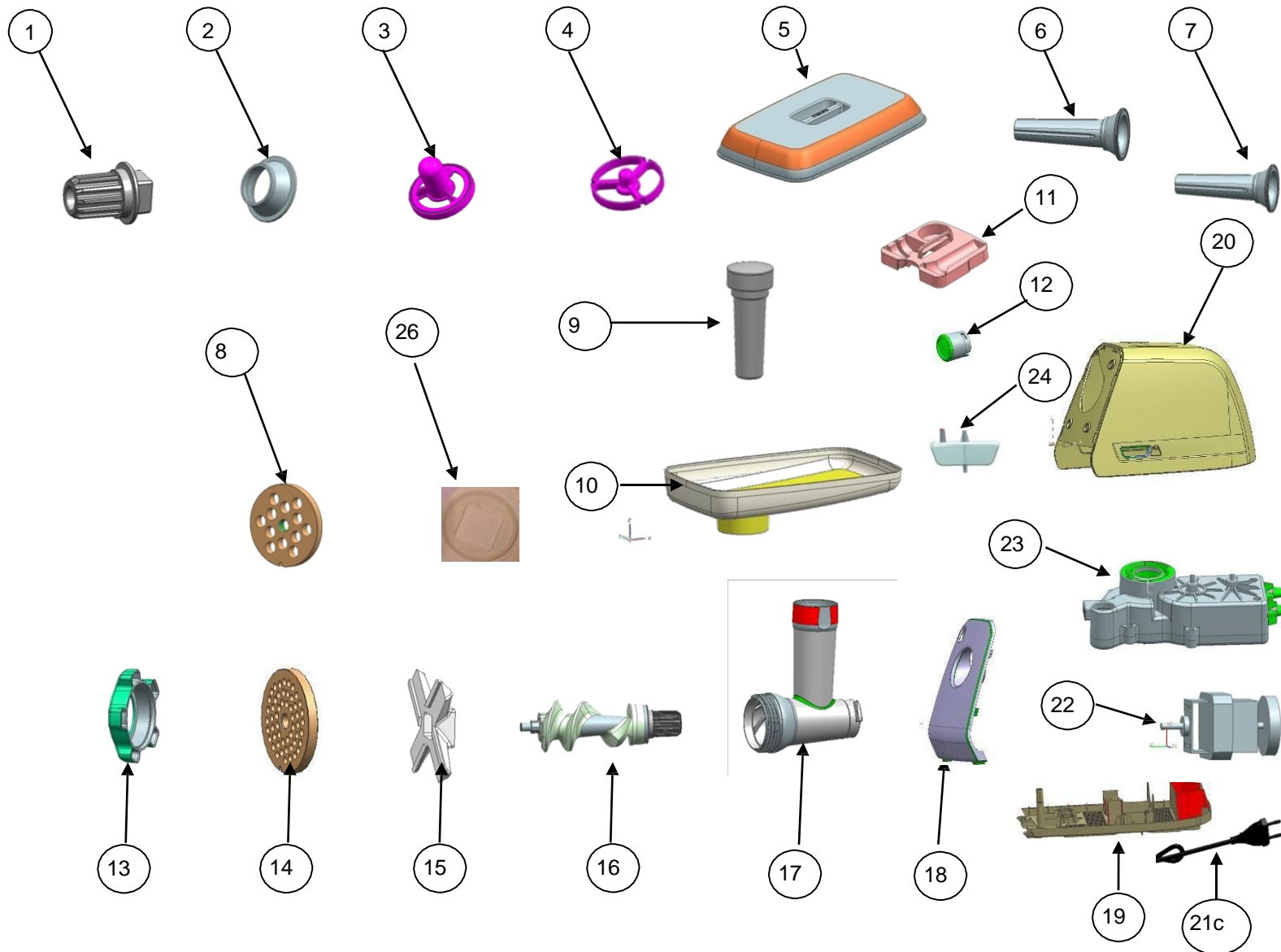


PARTS LIST + EXPLODED VIEW



Pos	Service code	Description	Pos	Service code	Description
1	996510049323	Coupling 1	16	996510049339	Worm shaft
2	996510049324	Kebbe accessory 1	17	996510049341	Grinding chamber
3	996510049325	Kebbe accessory 2	18	996510049399	Front Top cover (deep black)
4	996510049326	Sausage horn spacer	19	996510049397	Bottom cover (deep black)
5	996510049327	Dust cover	20	996510059776	Housing cover (deep black)
6	996510049328	Sausage Horn 12mm	21a	996510058564	VDE power cord plug (2pins)
7	996510049329	Sausage Horn 22mm	21b	996510061081	Power cord UK plug (3pins)
8	996510049331	Cutting disc 8mm	22	996510062811	Power motor UG20R
9	996510049332	Pusher 1	23	996510049404	Gear set
10	996510049405	Food tray	24	996510059769	Switch panel embossment
11	996510049403	Accessories tray	25	996510058565	2 head cleaning tool
12	996510059771	Safety knob button embossment	26	996510062812	PCBA new(no shown)
13	996510049336	Worm Screw	27	996510063351	Rubber ring
14	996510058563	Cutting disc 5mm	39	996510072151	On/Off Switch
15	996510058566	Self correcting cutting knife			

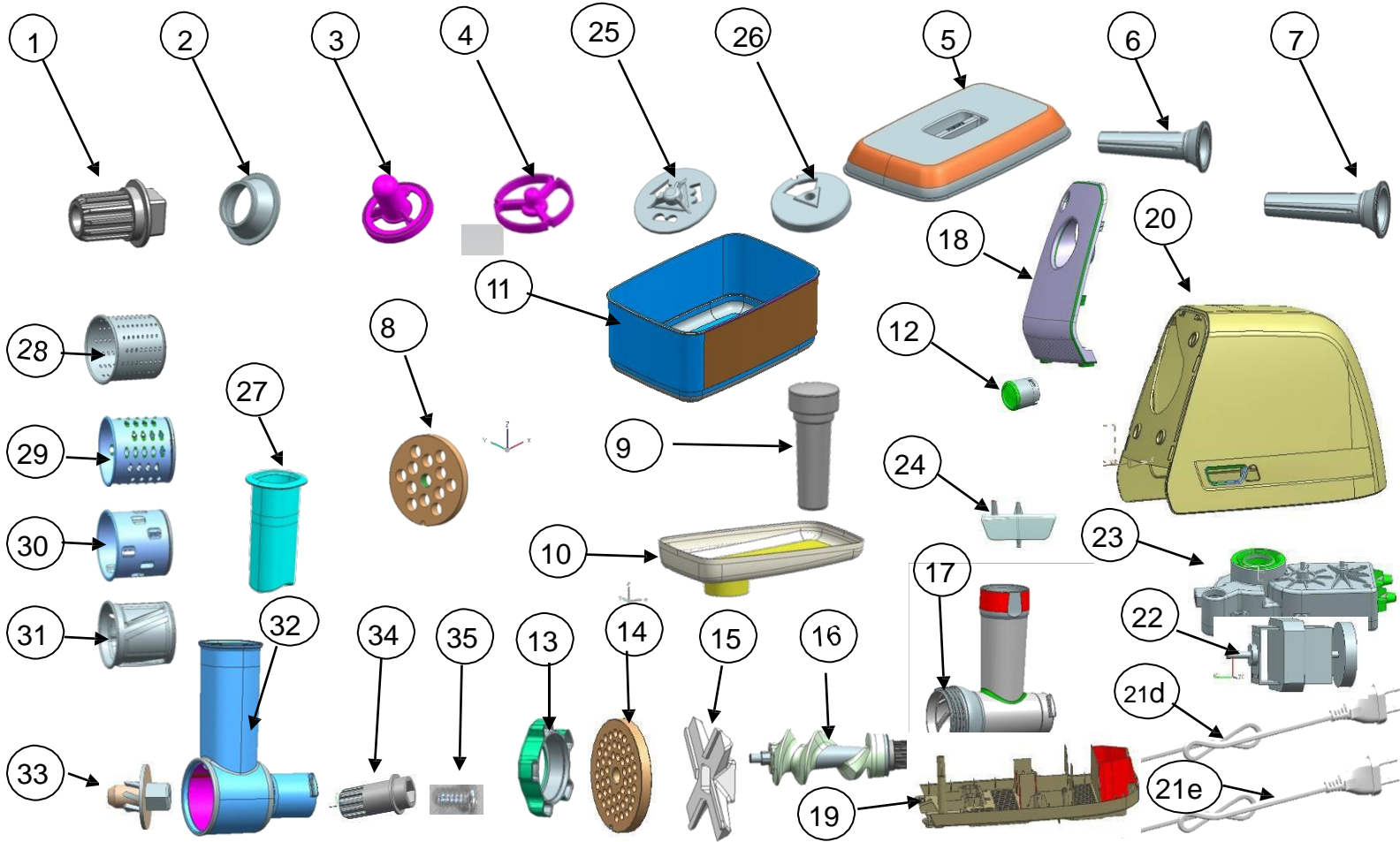
PARTS LIST + EXPLODED VIEW



Pos	Service code	Description
1	996510049323	Coupling 1
2	996510049324	Kebbe accessory 1
3	996510049325	Kebbe accessory 2
4	996510049326	Sausage horn spacer
5	996510049327	Dust cover
6	996510049328	Sausage Horn 12mm
7	996510049329	Sausage Horn 22mm
8	996510049331	Cutting disc 8mm
9	996510049332	Pusher 1
10	996510049333	Food tray
11	996510049403	Accessories tray
12	996510059771	Safety knob button embossment
13	996510049336	Worm Screw
14	996510049337	Cutting disc 4mm

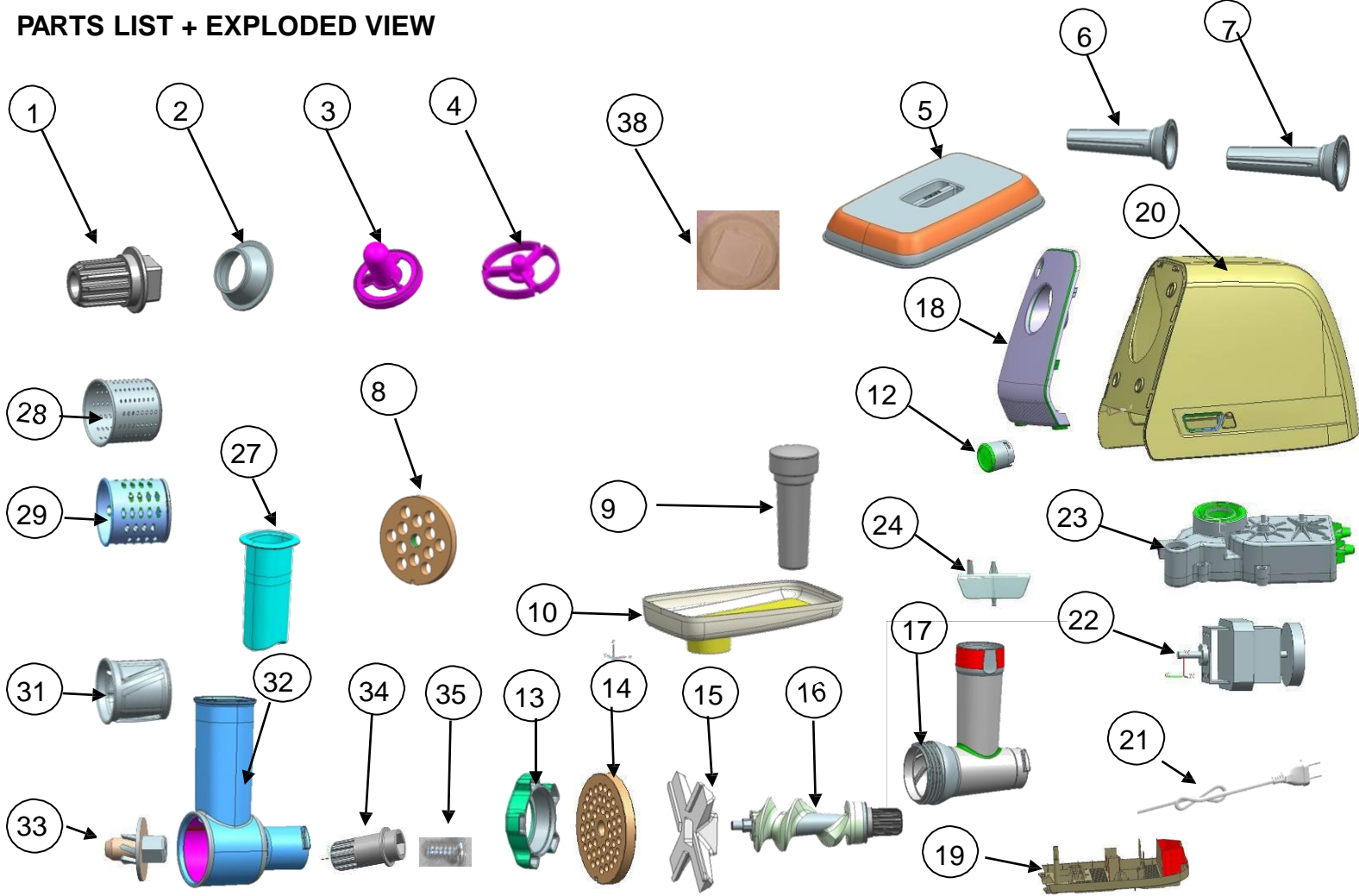
Pos	Service code	Description
15	996510049338	Cutting Knife
16	996510049339	Worm shaft
17	996510049341	Grinding chamber
18	996510049409	Front Top cover (steel silver)
19	996510049397	Bottom cover (deep black)
20	996510059776	Housing cover (deep black)
21c	996510049407	Power cord EU plug (2pins)
22	996510062808	Power motor UG25R
23	996510049348	Gear set
24	996510059769	Switch panel embossment
25	996510062809	PCBA new
26	996510063351	Rubber ring
39	996510072151	On/Off Switch

PARTS LIST + EXPLODED VIEW



pos	Service code	Description
1	996510049323	Coupling 1
2	996510049324	Kebbe accessory 1
3	996510049325	Kebbe accessory 2
4	996510049326	Sausage horn spacer
5	996510049327	Dust cover
6	996510049328	Sausage horn 12 mm
7	996510049329	Sausage horn 22 mm
8	996510049331	Cutting disc 8mm
9	996510049332	Pusher 1
10	996510049333	Food tray
11	996510049334	Storage Box
12	996510059773	Safety knob button embossment
13	996510049336	Worm screw
14	996510058563	Cutting disc 5mm
15	996510058566	Self correcting cutting knife
16	996510049339	Worm shaft
17	996510049341	Grinding chamber 1
18	996510049342	Front cover (oyster metallic)
19	996510059775	Bottom cover (star white)
20	996510059772	Main housing (star white)
21d	996510061079	Power cord UK 1.35 M(3-pins)
21e	996510058567	Power cord EU 1.35 M(2-pins)
22	996510062808	Power Motor UG25R
23	996510049348	Gear set
24	996510059774	Switch panel embossment
25	996510049351	Cookie accessory 2
26	996510049352	Cookie accessory 1
27	996510049353	Pusher 2
28	996510049354	Fine grater drum
29	996510049355	Coarse grater drum
30	996510049356	Ice grater drum
31	996510049357	Shape cutter drum
32	996510049358	Grinding chamber 2
33	996510049359	Output shaft for drum
34	996510049361	Coupling 2
35	996510049352	Screw
36	996510058565	2 head cleaning tool
37	996510062809	PCBA New(no shown)
38	996510063351	Rubber ring
39	996510072151	On/Off Switch

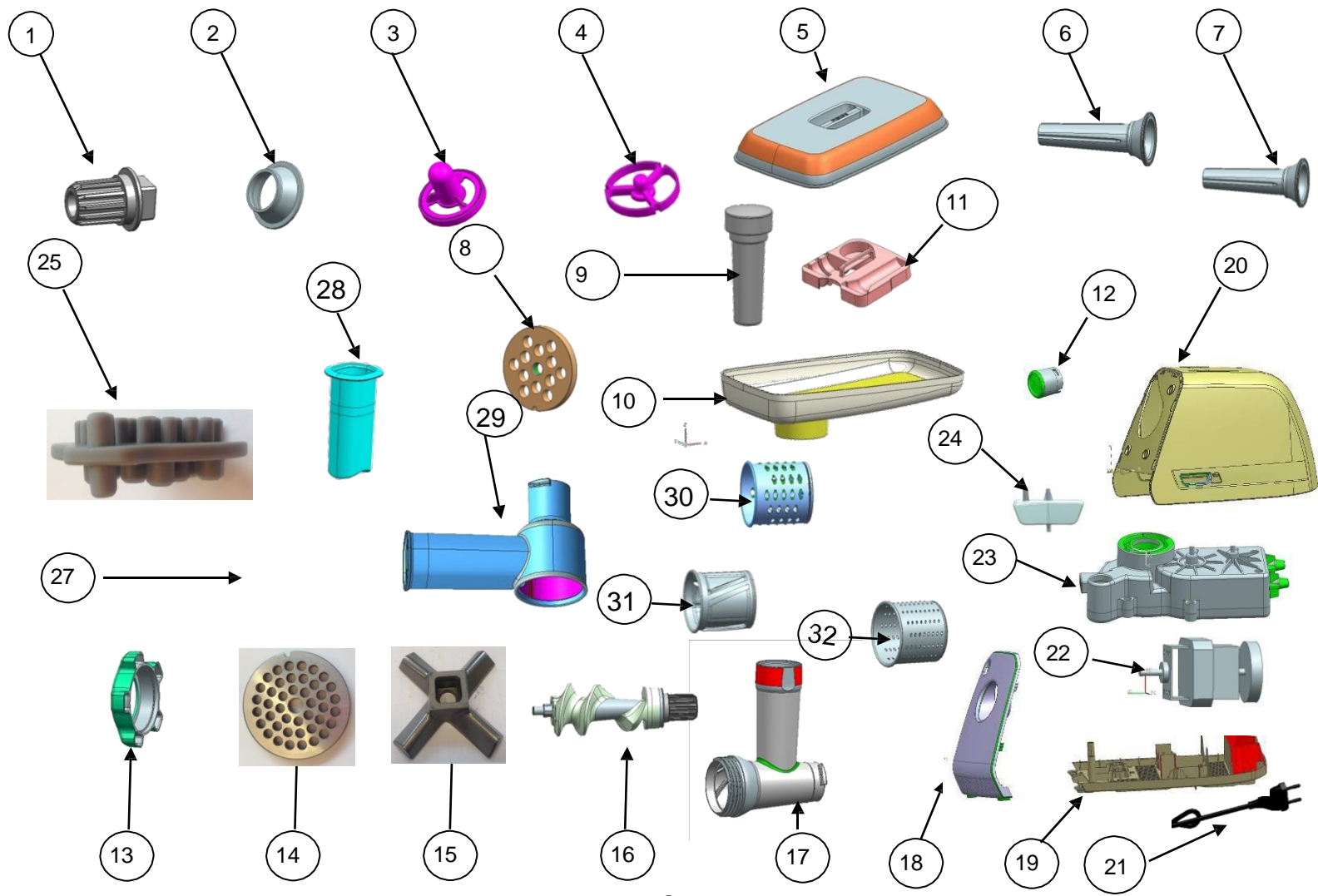
PARTS LIST + EXPLODED VIEW



pos	Service code	Description
1	996510049323	Coupling 1
2	996510049324	Kebbe accessory 1
3	996510049325	Kebbe accessory 2
4	996510049326	Sausage horn spacer
5	996510049327	Dust cover
6	996510049328	Sausage horn 12 mm
7	996510049329	Sausage horn 22 mm
8	996510049331	Cutting disc 8mm
9	996510049332	Pusher 1
10	996510066509	Food tray
12	996510066507	Safety knob button embossment and ribs
13	996510049336	Worm screw
14	996510058563	Cutting disc 5mm
15	996510058566	Self correcting cutting knife
16	996510049339	Worm shaft
17	996510049341	Grinding chamber 1
18	996510066508	Front cover
19	996510059775	Bottom cover (star white)

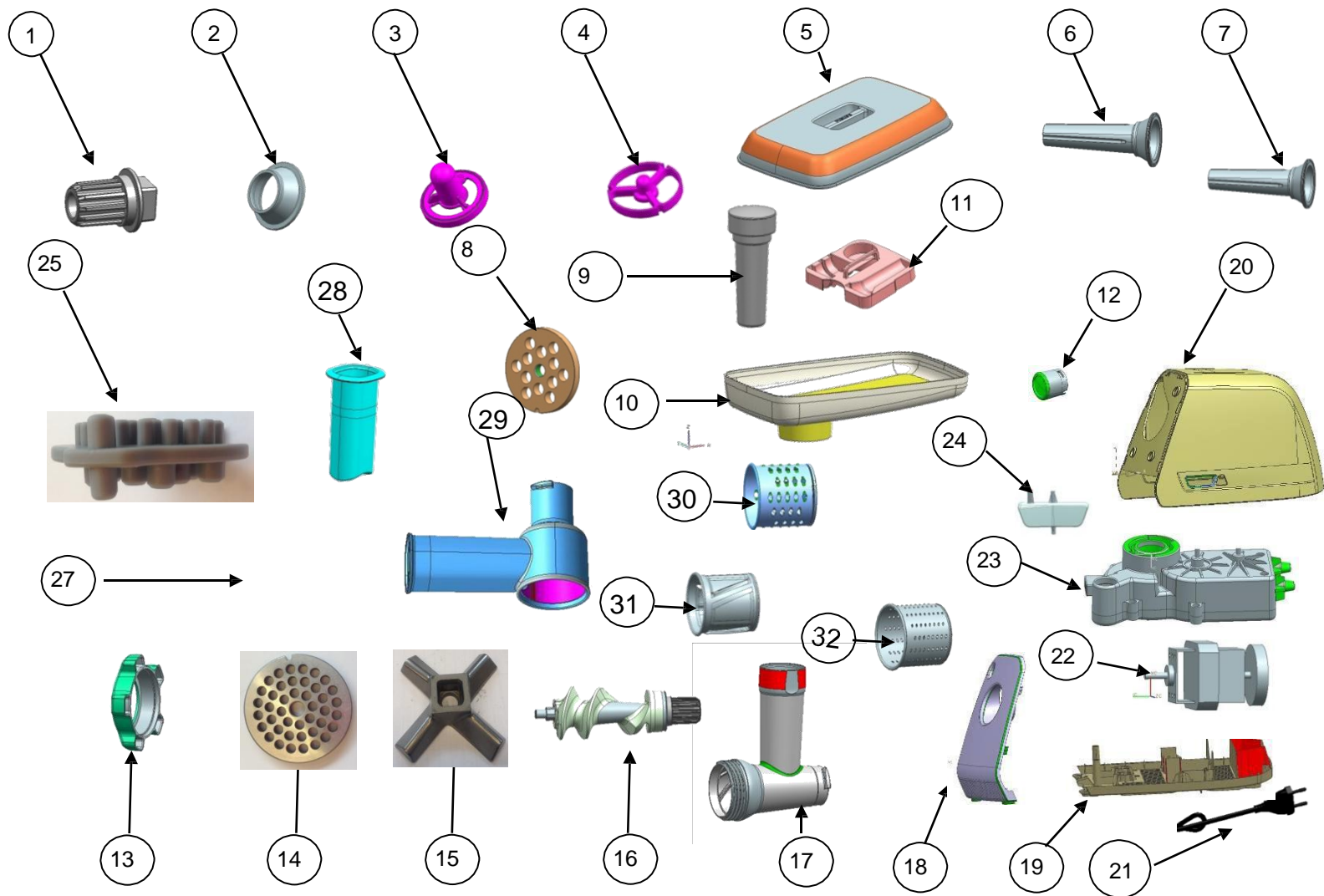
pos	Service code	Description
20	996510059772	Main housing (star white)
21	996510058567	VDE power cord white 1.35M
22	996510062808	Power Motor UG25R
23	996510049348	Gear set
24	996510066506	Switch panel embossment
27	996510049353	Pusher 2
28	996510049354	Fine grater drum
29	996510049355	Coarse grater drum
31	996510049357	Shape cutter drum
32	996510049358	Grinding chamber 2
33	996510049359	Output shaft for drum
34	996510049361	Coupling 2
35	996510049352	Screw
36	996510058565	2 head cleaning tool
37	996510062809	PCBA New(no shown)
38	996510063351	Rubber ring
39	996510072151	On/Off Switch

PARTS LIST + EXPLODED VIEW



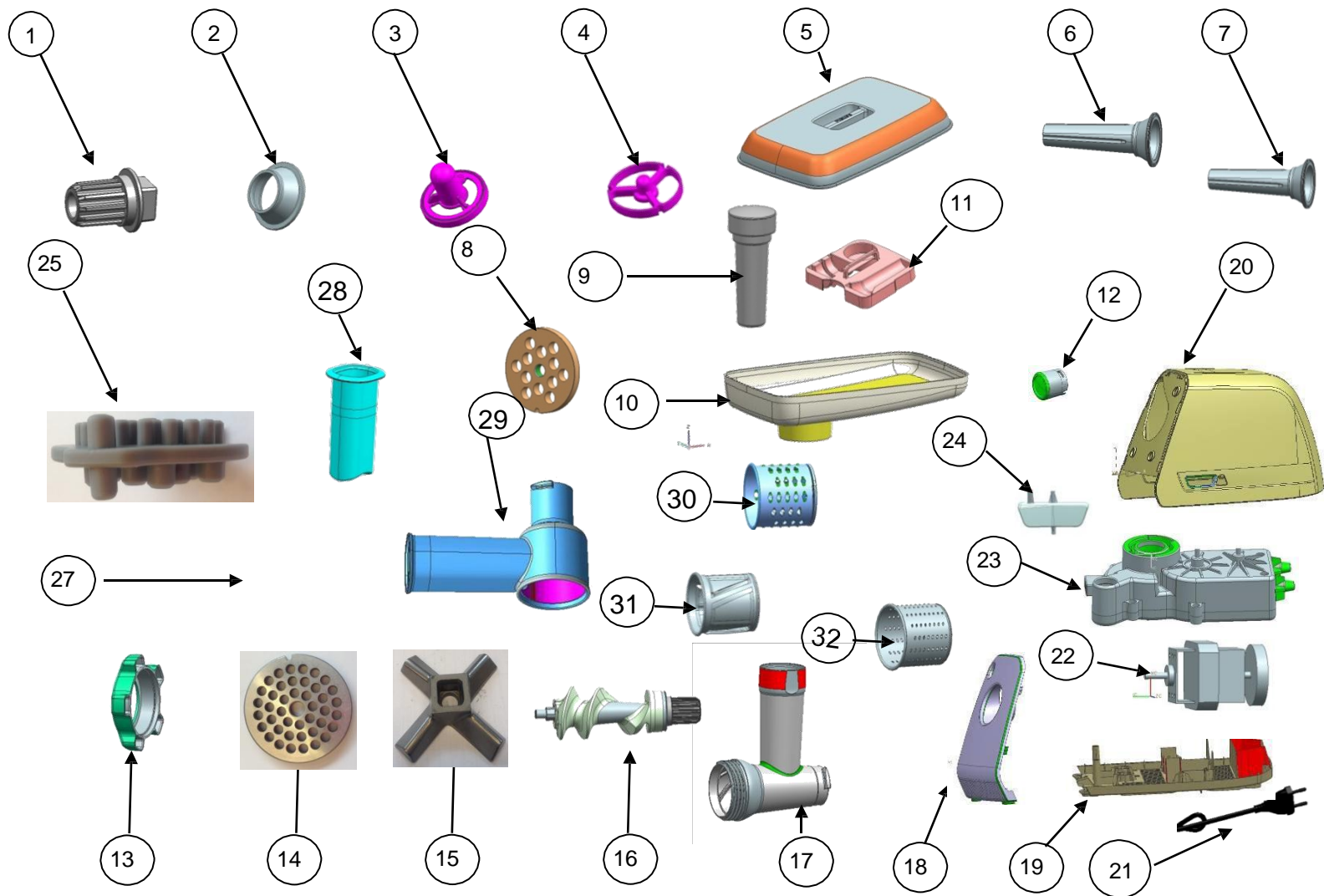
Pos	Service code	Description	Pos	Service code	Description
1	996510049323	Coupling 1	18	996510049399	Front Top cover (deep black)
2	996510049324	Kebbe accessory 1	19	996510049397	Bottom cover (deep black)
3	996510049325	Kebbe accessory 2	20	996510059776	Housing cover (deep black)
4	996510049326	Sausage horn spacer	21	996510058564	VDE power cord plug (2pins)
5	996510049327	Dust cover	22	996510062811	Power motor UG20R
6	996510049328	Sausage Horn12mm	23	996510049404	Gear set
7	996510049329	Sausage Horn22mm	24	996510059769	Switch panel embossment
8	996510049331	Cutting disc 8mm	25	996510058565	2 head cleaning tool
9	996510049332	Pusher 1	26	996510062812	PCBA new(no shown)
10	996510049405	Food tray	27	996510063351	Rubber ring
11	996510049403	Accessories tray	28	996510049353	Pusher 2
12	996510059771	Safety knob button embossment	29	996510049358	Grinding chamber 2
13	996510049336	Worm Screw	30	996510049355	Coarse grater drum
14	996510058563	Cutting disc 5mm	31	996510049357	Shape cutter drum
15	996510058566	Self correcting cutting knife	32	996510049354	Fine grater drum
16	996510049339	Worm shaft	39	996510072151	On/Off Switch
17	996510049341	Grinding chamber			

PARTS LIST + EXPLODED VIEW



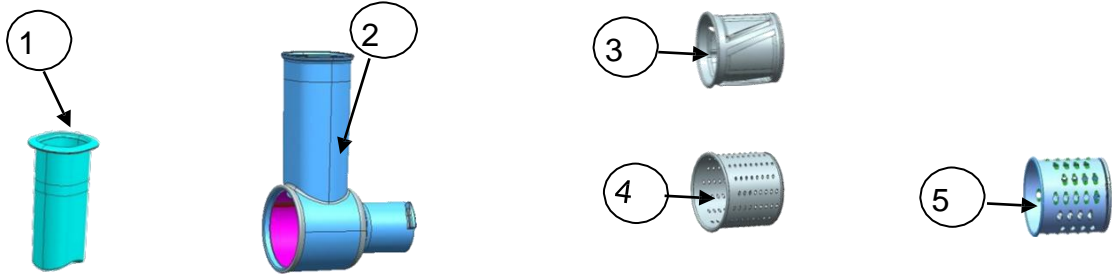
Pos	Service code	Description	Pos	Service code	Description
1	996510073384	PLASTIC COUPLING	36	996510058565	2 HEAD CLEANING TOOL
8	996510055485	DISC 8MM	37	996510062809	PCBA
9	996510073379	PUSHER 1	38	996510063351	RUBBER RING
10	996510073383	FOOD TRAY(ABS)	39	996510072151	ON/OFF SWITCH
12	996510073385	SAFETY KNOB BUTTON EMBOSSMENT	40	996510073382	NEW FRONT PANEL
13	996510072367	WORM SCREW	42	996510073378	RUBBER FOOT
14	996510055487	DISC 5.0MM			
15	996510055504	SELF CORRECTING CUTTING KNIFE			
16	996510055497	WORM SHAFT			
19	996510059775	BOTTOM COVER STAR WHITE			
20	996510073386	MAIN HOUSING (STAR WHITE)			
21	996510058567	VDE POWER CORD WHITE 1.35M			
22	996510062808	POWER MOTOR UG25R			
23	996510049348	GEARSET			
24	996510066506	SWITCH PANEL EMBOSSMENT			

PARTS LIST + EXPLODED VIEW



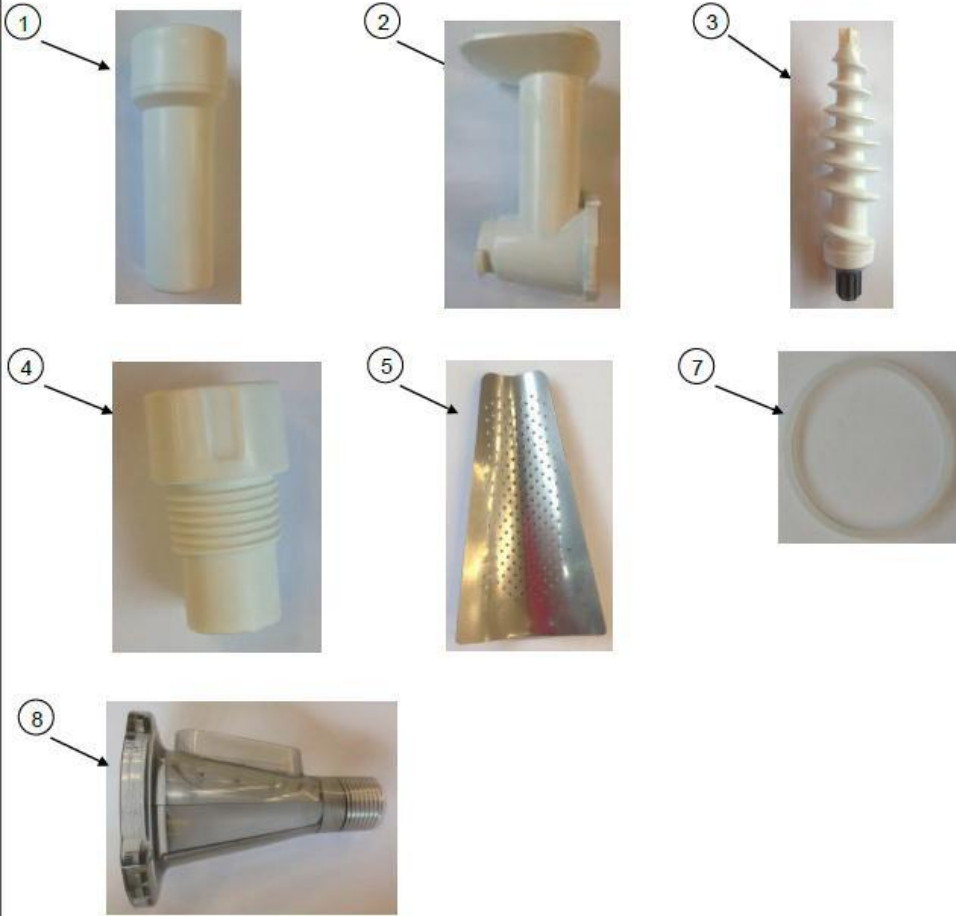
Pos	Service code	Description	Pos	Service code	Description
1	996510073384	PLASTIC COUPLING	27	996510049353	PUSHER 2
4	996510055505	SAUSAGE HORN SPACER	28	996510049354	FINE GRATER DRUM
6	996510055507	SAUSAGE HORN 12MM	29	996510049355	COARSE GRATER DRUM
7	996510055509	SAUSAGE HORN 22MM	30	996510049356	ICE GATER DRUM
8	996510055485	DISC 8MM	31	996510049357	SHAPE CUTTER DRUM
9	996510073379	PUSHER 1	32	996510049358	GRINDING CHAMBER 2
10	996510073383	FOOD TRAY(ABS)	33	996510049359	OUTPUT SHAFT FOR DRUM
12	996510073385	SAFETY KNOB BUTTON EMBOSSMENT	34	996510049361	COUPLING 2
13	996510072367	WORM SCREW	35	996510049362	SCREW
14	996510055487	DISC 5.0MM	36	996510058565	2 HEAD CLEANING TOOL
15	996510055504	SELF CORRECTING CUTTING KNIFE	37	996510062809	PCBA
16	996510055497	WORM SHAFT	38	996510063351	RUBBER RING
19	996510059775	BOTTOM COVER STAR WHITE	39	996510072151	ON/OFF SWITCH
21	996510058567	VDE POWER CORD WHITE 1.35M	40	996510073382	NEW FRONT PANEL
22	996510062808	POWER MOTOR UG25R	41	996510073381	MAIN HOUSING (VAPOR DARK)
23	996510049348	GEARSET	42	996510073378	RUBBER FOOT
24	996510066506	SWITCH PANEL EMBOSSMENT			

PARTS LIST + EXPLODED VIEW



pos	Service code	Description
1	996510049353	Pusher 2
2	996510049358	GRINDING CHAMBER 2
3	996510049357	SHAPE CUTTER DRUM
4	996510049354	FINE GRATER DRUM
5	996510049355	COARSE GRATER DRUM

HR7995 PARTS LIST + EXPLODED VIEW



Pos	Service code	Description
1	996510057678	PUSHER
2	996510059059	HOPPER REAR
3	996510059058	WORM SHAFT+ COUPLING
4	996510057682	ADJUSTING SCREW
5	996510057676	SCREEN
7	996510057675	SEALING RING
8	996510057683	HOPPER FRONT

Change CCL motor to Power motor

Implementation in wk1308 to HR2726/2728 EEU, HR2727 EEU and HR2726/2727/2728 MEA/WEU will use up CCL stock before running change to PM motor.

HR2726

Old motor code : UG-20R-2003 New

motor code : PU9520230-8101

The old and new motors are interchangeable.

HR2727/2728

Old motor code : UG-25R-2001 New

motor code : PU9525230-8101

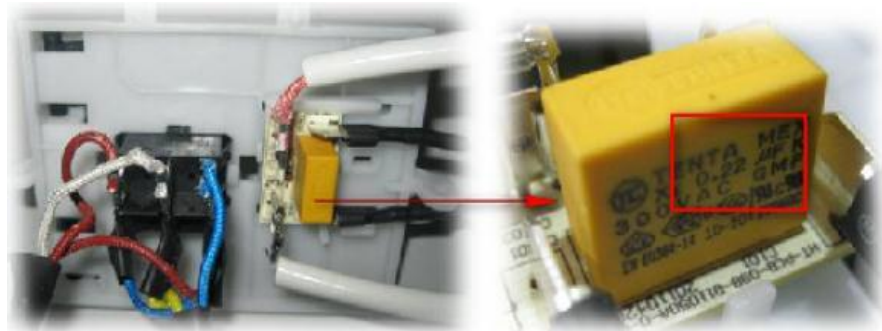
The new motor needs to be fitted with a 0.47uF X1 capacitor (current one is 0.22uF, refer to below photo) in order to fulfill the EMC requirement, so the old and new PCBA are both fit with the old motor, new motor must fit with new PCBA, old PCBA did not make as spare part before, so when repair please take a note.

Old motor 12NC : 996510049347

New motor 12NC : 996510062808

New PCBA 12NC : 996510062809

Old PCBA photo:



Remark:

Add On/Off Switch for HR2726/HR2727/HR2728/HR2729/HR2526



Revision list

HR2726/HR2727/HR2728/HR2729/2526

Version A : initial release.

Version B : update spare part of position 14,15 & 21a, change disc 4mm to 5mm, change cutting knife to self correcting cutting knife, increase the length of the power cord EU, add position 25 two head cleaning tool for HR2726.

Version C : correct the 12NC wrong of HR2727 pos 23 from 996510049448 to 996510049348.

Version D : update pos 12,19,20 & 24 12NC for cost down, they are interchangeable with the formerly ones, pos 12, 24 changes will implement on wk1247, the other two . will implement on wk1246.

Version E : Update power cord(increase length) for HR2726/2728 and change disc 4mm to 5mm, cutting knife to self correcting cutting knife, also add 2 head cleaning tool for HR2728.

Version F : change CCL motor to Power motor for HR2726/2728 and add new spare part PCBA, the old and new PCBA are both fit with the old motor, new motor must fit with new PCBA, implement date is wk1308.

Version G : change CCL motor to Power motor on all HR2726/2727/2728 versions, add new PCBA and rubber ring and update some product information.

Version H : add accessory model HR7996.

Version I : add HR2526.

Version J : add new version HR2729.

Version K: add accessory model HR7995---wk1451

Version L : add spare part On/Off Switch (12NC#996510072151) for HR2726,2727,2728,2729,2526. --- wk1503

Version M add two new models HR2741 HR2742 into SM. -----1521