



Philips Consumer Lifestyle

Service Manual

PRODUCT INFORMATION

- The Foodprocessor is equipped with mechanical and thermal safety switches.

Materials used:

- Bowl, bowl lid, JE lid : SAN
blender jar & safety cover,
- Housing, screw cap, blender lid, : PP
pusher, inlay bowl handle
- juice extractor (sieve, pusher), : PP
citrus press (sieve & cone)
- Panel foil : Santoprene
- Kneading accessory : PP / 30% chalk
- Balloon beater : POM
- Insert holder, handgrip blender jar : ABS
- Adjustable slicing disc : POM, ABS,
stainless steel

Colours:

- White with Vapor Dusk accents, clear transparent bowl & jar

Safety:

- Automatically resettable : protects motor against thermal cut out
overheating
- Built – in safety lock : detects wheter lid & bowl are assembled
- Motor brake system : stops the appliance within 1.5 seconds
- This product meets the requirements regarding interference suppression on radio and TV.
- After the product has been repaired, it should function properly and has to meet the safety requirements as officially laid down at this moment.

TECHNICAL INFORMATION

- Motor : universal, radio / TV interference suppressed
- Power consumption : 800 Watt max.
- Voltage & frequency : 230 V, 50 Hz
- Cordset : 100 cm, double insulated with moulded on plug
- Speed setting : Smart Process Control
- Bowl capacity : 2.5 L dry ingredients, 1.7 L liquids
- Blender capacity : total jar capacity 2.0 L,
1.5 L effective
- Speeds unloaded : blender drive shaft 19500 rpm (max)
accessories drive shaft from 660 rpm to 2150 rpm, depends on application
- Weight in fancy box : 6.200 g
- Dimensions : 406 mm x 281 mm x 521 mm
fancy box (l x w x h)

- The blender coupling on the motor shaft has been provided with a customary left-handed thread.
The drive coupling (item 10) can be detached by means of a hammer and a screwdriver. Strike the screwdriver with a short sharp blow and remove the drive coupling, or block the acc. drive wheel (item 17) and thereby the rotor shaft, by sticking a pin through the hole (5 mm dia. – marked with an arrow) in the bottom plate.
- The assembly of the accessories depends on the national version.
- For specific versions, the component configuration may differ from the one shown on the exploded view. However, the actual components can be distinguished by their code numbers.
- Make sure that all functions, including the safety devices, are working correctly after you have completed the repair.
- To check the processes of smart control, please look at the described functions on the next page.

Automatic resettable cut-out (part of item 11)

To prevent damage due to overheating, the appliance has been equipped with an automatic cut-out system. This system will automatically cut off the power supply when the appliance overheats.

If the appliance suddenly stops running:

- Unplug the appliance
- Switch off the appliance
- Let the appliance cool down for 15 minutes
- Plug the appliance in again
- Switch the appliance on again

Safety lock (item 7)

Place the lid on the bowl in the right position. The appliance will only function if the line on the appliance is directly opposite the mark on the lid of the food processor bowl and the same holds for the other accessoires. The built-in safety lock will now be deblocked and you can turn the appliance on. Note that if both the blender jar and the bowl have been correctly mounted, only the blender will function.

Important:

If the appliance is used without the blender jar, the appliance will not function, when the blender coupling (item 10) has not been protected by the blender cover (item 1).

Note:

The blender cover can only be removed, when the bowl including the bowl lid is not mounted on the foodprocessor.

How to set the belt tension:

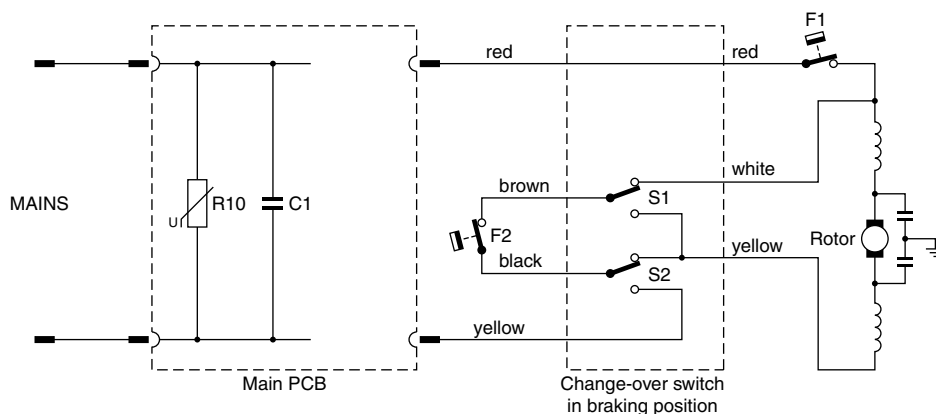
- Step 1: Give 30 N pretension force on the adjusting plate to minimise the distances between the belt and the belt wheels
- Step 2: Reduce the tension force from 30 N down to 10 N which is the required belt drive force for the appliance.
- Step 3: Fix the adjusting screw on the adjusting plate when the tension force reaches the value of 10 N (after coming down from 30 N!)

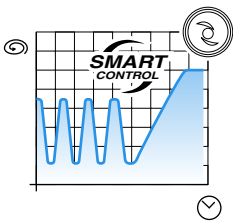
DISASSEMBLY AND RE-ASSEMBLY ADVISE

- No specific issues

OPTIONAL (accessories)

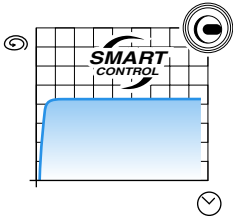
- No specific issues





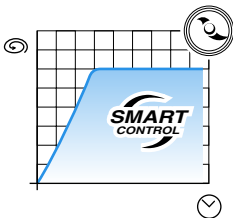
Chopping process

The chopping process starts with four pulses. After that, the food processor will pick up speed until it runs at maximum power. He will continue to run at this speed until the STOP button is pressed. The speed can be decreased in three steps by pressing the - button.



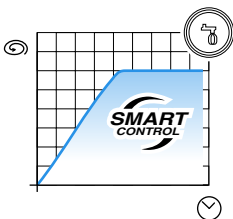
Shredding and slicing process

When the shredding and slicing button is pressed, the food processor will start to run at a constant speed to produce the best end results with the adjustable slicing disc or the inserts. The food processor will continue to run at this constant speed until the STOP button is pressed. The speed can be increased or decreased in three steps by pressing the + button or - button.



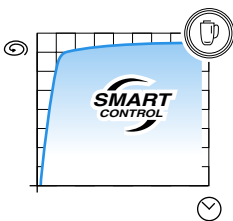
Kneading process

The kneading process starts with a Soft Start and then increases to a powerful kneading speed to achieve a good end result in a short time. The food processor will continue to run at this speed until the STOP button is pressed. The speed can be decreased in three steps by pressing the - button.



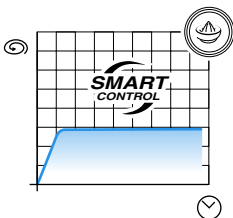
Whisking process

When the whisking process is selected the appliance starts with a 10 second Soft Start. The speed will gradually increase until the maximum working speed for perfectly whisked egg whites or whipped cream has been reached. The speed is maintained until the STOP button is pressed. The speed can be decreased in three steps by pressing the - button.



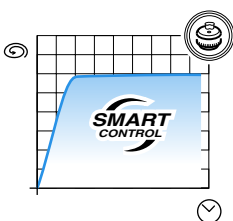
Blending process

To prevent splashing, the blending process features a Soft Start. After a few seconds the speed gradually increases to maximum speed to produce a perfectly smooth result. The blender will continue to run at this speed until the STOP button is pressed. During the blending process the speed can be decreased in three steps by pressing the -button.



Citrus pressing process

The citrus pressing process features a Soft Start, which means the cone starts rotating at a low speed guaranteeing a pleasant sensation and a perfect result. The food processor will continue to run at this speed until the STOP button is pressed. The speed can be decreased in three steps by pressing the -button.



Juice extracting process

The juice extracting process has a Soft Start, which means that the juice extractor will start to run at a low speed and gradually increase to maximum speed to guarantee the highest possible, juice output. The food processor will continue to run at this speed until the STOP button is pressed. The speed can be decreased in three steps by pressing the -button.

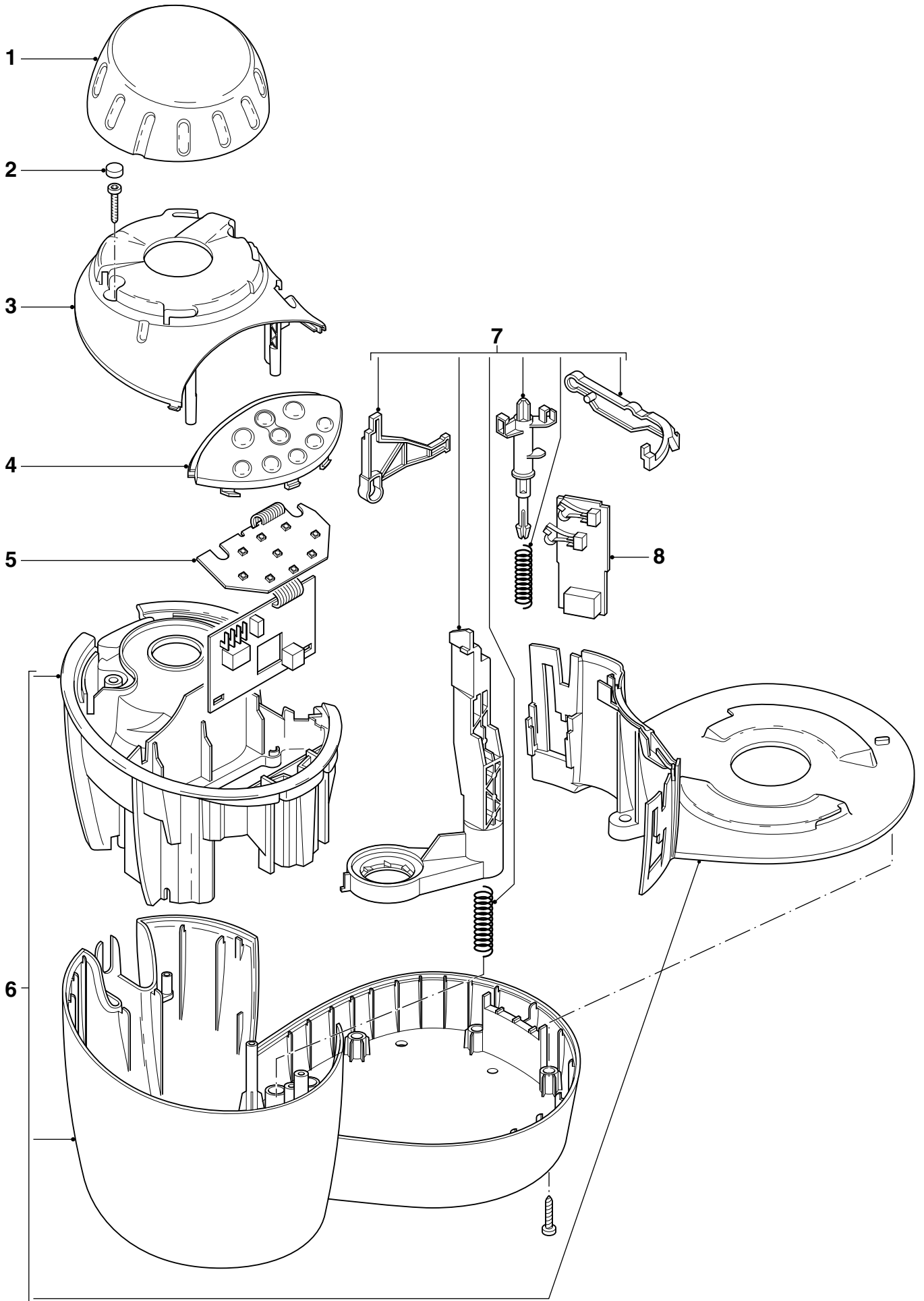
Pos	Service code	Description
1	4203 065 63470	Blender cover
2	4203 065 63620	Screw cap
3	4203 065 63950	Top housing printed
4	4203 065 63910	Panelfoil assy
5	4203 065 63890	PCB controll assy
6	4203 065 63490	Housing parts
7	4203 065 63580	Safety switch lever
8	4203 065 63960	PCB brake
9	4203 035 53570	Motor / Coupling – Assy
12	4203 065 63590	Motor coupling assy
13	4203 065 63600	Mounting plate
14	4203 065 63540	Adjusting piece
15	4203 065 60310	Motor screw
16	4203 065 65460	Tooth belt
17	4203 065 63560	Belt wheel
18	4203 065 63610	Single speed gear
19	4203 065 65340	Cordset EURO
	4203 065 64000	Cordset UK
	4203 065 64020	Cordset SWISS

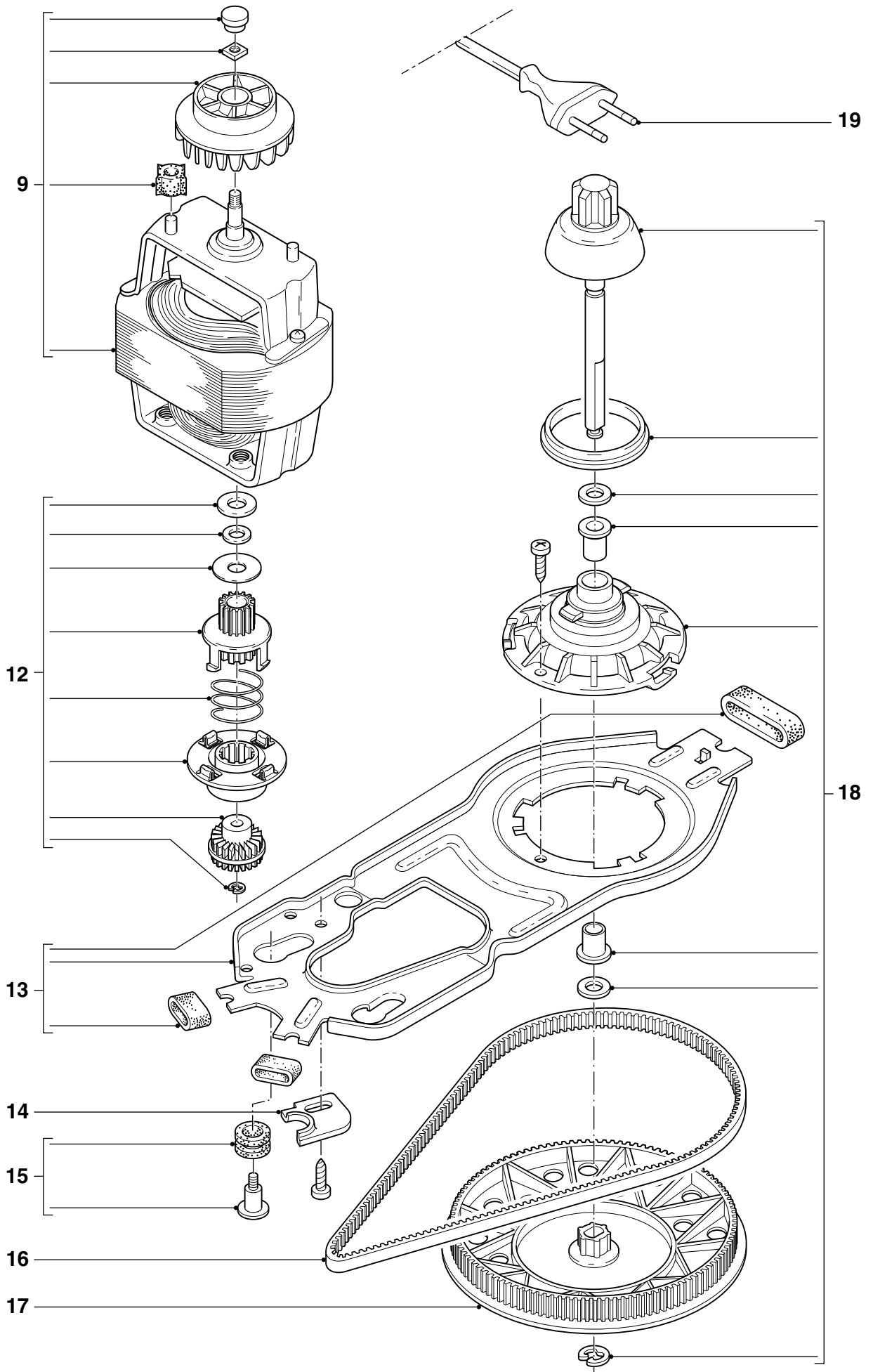
Pos	Service code	Description
30	4203 065 63880	Press cone
31	4203 065 63870	Sieve
32	4203 065 63800	Pusher closed bowl
33	4203 065 63760	Bowl lid
34	4203 065 63770	Lid bearing
35	4203 065 63780	Closed bowl
39	4203 065 61570	Insert granulating
40	4203 065 61550	Insert shredding fine
42	4203 065 61560	Insert shredding medium
43	4203 065 62310	Insert shredding coarse
44	4203 065 61520	Insert holder
45	4203 065 63670	Adjustable slicing disc
46	4203 065 63970	Plastic kneader
47	4203 065 63690	Metal knife
48	4203 065 63660	Emulsifying disc
49	4203 065 63680	Toolholder
50	4203 065 61350	Ballon beater assy
54	4203 035 90560	Blender jar Assy
60	4203 065 63820	Juice extractor pusher
61	4203 065 63830	Juice extractor lid
62	4203 065 63840	Juice extractor lid bearing
63	4203 065 65760	Juice extractor accessory

Caused by Callrate at the Juice extractor accessory due to the possibility, that the consumer was able to assemble it in a wrong way, some modifications have been done. The concerned parts are the shredding piece and the sieve, which are now combined to an assy (Pos. 63). This was necessary, due to the non-interchangeability between the old and new parts.

EXPLODED VIEW

HR7754/01





EXPLODED VIEW

HR7754/01

