

Service
Service
Service

HR7776/RI7776

HR7778/RI7778

HR7777



Philips Consumer Life Style

Service Manual

TECHNICAL INFORMATION

- Power : 1300 W
- Voltage / frequency : 220 - 240V / 50 - 60 Hz
- Bowl capacity dry : 3.4 L
- Bowl capacity dough : 1700 g
- Bowl capacity flour : 1000 g
- Bowl volume capacity liquid : 2 L
- Safety : Lid & bowl detection, mechanical 1.5 sec brake
- Cord length : 1.2 m
- Color : Ink black for HR7776;HR7777;RI7776
Metal/black for HR7778;RI7778;HR7777/00

HR7778/RI7778/HR7777/HR7776/RI7776 dimensions(L X W X H)

- Product : 265 X 254 X 191 mm
- Product with bowl : 289 X 254 X 436 mm
- Product with blender : 265 X 254 X 440 mm

Materials:

- Housing : ABS
- Speed knob : ABS
- Pusher : ABS
- Bowl including lid : SAN
- Citrus press : PP
- Discs, chopping knife : Stainless steel
- Kneading tool : PP and metal
- Knife bolder, balloon beater :POM

Avance Food Processor Accessory

- There are some models could be used as avance food processor accessory, HR7986/HR7987/HR7989/HR7993/HR7994/RI7986/RI7987/RI7994

ASSEMBLY & DISASSEMBLY ADVICE

- No specific issues

REPAIR INSTRUCTION

- No specific issues

OPTIONAL (accessories)

- No specific issues

SAFETY

- This product meets the requirements regarding interference suppression on radio and TV.
- After the product has been repaired, it should function properly and has to meet the safety requirements as officially laid down at this moment.

Partslists

HR7776/HR7777/HR7778/RI7776/RI7778

Pos	12NC	Description	Remark
1	9965 100 56756	ICE KNOB (BLACK)	For HR7776/RI7776/HR7777
	9965 100 56814	ICE KNOB (SMOKE CHROME)	For HR7778/RI7778
2	9965 100 56731	KNEADING KNOB (BLACK)	For HR7776/RI7776/HR7777
	9965 100 56809	KNEADING KNOB (SMOKE CHROME)	For HR7778/RI7778
3	9965 100 56758	WHIPPING KNOB (BLACK)	For HR7776/RI7776/HR7777
	9965 100 56806	WHIPPING KNOB (SMOKE CHROME)	For HR7778/RI7778
4	9965 100 56748	MOTOR BOWL	For all Avance Food Processor
5	9965 100 56739	TOP HOUSING	For all Avance Food Processor
6	9965 100 56757	HOUSING (BLACK)	For HR7776/HR7777 (not include HR7777/00)
	9965 100 56819	HOUSING (BLACK,WALITA)	For RI7776 only
	9965 100 56823	HOUSING (METAL BODY)	For HR7778 and HR7777/00 only
	9965 100 56817	HOUSING (METAL BODY,WALITA)	For RI7778 only
7	9965 100 56746	RUBBER FEET	For all Avance Food Processor
8	9965 100 56734	SWITCH KNOB	For all Avance Food Processor
9	9965 100 73425	PCBA (MICROSWITCH+LEADWIRE) HV	For all HV Avance Food Processor
	9965 100 73427	PCBA (MICROSWITCH+LEADWIRE) Brazil LV	For RI7776/91 & RI7778/01
	9965 100 73426	PCBA (MICROSWITCH+LEADWIRE) Brazil HV	For RI7776/90 & RI7778/00
10	9965 100 56753	HOLDER SAFETY SWITCH + LEVER (JAR)	For HR7776/RI7776/HR7777
11	9965 100 56738	HOLDER SAFETY SWITCH + LEVER (JUICER)	For HR7776/RI7776/HR7777
12	9965 100 56776	CORD STORAGE BOX	For HR7776/RI7776/HR7777
13	9965 100 56755	DRIVING COUPLING ASSY	For HR7776/RI7776/HR7777
14	9965 100 56747	MOTOR ASSY	For all Avance Food Processor except RI7776/91 & RI7778/01
	9965 100 56805	MOTOR ASSY(LV)	For RI7776/91 & RI7778/01
15	9965 100 56736	POWER CORD WITH COVER + FERRITE CORE	For HR7776/90 & HR7777/HR7778/00
	9965 100 56767	POWER CORD 3PIN	For HR7776/91 & HR7778/01
	9965 100 56811	POWER CORD WITH COVER + FERRITE CORE	For RI7776/RI7778
	9965 100 56822	POWER CORD AUS VERSION	For HR7778/03
16	9965 100 56745	BOTTOM	For all Avance Food Processor
17	9965 100 56815	JUICER LID	For HR7778/RI7778/HR7986/RI7986
18	9965 100 56808	PUSHER	For HR7778/RI7778/HR7986/RI7986
19	9965 100 56812	SIEVE BLADE DISC + FILTER MESH ASSY	For HR7778/RI7778/HR7986/RI7986
20	9965 100 56816	JUICER BOWL	For HR7778/RI7778/HR7986/RI7986
21	9965 100 56818	JUICER BASE + LOCK ARM	For HR7778/RI7778/HR7986/RI7986
22	996510073288	BRUSH NEW	For HR7778/RI7778
23	9965 100 56803	MEASURING CUP (JUICER BOWL)	For HR7778/RI7778
24	9965 100 56762	BOWL PUSHER	For all Avance Food Processor
25	9965 100 56732	BOWL LID	For all Avance Food Processor
26	9965 100 56761	DRIVER	For all Avance Food Processor

Partslists

HR7776/HR7777/HR7778/RI7776/RI7778

Pos	12NC	Description	Remark
27	996510070034	BOWL ASSY	For all Avance Food Processor
28	9965 100 56735	CHOPPING KNIFE	For all Avance Food Processor
29	9965 100 56772	REAMER HEAD	For all Avance Food Processor
30	9965 100 68483	REAMER BOWL	For all Avance Food Processor
33	9965 100 56766	KNEADING HOOK	For all Avance Food Processor
34	9965 100 56733	GRANULATING DISC	For all Avance Food Processor
35	9965 100 56804	JULIENNE DISC	For HR7778/RI7778/HR7987/RI7987
36	9965 100 56821	FRENCH FRIES DISC (9 X 9MM)	HR7778/HR7987/RI7987
37	9965 100 56775	SHREDDING DISC	For all Avance Food Processor and HR7987/RI7987
38	9965 100 56765	ADJUSTABLE SLICING DISC	For all Avance Food Processor
39	9965 100 69212	BALLOON BEATER ASSY	For all Avance Food Processor
41	9965 100 56769	SPATULA	For all Avance Food Processor
42	9965 100 56742	MEASURING CUP (JAR)	For all Avance Food Processor
43	9965 100 56751	JAR LID	For all Avance Food Processor
44	9965 100 56768	BLENDER JAR	For all Avance Food Processor
45	9965 100 56737	KNIFE UNIT	For all Avance Food Processor and HR7989
46	9965 000 23151	SEALING RING - BLENDER KNIFE	For all Avance Food Processor
47	9965 100 56749	MINI JUCIER PUSHER	For HR7777
48	9965 100 56764	MINI JUCIER LID	For HR7777
49	9965 100 56743	JUCIER CONTAINER	For HR7777
50	9965 100 56759	JUCIER FILTER	For HR7777
51	9965 100 56771	SAFETY SWITCH + SWITCH HOLDER (JAR)	For all Avance Food Processor
52	9965 100 56744	SAFETY SWITCH + SWITCH HOLDER (JUICER)	For all Avance Food Processor For HR7989, HR7776 MEA & Dubai, HR7778 MEA & Dubai
53	9965 100 56882	JAR MILL ASSY	For HR7989, HR7776 MEA & Dubai, HR7778 MEA & Dubai
54	9965 100 56876	MINI BOWL LID	For HR7994/RI7994
55	9965 100 56877	BLADE + BLADE HOLDER	For HR7994/RI7994
56	9965 100 56878	MINI BOWL	For HR7994/RI7994
57	9965 100 57063	STORAGE BOX	For HR7993/HR7778
58	9965 100 57062	STORAGE BOX LID	For HR7993/HR7778
59	996510071101	MICROSWITCH+LEADWIRE	For RI7778/01 RI7776/91

Main unit view

HR7776/HR7777/HR7778/RI7776/RI7778

1



2



3



4



5



6



7



8



9



10



11



12



13



14



15



Main unit view

HR7776/HR7777/HR7778/RI7776/RI7778

16



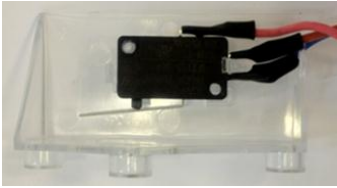
19



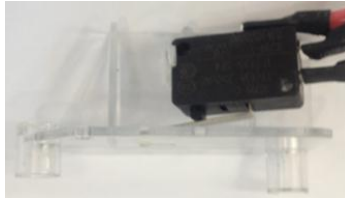
26



51



52



Accessorry view

HR7776/HR7777/HR7778/RI7776/RI7778

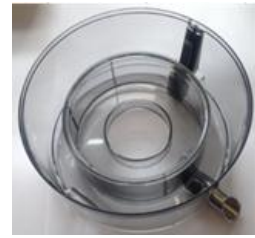
17



18



20



21



22



Old Brush



New Brush

23



24



25



27



28



29



30



33



34



35



36



37



38



39



41



42



43



44



45



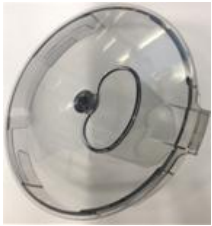
46



47



48



49



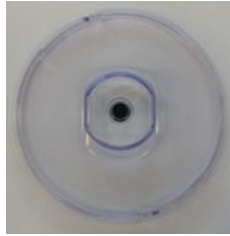
50



53



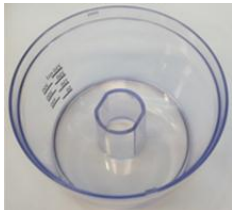
54



55



56



57



58



Remark**HR7776/HR7777/HR7778/RI7776/RI7778**

For these two models: RI7776/91(886777691240), RI7778/01(886777801240), here comes an important clarification, please note.

The spare part—PCBA (996510069353) should match up with the spare part MICROSWITCH+LEADWIRE (996510071101) when doing repair on the products with below three POs & PCBA Date Code.

Philips PO.	PCBA Date Code
APC-FLE070039	S140530
APC-FLE070040	S140530
APC-BRA070519	S140502

The 12NC for PCBA (MICROSWITCH+LEADWIRE): 996510071066---can apply for all the products of Brazil LV without product date code limitation.

Revision list

HR7776/HR7777/HR7778/RI7776/RI7778

1. Version A : Initial release
2. Version B : Add HR7986/RI7986/RI7987/RI7994 accessory models
3. Version C : Update product dimension information on first page.
4. Version D : Add HR7777/00 – change to metal housing, construction and other accessories are same as other HR7777 versions.
5. Version E : Update reamer bowl which is position 30.
6. Version F : make position 39 & 40 as one spare part balloon beater assy, the old stock need scrap.
7. Version G : change PCBA for all versions(remove out the diode from the old PCBA)
8. Version H : change position #27 bowl nuts.
9. Version I : combine BOWL, BOWL HANDLE and BOWL SAFETY LEVER as one spare part.---WK1409
10. Version J : change all high version PCBA (except Brazil) from 996510069354 to 996510071054 for quality improvement. Brazil LV & HV will be changed to new 12NC later---WK1430.
11. Version K : Change Brazil HV & LV PCBA from 996510069354 to 996510071065(HV), 996510069353 to 996510071066(LV) for quality improvement---WK1431.
12. Version L : add MICROSWITCH+LEADWIRE 12NC (996510071101) into part list, which should be used together with PCBA (996510069353) when do repair for special three PO. Add detail repairing instruction into SM.---WK1433
13. Version M : change power from 1000w to 1300w. WK1439
14. Version N : change the brush of position 22 from 12NC#996510056807 to new brush 12NC#996510073288 for HR7778/RI7778 base on CP1355.It's running change and implementation date is WK1521. --- WK1519
15. Version O : Change PCBA as below for quality improvement. (This is short term solution. The long term solution will be provided later once it's available.).
 - PCBA (MICROSWITCH+LEADWIRE) HV From 996510071054 to 996510073425.
 - PCBA (MICROSWITCH+LEADWIRE) BR HV From 996510071065 to 996510073426.
 - PCBA (MICROSWITCH+LEADWIRE) BR LV From 996510071066 to 996510073427.