



Philips Consumer Life Style

Service Manual

TECHNICAL INFORMATION

- Power : 1300 W(1000W for HR7778/02 Mexico)
- Voltage / frequency : 220 - 240V / 50 - 60 Hz
- Bowl capacity dry : 3.4 L
- Bowl capacity dough : 1700 g
- Bowl capacity flour : 1000 g
- Bowl volume capacity liquid : 2 L
- Safety : Lid & bowl detection, mechanical 1.5 sec brake
- Cord length : 1.2 m
- Color : Ink black for HR7776;HR7777;RI7776
Metal/black for HR7778;RI7778;HR7777/00

HR7778/RI7778/HR7777/HR7776/RI7776 dimensions(L X W X H)

- Product : 265 X 254 X 191 mm
- Product with bowl : 289 X 254 X 436 mm
- Product with blender : 265 X 254 X 440 mm

Materials:

- Housing : ABS
- Speed knob : ABS
- Pusher : ABS
- Bowl including lid : SAN
- Citrus press : PP
- Discs, chopping knife : Stainless steel
- Kneading tool : PP and metal
- Knife bolder, balloon beater :POM

Avance Food Processor Accessory

- There are some models could be used as avance food processor accessory, HR7986/HR7987/HR7989/HR7993/HR7994/RI7986/RI7987/RI7994

ASSEMBLY & DISASSEMBLY ADVICE

- No specific issues

REPAIR INSTRUCTION

- No specific issues

OPTIONAL (accessories)

- No specific issues

SAFETY

- This product meets the requirements regarding interference suppression on radio and TV.
- After the product has been repaired, it should function properly and has to meet the safety requirements as officially laid down at this moment.

Partslists

HR7776/HR7777/HR7778/RI7776/RI7778

Pos	12NC	Description	Remark
1	996510056756	ICE KNOB (BLACK)	For HR7776/RI7776/HR7777
	996510056814	ICE KNOB (SMOKE CHROME)	For HR7778/RI7778
2	996510056731	KNEADING KNOB (BLACK)	For HR7776/RI7776/HR7777
	996510056809	KNEADING KNOB (SMOKE CHROME)	For HR7778/RI7778
3	996510056758	WHIPPING KNOB (BLACK)	For HR7776/RI7776/HR7777
	996510056806	WHIPPING KNOB (SMOKE CHROME)	For HR7778/RI7778
4	996510056748	MOTOR BOWL	For all Avance Food Processor
5	996510056739	TOP HOUSING	For all Avance Food Processor
6	996510056757	HOUSING (BLACK)	For HR7776/HR7777 (not include HR7777/00)
	996510056819	HOUSING (BLACK,WALITA)	For RI7776 only
	996510056823	HOUSING (METAL BODY)	For HR7778 and HR7777/00 only
	996510056817	HOUSING (METAL BODY,WALITA)	For HR7778/02 Mexico, RI7778 only
7	996510056746	RUBBER FEET	For all Avance Food Processor
8	996510056734	SWITCH KNOB	For all Avance Food Processor
9	996510074791	PCBA HV NEW	For all HV Avance Food Processor
	996510074821	PCBA LV NEW	For RI7776/91 & RI7778/01 & HR7778/02 Mexico
	996510074792	PCBA Brazil HV NEW	For RI7776/90 & RI7778/00
10	996510075315	HOLDER SAFETY SWITCH + LEVER (JAR)	For HR7776/RI7776/HR7777/HR7778/02
11	996510075316	HOLDER SAFETY SWITCH + LEVER (JUICER)	For HR7776/RI7776/HR7777/HR7778/02
12	996510056776	CORD STORAGE BOX	For HR7776/RI7776/HR7777/HR7778/02
13	996510056755	DRIVING COUPLING ASSY	For HR7776/RI7776/HR7777/HR7778/02
14	996510074881	MOTOR ASSY NEW	For all Avance FP except RI7776/91 & RI7778/01 & HR7778/02 Mexico
	996510074882	MOTOR ASSY LV NEW	For RI7776/91 & RI7778/01 & HR7778/02 Mexico
15	996510056736	POWER CORD WITH COVER + FERRITE CORE	For HR7776/90 & HR7777/HR7778/00
	996510056767	POWER CORD 3PIN	For HR7776/91 & HR7778/01
	996510056811	POWER CORD WITH COVER + FERRITE CORE	For RI7776/RI7778
	996510056822	POWER CORD AUS VERSION	For HR7778/03
	996510074279	POWER CORD MEXICO	For HR7778/02 Mexico
16	996510074168	BOTTOM NEW	For all Avance Food Processor
17	996510056815	JUICER LID	For HR7778/RI7778/HR7986/RI7986
18	996510056808	PUSHER	For HR7778/RI7778/HR7986/RI7986
19	996510056812	SIEVE BLADE DISC + FILTER MESH ASSY	For HR7778/RI7778/HR7986/RI7986
20	996510056816	JUICER BOWL	For HR7778/RI7778/HR7986/RI7986
21	996510056818	JUICER BASE + LOCK ARM	For HR7778/RI7778/HR7986/RI7986
22	996510073288	BRUSH NEW	For HR7778/RI7778
23	996510075464	MEASURING CUP (JUICER BOWL)	For HR7778/RI7778
24	996510056762	BOWL PUSHER	For all Avance Food Processor
25	996510056732	BOWL LID	For all Avance Food Processor

Partslists

HR7776/HR7777/HR7778/RI7776/RI7778

Pos	12NC	Description	Remark
26	996510074167	DRIVER NEW	For all Avance Food Processor
27	996510070034	BOWL ASSY	For all Avance Food Processor
28	996510056735	CHOPPING KNIFE	For all Avance Food Processor
29	996510056772	REAMER HEAD	For all Avance Food Processor
30	996510068483	REAMER BOWL	For all Avance Food Processor
33	996510056766	KNEADING HOOK	For all Avance Food Processor
34	996510056733	GRANULATING DISC	For all Avance Food Processor
35	996510056804	JULIENNE DISC	For HR7778/RI7778/HR7987/RI7987
36	996510056821	FRENCH FRIES DISC (9 X 9MM)	HR7778/HR7987/RI7987
37	996510056775	SHREDDING DISC	For all Avance Food Processor and HR7987/RI7987
38	996510056765	ADJUSTABLE SLICING DISC	For all Avance Food Processor
39	996510069212	BALLOON BEATER ASSY	For all Avance Food Processor
41	996510056769	SPATULA	For all Avance Food Processor
42	996510056742	MEASURING CUP (JAR)	For all Avance Food Processor
43	996510056751	JAR LID	For all Avance Food Processor
44	996510075584	BLENDER JAR	For all Avance Food Processor
45	996510075463	KNIFE UNIT NEW	For all Avance Food Processor and HR7989
46	996500023151	SEALING RING - BLENDER KNIFE	For all Avance Food Processor
47	996510056749	MINI JUCIER PUSHER	For HR7777
48	996510056764	MINI JUCIER LID	For HR7777
49	996510056743	JUCIER CONTAINER	For HR7777
50	996510056759	JUCIER FILTER	For HR7777
51	996510056771	SAFETY SWITCH + SWITCH HOLDER (JAR)	For all Avance Food Processor
52	996510056744	SAFETY SWITCH + SWITCH HOLDER (JUICER)	For all Avance Food Processor
53	996510075468	JAR MILL ASSY	For HR7989, HR7776 MEA & Dubai, HR7778 MEA & Dubai
54	996510056876	MINI BOWL LID	For HR7994/RI7994
55	996510056877	BLADE + BLADE HOLDER	For HR7994/RI7994
56	996510056878	MINI BOWL	For HR7994/RI7994
57	996510057063	STORAGE BOX	For HR7993/HR7778
58	996510057062	STORAGE BOX LID	For HR7993/HR7778
59	996510071101	MICROSWITCH+LEADWIRE	For RI7778/01 RI7776/91

Main unit view

HR7776/HR7777/HR7778/RI7776/RI7778

1



2



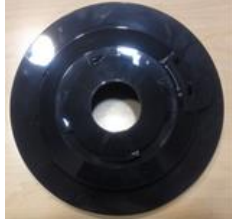
3



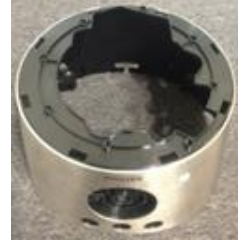
4



5



6



7



8



9



10



11



12



13



14



15



Main unit view

HR7776/HR7777/HR7778/RI7776/RI7778

16



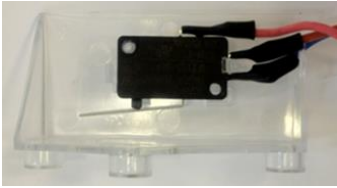
19



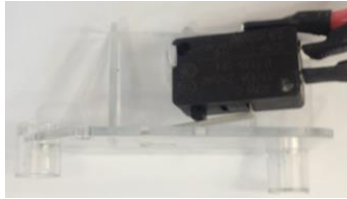
26



51



52



Accessorry view

HR7776/HR7777/HR7778/RI7776/RI7778

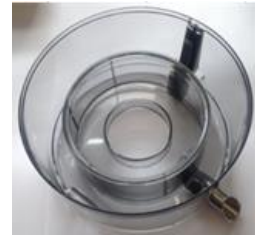
17



18



20



21



22



Old Brush



New Brush

23



24



25



27



28



29



30



33



34



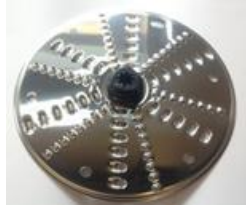
35



36



37



38



39



41



42



43



44



45



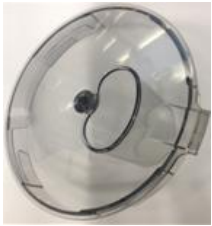
46



47



48



49



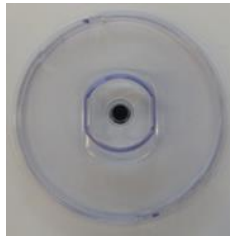
50



53



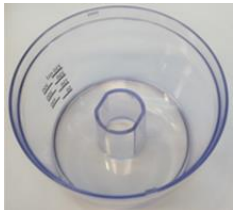
54



55



56



57



58



Remark**HR7776/HR7777/HR7778/RI7776/RI7778**

For these two models: RI7776/91(886777691240), RI7778/01(886777801240), here comes an important clarification, please note.

The spare part—PCBA (996510069353) should match up with the spare part MICROSWITCH+LEADWIRE (996510071101) when doing repair on the products with below three POs & PCBA Date Code.

Philips PO.	PCBA Date Code
APC-FLE070039	S140530
APC-FLE070040	S140530
APC-BRA070519	S140502

The 12NC for PCBA (MICROSWITCH+LEADWIRE): 996510071066---can apply for all the products of Brazil LV without product date code limitation.

Revision list

HR7776/HR7777/HR7778/RI7776/RI7778

1.	Version A : Initial release	
2.	Version B : Add HR7986/RI7986/RI7987/RI7994 accessory models	
3.	Version C : Update product dimension information on first page.	
4.	Version D : Add HR7777/00 – change to metal housing, construction and other accessories are same as other HR7777 versions.	
5.	Version E : Update reamer bowl which is position 30.	
6.	Version F : make position 39 & 40 as one spare part balloon beater assy, the old stock need scrap.	
7.	Version G : change PCBA for all versions(remove out the diode from the old PCBA)	
8.	Version H : change position #27 bowl nuts.	
9.	Version I : combine BOWL, BOWL HANDLE and BOWL SAFETY LEVER as one spare part. ---WK1409	
10.	Version J : change all high version PCBA (except Brazil) from 996510069354 to 996510071054 for quality improvement. Brazil LV & HV will be changed to new 12NC later ---WK1430.	
11.	Version K : Change Brazil HV & LV PCBA from 996510069354 to 996510071065(HV), 996510069353 to 996510071066(LV) for quality improvement---WK1431.	
12.	Version L : add MICROSWITCH+LEADWIRE 12NC (996510071101) into part list, which should be used together with PCBA (996510069353) when do repair for special three PO. Add detail repairing instruction into SM. --- WK1433	
13.	Version M : change power from 1000w to 1300w. --- WK1439	
14.	Version N : change the brush of position 22 from 12NC#996510056807 to new brush 12NC#996510073288 for HR7778/RI7778 base on CP1355.It's running change and implementation date is WK1521. --- WK1519	
15.	Version O : Change PCBA as below for quality improvement (CP1428). (This is short term solution. The long term solution will be provided later once it's available.) PCBA (MICROSWITCH+LEADWIRE) HV From 996510071054 to 996510073425. PCBA (MICROSWITCH+LEADWIRE) BR HV From 996510071065 to 996510073426. PCBA (MICROSWITCH+LEADWIRE) BR LV From 996510071066 to 996510073427. --- WK1524	
16.	Version P : Change part16. Bottom from 996510056745 to 996510074168 base on CP1436, implementation date is wk1533. Change part26. Driver from 996510056761 to 996510074167 base on CP1443, implementation date is wk1541. --- WK1538	
17.	Version Q : Add HR7778/02 Mexico version. --- WK1538	
18.	Version R: Change PCBA from old 12NC-996510073425, 996510073426, 996510073427 to the new 12NC-996510074791(HV), 996510074792(Brazil HV) and 996510074821(Brazil LV) based on the CP#1449 for quality improvement, implement date is WK1549; Change KNIFE UNIT old 12NC-996510056737 to the new 12NC 996510074784 based on the CP#1433 for quality improvement, implement date is WK1542; Remark: all above old parts' stocks need to be used up, then place new 12NC# for new order and the implement date information is based on the mail that PM confirmed with supplier---WK1546.	
19.	Version S: Change motor from old 12NC-996510056747, 996510056805 to the new 12NC 996510074881, 996510074882 for motor fan was changed from Ø70mm to Ø55mm, the CP#1472, implementation date is WK1549 and use up all old motor stocks then running change to the new parts---WK1549.	
20.	Version T: Change HOLDER SAFETY SWITCH + LEVER from old 12NC-996510056753, 996510056738 to the new 12NC 996510075315, 996510075316 for this part has been removed the water pipe for quality improvement based on TCP6801&6802 in 2013.Change JAR MILL ASSY from old 12NC 996510056882 to new 12NC 996510075317 for adding the MAX logo based on TCP6799. -----WK1615.	
21.	Version U: change MEASURING CUP (JUICER BOWL) from 996510056803 to 996510075464; KNIFE UNIT NEW from 996510074784 to 996510075463; JAR MILL ASSY NEW from 996510075317 to 996510075468. TCP6892/6893/CP6876/6877/6878/6879/6880. -----WK1618	
22.	Version V : change Blender Jar from 996510056768 to 996510075584. The new JAR 996510075584 can only match with new knife unite 996510075463; and the old jar 996510056768 can only match with the old knife unite 996510074784. new and old part are not interchangeable. The product's date code before 1620 (1620 is included) is used former Jar 996510056768 and former Knife 996510074784. The product's date code after 1622 (1622 is included) is used new Jar 996510075584 and new Knife 996510075463.TCP6892/6893/CP6876/6877/6878/6879/6880 -----WK1624	