



Philips Consumer Life Style

# Service Manual

## TECHNICAL INFORMATION

- Power : 1000 W
- Voltage / frequency : 220 - 240V / 50 - 60 Hz
- Bowl capacity dry : 3.4 L
- Bowl capacity dough : 1700 g
- Bowl capacity flour : 1000 g
- Bowl volume capacity liquid : 2 L
- Safety : Lid & bowl detection, mechanical 1.5 sec brake
- Cord length : 1.2 m
- Color : Ink black for HR7776/HR7777/RI7776  
Metal/black for HR7778/RI7778

## HR7778/RI7778/HR7777/HR7776/RI7776 dimensions(L X W X H)

- Product : 265 X 254 X 191 mm
- Product with bowl : 289 X 254 X 436 mm
- Product with blender : 265 X 254 X 440 mm

## Materials:

- Housing : ABS
- Speed knob : ABS
- Pusher : ABS
- Bowl including lid : SAN
- Citrus press : PP
- Discs, chopping knife : Stainless steel
- Kneading tool : PP and metal
- Knife bolder, balloon beater :POM

## Avance Food Processor Accessory

- There are some models could be used as avance food processor accessory, HR7986/HR7987/HR7989/HR7993/HR7994/RI7986/RI7987/RI7994

## ASSEMBLY & DISASSEMBLY ADVICE

- No specific issues

## REPAIR INSTRUCTION

- No specific issues

## OPTIONAL (accessories)

- No specific issues

## SAFETY

- This product meets the requirements regarding interference suppression on radio and TV.
- After the product has been repaired, it should function properly and has to meet the safety requirements as officially laid down at this moment.

# Partslists

# HR7776/HR7777/HR7778/RI7776/RI7778

| Pos | 12NC           | Description                           | Remark   |
|-----|----------------|---------------------------------------|--|
| 1   | 9965 100 56756 | ICE KNOB (BLACK)                      | For HR7776/RI7776/HR7777                                   |
|     | 9965 100 56814 | ICE KNOB (SMOKE CHROME)               | For HR7778/RI7778  |
| 2   | 9965 100 56731 | KNEADING KNOB (BLACK)                 | For HR7776/RI7776/HR7777                                   |
|     | 9965 100 56809 | KNEADING KNOB (SMOKE CHROME)          | For HR7778/RI7778  |
| 3   | 9965 100 56758 | WHIPPING KNOB (BLACK)                 | For HR7776/RI7776/HR7777                                   |
|     | 9965 100 56806 | WHIPPING KNOB (SMOKE CHROME)          | For HR7778/RI7778  |
| 4   | 9965 100 56748 | MOTOR BOWL                            | For all Avance Food Processor                              |
| 5   | 9965 100 56739 | TOP HOUSING                           | For all Avance Food Processor                              |
| 6   | 9965 100 56757 | HOUSING (BLACK)                       | For HR7776/HR7777  |
|     | 9965 100 56819 | HOUSING (BLACK,WALITA)                | For RI7776 only  |
|     | 9965 100 56823 | HOUSING (METAL BODY)                  | For HR7778 only  |
|     | 9965 100 56817 | HOUSING (METAL BODY,WALITA)           | For RI7778 only  |
| 7   | 9965 100 56746 | RUBBER FEET                           | For all Avance Food Processor                              |
| 8   | 9965 100 56734 | SWITCH KNOB                           | For all Avance Food Processor                              |
| 9   | 9965 100 56729 | PCBA (HV)                             | For all Avance Food Processor except RI7776/91 & RI7778/01 |
|     | 9965 100 56813 | PCBA (LV)                             | For RI7776/91 & RI7778/01                                  |
| 10  | 9965 100 56753 | HOLDER SAFETY SWITCH + LEVER (JAR)    | For HR7776/RI7776/HR7777                                   |
| 11  | 9965 100 56738 | HOLDER SAFETY SWITCH + LEVER (JUICER) | For HR7776/RI7776/HR7777                                   |
| 12  | 9965 100 56776 | CORD STORAGE BOX                      | For HR7776/RI7776/HR7777                                   |
| 13  | 9965 100 56755 | DRIVING COUPLING ASSY                 | For HR7776/RI7776/HR7777                                   |
| 14  | 9965 100 56747 | MOTOR ASSY                            | For all Avance Food Processor except RI7776/91 & RI7778/01 |
|     | 9965 100 56805 | MOTOR ASSY(LV)                        | For RI7776/91 & RI7778/01                                  |
| 15  | 9965 100 56736 | POWER CORD WITH COVER + FERRITE CORE  | For HR7776/90 & HR7777/HR7778/00                           |
|     | 9965 100 56767 | POWER CORD 3PIN                       | For HR7776/91 & HR7778/01                                  |
|     | 9965 100 56811 | POWER CORD WITH COVER + FERRITE CORE  | For RI7776/RI7778  |
|     | 9965 100 56822 | POWER CORD AUS VERSION                | For HR7778/03  |
| 16  | 9965 100 56745 | BOTTOM                                | For all Avance Food Processor                              |
| 17  | 9965 100 56815 | JUICER LID                            | For HR7778/RI7778/HR7986/RI7986                            |
| 18  | 9965 100 56808 | PUSHER                                | For HR7778/RI7778/HR7986/RI7986                            |
| 19  | 9965 100 56812 | SIEVE BLADE DISC + FILTER MESH ASSY   | For HR7778/RI7778/HR7986/RI7986                            |
| 20  | 9965 100 56816 | JUICER BOWL                           | For HR7778/RI7778/HR7986/RI7986                            |
| 21  | 9965 100 56818 | JUICER BASE + LOCK ARM                | For HR7778/RI7778/HR7986/RI7986                            |
| 22  | 9965 100 56807 | BRUSH                                 | For HR7778/RI7778  |
| 23  | 9965 100 56803 | MEASURING CUP (JUICER BOWL)           | For HR7778/RI7778  |
| 24  | 9965 100 56762 | BOWL PUSHER                           | For all Avance Food Processor                              |
| 25  | 9965 100 56732 | BOWL LID                              | For all Avance Food Processor                              |
| 26  | 9965 100 56761 | DRIVER                                | For all Avance Food Processor                              |

# Partslists

# HR7776/HR7777/HR7778/RI7776/RI7778

| Pos | 12NC           | Description                               | Remark   |
|-----|----------------|---|--|
| 27  | 9965 100 56763 | BOWL                                      | For all Avance Food Processor  |
| 28  | 9965 100 56735 | CHOPPING KNIFE                            | For all Avance Food Processor  |
| 29  | 9965 100 56772 | REAMER HEAD                               | For all Avance Food Processor  |
| 30  | 9965 100 56754 | REAMER BOWL                               | For all Avance Food Processor  |
| 31  | 9965 100 56741 | BOWL HANDLE                               | For all Avance Food Processor  |
| 32  | 9965 100 56773 | BOWL SAFETY LEVER                         | For all Avance Food Processor  |
| 33  | 9965 100 56766 | KNEADING HOOK                             | For all Avance Food Processor  |
| 34  | 9965 100 56733 | GRANULATING DISC                          | For all Avance Food Processor  |
| 35  | 9965 100 56804 | JULIENNE DISC                             | For<br>HR7778/RI7778/HR7987/RI7987   |
| 36  | 9965 100 56821 | FRENCH FRIES DISC (9 X 9MM)               | HR7778/HR7987/RI7987   |
| 37  | 9965 100 56775 | SHREDDING DISC                            | For all Avance Food Processor<br>and HR7987/RI7987                                     |
| 38  | 9965 100 56765 | ADJUSTABLE SLICING DISC                   | For all Avance Food Processor  |
| 39  | 9965 100 56752 | WHISK                                     | For all Avance Food Processor  |
| 40  | 9965 100 56774 | WHISK WIRE ASSY                           | For all Avance Food Processor  |
| 41  | 9965 100 56769 | SPATULA                                   | For all Avance Food Processor  |
| 42  | 9965 100 56742 | MEASURING CUP (JAR)                       | For all Avance Food Processor  |
| 43  | 9965 100 56751 | JAR LID                                   | For all Avance Food Processor  |
| 44  | 9965 100 56768 | BLENDER JAR                               | For all Avance Food Processor  |
| 45  | 9965 100 56737 | KNIFE UNIT                                | For all Avance Food Processor<br>and HR7989  |
| 46  | 9965 000 23151 | SEALING RING - BLENDER KNIFE              | For all Avance Food Processor  |
| 47  | 9965 100 56749 | MINI JUCIER PUSHER                        | For HR7777   |
| 48  | 9965 100 56764 | MINI JUCIER LID                           | For HR7777   |
| 49  | 9965 100 56743 | JUCIER CONTAINER                          | For HR7777   |
| 50  | 9965 100 56759 | JUCIER FILTER                             | For HR7777   |
| 51  | 9965 100 56771 | SAFETY SWITCH + SWITCH HOLDER (JAR)       | For all Avance Food Processor  |
| 52  | 9965 100 56744 | SAFETY SWITCH + SWITCH HOLDER<br>(JUICER) | For all Avance Food Processor<br>For HR7989, HR7776 MEA &<br>Dubai, HR7778 MEA & Dubai |
| 53  | 9965 100 56882 | JAR MILL ASSY                             | For HR7989, HR7776 MEA &<br>Dubai, HR7778 MEA & Dubai                                  |
| 54  | 9965 100 56876 | MINI BOWL LID                             | For HR7994/RI7994  |
| 55  | 9965 100 56877 | BLADE + BLADE HOLDER                      | For HR7994/RI7994  |
| 56  | 9965 100 56878 | MINI BOWL                                 | For HR7994/RI7994  |
| 57  | 9965 100 57063 | STORAGE BOX                               | For HR7993/HR7778  |
| 58  | 9965 100 57062 | STORAGE BOX LID                           | For HR7993/HR7778  |

# Main unit view

# HR7776/HR7777/HR7778/RI7776/RI7778

1



2



3



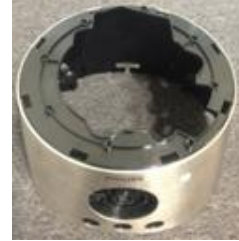
4



5



6



7



8



9



10



11



12



13



14



15



# Main unit view

HR7776/HR7777/HR7778/RI7776/RI7778

16



19



26



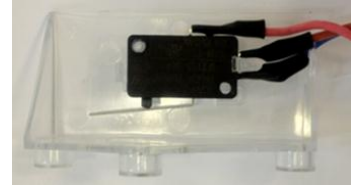
31



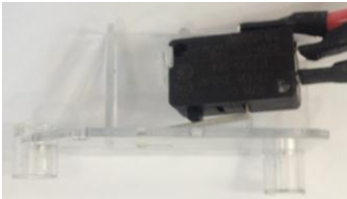
32



51



52



Accessorry view

HR7776/HR7777/HR7778/RI7776/RI7778

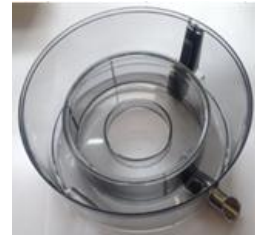
17



18



20



21



22



23



24



25



27



28



29



30



33



34



35



Accessorry view

HR7776/HR7777/HR7778/RI7776/RI7778

36



37



38



39



40



41



42



43



44



45



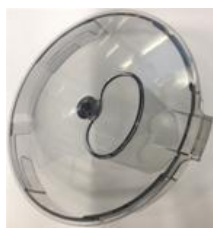
46



47



48



49



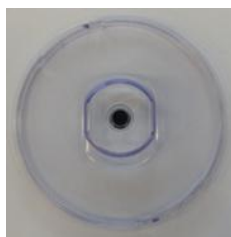
50



53



54



55



56



57



58





## Revision list

**HR7776/HR7777/HR7778/RI7776/RI7778**

1. Version A : Initial release
2. Version B : Add HR7986/RI7986/RI7987/RI7994 accessory models
3. Version C : Update product dimension information on first page.