



Philips Consumer Life Style

Service Manual

TECHNICAL INFORMATION

- Power : 1000 W
- Voltage / frequency : 220 - 240V / 50 - 60 Hz
- Bowl capacity dry : 3.4 L
- Bowl capacity dough : 1700 g
- Bowl capacity flour : 1000 g
- Bowl volume capacity liquid : 2 L
- Safety : Lid & bowl detection, mechanical 1.5 sec brake
- Cord length : 1.2 m
- Color : Ink black for HR7776;HR7777;RI7776
Metal/black for HR7778;RI7778;HR7777/00

HR7778/RI7778/HR7777/HR7776/RI7776 dimensions(L X W X H)

- Product : 265 X 254 X 191 mm
- Product with bowl : 289 X 254 X 436 mm
- Product with blender : 265 X 254 X 440 mm

Materials:

- Housing : ABS
- Speed knob : ABS
- Pusher : ABS
- Bowl including lid : SAN
- Citrus press : PP
- Discs, chopping knife : Stainless steel
- Kneading tool : PP and metal
- Knife bolder, balloon beater :POM

Avance Food Processor Accessory

- There are some models could be used as avance food processor accessory, HR7986/HR7987/HR7989/HR7993/HR7994/RI7986/RI7987/RI7994

ASSEMBLY & DISASSEMBLY ADVICE

- No specific issues

REPAIR INSTRUCTION

- No specific issues

OPTIONAL (accessories)

- No specific issues

SAFETY

- This product meets the requirements regarding interference suppression on radio and TV.
- After the product has been repaired, it should function properly and has to meet the safety requirements as officially laid down at this moment.

Partslists

HR7776/HR7777/HR7778/RI7776/RI7778

Pos	12NC	Description	Remark
1	9965 100 56756	ICE KNOB (BLACK)	For HR7776/RI7776/HR7777
	9965 100 56814	ICE KNOB (SMOKE CHROME)	For HR7778/RI7778
2	9965 100 56731	KNEADING KNOB (BLACK)	For HR7776/RI7776/HR7777
	9965 100 56809	KNEADING KNOB (SMOKE CHROME)	For HR7778/RI7778
3	9965 100 56758	WHIPPING KNOB (BLACK)	For HR7776/RI7776/HR7777
	9965 100 56806	WHIPPING KNOB (SMOKE CHROME)	For HR7778/RI7778
4	9965 100 56748	MOTOR BOWL	For all Avance Food Processor
5	9965 100 56739	TOP HOUSING	For all Avance Food Processor
6	9965 100 56757	HOUSING (BLACK)	For HR7776/HR7777 (not include HR7777/00)
	9965 100 56819	HOUSING (BLACK,WALITA)	For RI7776 only
	9965 100 56823	HOUSING (METAL BODY)	For HR7778 and HR7777/00 only
	9965 100 56817	HOUSING (METAL BODY,WALITA)	For RI7778 only
7	9965 100 56746	RUBBER FEET	For all Avance Food Processor
8	9965 100 56734	SWITCH KNOB	For all Avance Food Processor
9	996510069354	PCBA (HV)	For all Avance Food Processor except RI7776/91 & RI7778/01
	996510069353	PCBA (LV)	For RI7776/91 & RI7778/01
10	9965 100 56753	HOLDER SAFETY SWITCH + LEVER (JAR)	For HR7776/RI7776/HR7777
11	9965 100 56738	HOLDER SAFETY SWITCH + LEVER (JUICER)	For HR7776/RI7776/HR7777
12	9965 100 56776	CORD STORAGE BOX	For HR7776/RI7776/HR7777
13	9965 100 56755	DRIVING COUPLING ASSY	For HR7776/RI7776/HR7777
14	9965 100 56747	MOTOR ASSY	For all Avance Food Processor except RI7776/91 & RI7778/01
	9965 100 56805	MOTOR ASSY(LV)	For RI7776/91 & RI7778/01
15	9965 100 56736	POWER CORD WITH COVER + FERRITE CORE	For HR7776/90 & HR7777/HR7778/00
	9965 100 56767	POWER CORD 3PIN	For HR7776/91 & HR7778/01
	9965 100 56811	POWER CORD WITH COVER + FERRITE CORE	For RI7776/RI7778
	9965 100 56822	POWER CORD AUS VERSION	For HR7778/03
16	9965 100 56745	BOTTOM	For all Avance Food Processor
17	9965 100 56815	JUICER LID	For HR7778/RI7778/HR7986/RI7986
18	9965 100 56808	PUSHER	For HR7778/RI7778/HR7986/RI7986
19	9965 100 56812	SIEVE BLADE DISC + FILTER MESH ASSY	For HR7778/RI7778/HR7986/RI7986
20	9965 100 56816	JUICER BOWL	For HR7778/RI7778/HR7986/RI7986
21	9965 100 56818	JUICER BASE + LOCK ARM	For HR7778/RI7778/HR7986/RI7986
22	9965 100 56807	BRUSH	For HR7778/RI7778
23	9965 100 56803	MEASURING CUP (JUICER BOWL)	For HR7778/RI7778
24	9965 100 56762	BOWL PUSHER	For all Avance Food Processor
25	9965 100 56732	BOWL LID	For all Avance Food Processor
26	9965 100 56761	DRIVER	For all Avance Food Processor

Partslists

HR7776/HR7777/HR7778/RI7776/RI7778

Pos	12NC	Description	Remark
27	996 5100 69733	BOWL	For all Avance Food Processor
28	9965 100 56735	CHOPPING KNIFE	For all Avance Food Processor
29	9965 100 56772	REAMER HEAD	For all Avance Food Processor
30	9965 100 68483	REAMER BOWL	For all Avance Food Processor
31	9965 100 56741	BOWL HANDLE	For all Avance Food Processor
32	9965 100 56773	BOWL SAFETY LEVER	For all Avance Food Processor
33	9965 100 56766	KNEADING HOOK	For all Avance Food Processor
34	9965 100 56733	GRANULATING DISC	For all Avance Food Processor
35	9965 100 56804	JULIENNE DISC	For HR7778/RI7778/HR7987/RI7987
36	9965 100 56821	FRENCH FRIES DISC (9 X 9MM)	HR7778/HR7987/RI7987
37	9965 100 56775	SHREDDING DISC	For all Avance Food Processor and HR7987/RI7987
38	9965 100 56765	ADJUSTABLE SLICING DISC	For all Avance Food Processor
39	9965 100 69212	BALLOON BEATER ASSY	For all Avance Food Processor
41	9965 100 56769	SPATULA	For all Avance Food Processor
42	9965 100 56742	MEASURING CUP (JAR)	For all Avance Food Processor
43	9965 100 56751	JAR LID	For all Avance Food Processor
44	9965 100 56768	BLENDER JAR	For all Avance Food Processor
45	9965 100 56737	KNIFE UNIT	For all Avance Food Processor and HR7989
46	9965 000 23151	SEALING RING - BLENDER KNIFE	For all Avance Food Processor
47	9965 100 56749	MINI JUCIER PUSHER	For HR7777
48	9965 100 56764	MINI JUCIER LID	For HR7777
49	9965 100 56743	JUCIER CONTAINER	For HR7777
50	9965 100 56759	JUCIER FILTER	For HR7777
51	9965 100 56771	SAFETY SWITCH + SWITCH HOLDER (JAR)	For all Avance Food Processor
52	9965 100 56744	SAFETY SWITCH + SWITCH HOLDER (JUICER)	For all Avance Food Processor For HR7989, HR7776 MEA & Dubai, HR7778 MEA & Dubai
53	9965 100 56882	JAR MILL ASSY	For HR7994/RI7994
54	9965 100 56876	MINI BOWL LID	For HR7994/RI7994
55	9965 100 56877	BLADE + BLADE HOLDER	For HR7994/RI7994
56	9965 100 56878	MINI BOWL	For HR7994/RI7994
57	9965 100 57063	STORAGE BOX	For HR7993/HR7778
58	9965 100 57062	STORAGE BOX LID	For HR7993/HR7778

Main unit view

HR7776/HR7777/HR7778/RI7776/RI7778

1



2



3



4



5



6



7



8



9



10



11



12



13



14



15



Main unit view

HR7776/HR7777/HR7778/RI7776/RI7778

16



19



26



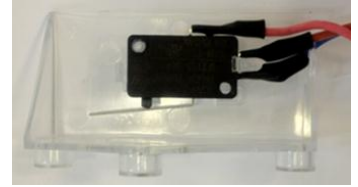
31



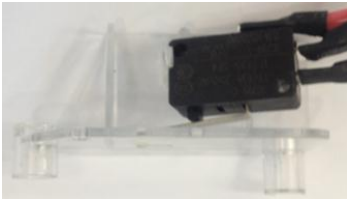
32



51



52



Accessorry view

HR7776/HR7777/HR7778/RI7776/RI7778

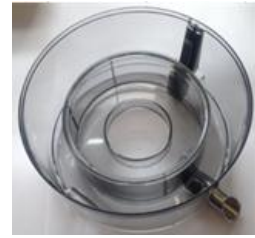
17



18



20



21



22



23



24



25



27



28



29



30



33



34



35



36



37



38



39



41



42



43



44



45



46



47



48



49



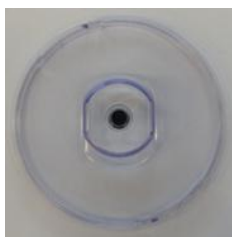
50



53



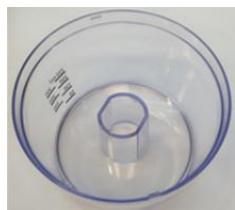
54



55



56



57



58



Revision list

HR7776/HR7777/HR7778/RI7776/RI7778

1. Version A : Initial release
2. Version B : Add HR7986/RI7986/RI7987/RI7994 accessory models
3. Version C : Update product dimension information on first page.
4. Version D: Add HR7777/00 – change to metal housing, construction and other accessories are same as other HR7777 versions.
5. Version E: Update reamer bowl which is position 30.
6. Version F: make position 39 & 40 as one spare part balloon beater assy, the old stock need scrap.
7. Version G: change PCBA for all versions(remove out the diode from the old PCBA)
8. Version H: change position #27 bowl nuts.