

Service  
Service  
Service



HR7951  
HR7954  
HR7958  
HR7950  
HR7955  
HR7974  
HR7978

Philips Consumer Life Style

# Service Manual

## PRODUCT INFORMATION

### Features

- Color(s): White
- Housing material: ABS
- Beater tools: Metal
- Material bowl: Stainless steel

### Accessories included

- 1.25L blender jar
- 4star removable blender blade set
- 1.5L Food processor with discs for HR7954/HR7958/HR7978
- 4L metal bowl
- Bowl handle
- Bowl splash cover
- Citrus press for HR7954/HR7958/HR7978/HR7974
- Grinder Mill
- Meat mincer for HR7958/HR7978/HR7974
- Metal kneading hook
- Metal beater
- Meat Mincer Mill & Chopper for HR7958/HR7978/HR7974
- Whisk
- Juicer Assy (for HR7974)

## TECHNICAL INFORMATION

- Power : 900 W
- Frequency : 50 / 60 Hz
- Speed : 16500r/min
- Power cord set length : 1.1 m
- Product size:
- Length : 330 mm
- Width : 584 mm
- Height : 360 mm
- Weight(no packaging) : 6.27kg for HR7954
- Material of main unit : plastic

## SAFETY

- This product meets the requirements regarding interference suppression on radio and TV.
- After the product has been repaired, it should function properly and has to meet the safety requirements as officially laid down at this moment.

Parts list

HR7951  
HR7954  
HR7958  
HR7950  
HR7955  
HR7974  
HR7978

| Pos | 12NC         | Description                  | Remark             | CRP |
|-----|--------------|------------------------------|--------------------|-----|
| 1   | 996510070499 | Beater                       | All                | Y   |
| 2   | 996510070504 | Hook                         | All                | Y   |
| 3   | 996510070516 | Drive Shaft                  | HR7954/58/78       | Y   |
| 4   | 996510070517 | S-blade                      | HR7954/58/78       | Y   |
| 5   | 996510070526 | Shredder Disc Holder         | HR7954/58/78       | Y   |
| 6   | 996510070521 | Julienne Disc                | HR7954/58/78       | Y   |
| 6   | 996510072784 | Julienne Disc                | HR7974             | Y   |
| 7   | 996510070513 | Pasping Disc                 | HR7954/58/78       | Y   |
| 8   | 996510070515 | Slicer_Shredder Disc         | HR7954/58/78       | Y   |
| 9   | 996510070511 | Bushing                      | HR7954/58/78       | Y   |
| 10  | 996510070523 | Cone & Sleeve                | HR7954/58/78       | Y   |
| 11  | 996510070479 | Filler Cap                   | HR7954/51/58/78    | Y   |
| 12  | 996510070501 | Blade Holder & seal ring     | HR7954/51/58/78    | Y   |
| 13  | 996510070508 | Jar and Jar Lid              | HR7954/51/58       | Y   |
| 13  | 996510072102 | Jar and Jar Lid              | HR7978             | Y   |
| 14  | 996510070509 | Bowl and Bowl Lid            | HR7954/58          | Y   |
| 14  | 996510072114 | Bowl and Bowl Lid            | HR7978             | Y   |
| 15  | 996510070505 | SUS Bowl Cover               | All                | Y   |
| 16  | 996510070473 | Whisk                        | HR7954/51/58/50/55 | Y   |
| 16  | 996510072106 | Whisk Grey                   | HR7978             | Y   |
| 17  | 996510070476 | SUS Bowl                     | All                | Y   |
| 18  | 996510070528 | Mill Cup & Bottom            | HR7958/78          |     |
| 19  | 996510070507 | Link Rubber Foot(yellow)     | HR7954             |     |
| 19  | 996510070634 | Link Rubber Foot(grey)       | HR7951/58/50/55/78 |     |
| 20  | 996510070503 | Rotated Shaft & Spring Assy. | HR7954/51/50       |     |
| 20  | 996510072101 | Rotated Shaft & Spring Assy. | HR7958/55/78       |     |

Parts list

|    |              |                               |                         |  |
|----|--------------|-------------------------------|-------------------------|--|
| 21 | 996510071344 | PCBA                          | HR7954/51/58/78/50      |  |
| 21 | 996510072118 | PCBA CHINA                    | HR7955                  |  |
| 22 | 996510070489 | MM Cover                      | HR7958/78               |  |
| 23 | 996510070502 | FP Cover                      | All                     |  |
| 24 | 996510070481 | Blender Cover                 | All                     |  |
| 25 | 996510070494 | Base                          | HR7954/51/58/50/55      |  |
| 25 | 996510072109 | Base                          | HR7978                  |  |
| 25 | 996510072797 | Base                          | HR7974                  |  |
| 26 | 996510070485 | Damping Assy.                 | All                     |  |
| 27 | 996510070469 | Release Shaft & Spring Assy.  | All                     |  |
| 28 | 996510070495 | Rise Support                  | All                     |  |
| 29 | 996510070475 | Switch Support                | All                     |  |
| 30 | 996510070472 | Safety Lever                  | HR7958/55               |  |
| 30 | 996510072113 | Safety Lever                  | HR7978                  |  |
| 30 | 996510072789 | Safety Lever                  | HR7974                  |  |
| 31 | 996510070496 | FP Interlock Pin              | HR7958/55               |  |
| 31 | 996510072105 | FP Interlock Pin              | HR7978                  |  |
| 31 | 996510072793 | FP Interlock Pin              | HR7974                  |  |
| 32 | 996510070488 | Main Housing Cover            | HR7958/55               |  |
| 32 | 996510072112 | Main Housing Cover Black 7C   | HR7978                  |  |
| 32 | 996510072798 | Main Housing Cover            | HR7974                  |  |
| 33 | 996510070467 | Rubber Foot(yellow)           | HR7954                  |  |
| 33 | 996510070632 | Rubber Foot (grey)            | HR7951/58/55/50/78      |  |
| 34 | 996510070498 | Base Cover(yellow)            | HR7954                  |  |
| 34 | 996510070633 | Base Cover (grey)             | HR7951/58/50/55/78      |  |
| 35 | 996510070493 | Blender Lower Coupling        | HR7958/55/78            |  |
| 36 | 996510070477 | FP Lower Coupling             | HR7958/55/78            |  |
| 37 | 996510070497 | Speed Knob                    | All                     |  |
| 38 | 996510070487 | Lock Knob                     | All                     |  |
| 39 | 996510071347 | Motor, gear box & shaft Assy. | HR7958/78               |  |
| 40 | 996510070465 | Wind Wall                     | All                     |  |
| 41 | 996510070471 | Power Cord                    | HR7954/51/58/50(WE)     |  |
| 41 | 996510072122 | Power Cord MEA                | HR7954/51/58/50/78(MEA) |  |
| 41 | 996510072119 | Power Cord CHINA              | HR7955                  |  |
| 41 | 996510072103 | Power Cord Black              | HR7978 WEU              |  |

HR7951  
HR7954  
HR7958  
HR7950  
HR7955  
HR7974  
HR7978

Parts list

HR7951  
HR7954  
HR7958  
HR7950  
HR7955  
HR7974  
HR7978

| Pos | 12NC         | Description                                   | Remark       | CRP |
|-----|--------------|---|--------------|-----|
| 42  | 996510070474 | Main Housing                                  | HR7958/55    |     |
| 42  | 996510072116 | Main Housing                                  | HR7978       |     |
| 42  | 996510072795 | Main Housing                                  | HR7974       |     |
| 43  | 996510070466 | Motor Bracket                                 | HR7958/55/78 |     |
| 44  | 996510070492 | Rise Cover                                    | HR7958/55    |     |
| 44  | 996510072111 | Rise Cover BLACK 7C                           | HR7978       |     |
| 44  | 996510072794 | Rise Cover                                    | HR7974       |     |
| 45  | 996510070468 | Micro Switch                                  | All          |     |
| 46  | 996510070514 | Pusher  | HR7958       | y   |
| 46  | 996510072115 | PUSHER GREY                                   | HR7978       | y   |
| 47  | 996510070522 | Food Tray & Cover                             | HR7958/78    | y   |
| 48  | 996510070519 | Grinder Chamber                               | HR7958/78    | y   |
| 49  | 996510070512 | Coupling & Seal Ring                          | HR7958/78    | y   |
| 50  | 996510070527 | Worm Shaft                                    | HR7958/78    | y   |
| 51  | 996510070524 | Cutting Blade                                 | HR7958/78    | y   |
| 52  | 996510070525 | Grinding Disc                                 | HR7958/78    | y   |
| 53  | 996510070518 | Worm Screw                                    | HR7958/78    | y   |
| 55  | 996510071346 | Main Housing, Gear box, Shaft & Motor Assy.   | HR7954       |     |
| 55  | 996510071345 | Main Housing, Gear box, Shaft & Motor Assy.   | HR7951/50    |     |
| 55  | 996510072121 | Motor ccc, Gear box shaft & Motor assy, CHINA | HR7955       |     |
| 56  | 996510070483 | screw cover 1#                                | HR7958/55    |     |
| 57  | 996510070506 | screw cover 2#                                | HR7958/55    |     |
| 58  | 996510070486 | screw cover 3#                                | HR7958/55    |     |
| 59  | 996510070491 | screw cover 4#                                | HR7958/55    |     |
| 60  | 996510072108 | Screw cover 1# black 7c                       | HR7978       |     |
| 61  | 996510072117 | Screw cover 2# black 7c                       | HR7978       |     |
| 62  | 996510072107 | Screw cover 3# black 7c                       | HR7978       |     |
| 63  | 996510072104 | Screw cover 4# black 7c                       | HR7978       |     |
| 64  | 996510072796 | screw cover 1#                                | HR7974       |     |
| 65  | 996510072785 | screw cover 2#                                | HR7974       |     |
| 66  | 996510072787 | screw cover 3#                                | HR7974       |     |
| 67  | 996510072788 | screw cover 4#                                | HR7974       |     |
| 69  | 996510072786 | Fine slicing disk ass                         | HR7974       |     |
| 70  | 996510072792 | Coarse slicing ass                            | HR7974       |     |
| 71  | 996510073187 | PUSHER GREY                                   | HR7974       | y   |
| 72  | 996510073189 | HOPPER REAR GREY                              | HR7974       | y   |
| 73  | 996510073185 | WORM SHAFT+ COUPLING                          | HR7974       | y   |
| 74  | 996510073188 | ADJUSTING SCREW                               | HR7974       | y   |
| 75  | 996510057676 | SCREEN  | HR7974       | y   |
| 76  | 996510073186 | SEALING RING                                  | HR7974       | y   |
| 77  | 996510057683 | HOPPER FRONT                                  | HR7974       | y   |
| 78  | 996510073184 | MM HOPPER HOLDER                              | HR7974/58/78 | y   |

Part List view

HR7951  
HR7954  
HR7958  
HR7950  
HR7955  
HR7974  
HR7978



Part List view

HR7951  
HR7954  
HR7958  
HR7950  
HR7955  
HR7974  
HR7978

13



14



15



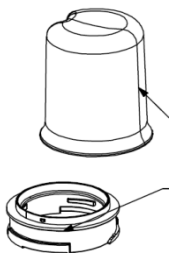
16



17



18



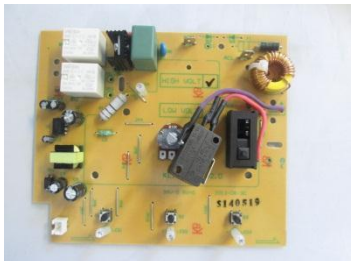
19



20



21



22



23



24



25



26



27



Part List view

HR7951  
HR7954  
HR7958  
HR7955  
HR7978  
HR7950  
HR7974

28



29



30



31



32



33





Part List view

HR7951  
HR7954  
HR7958  
HR7955  
HR7950  
HR7974  
HR7978

34



35



36



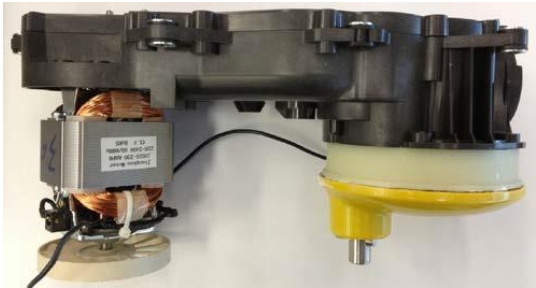
37



38



39



40



41



42

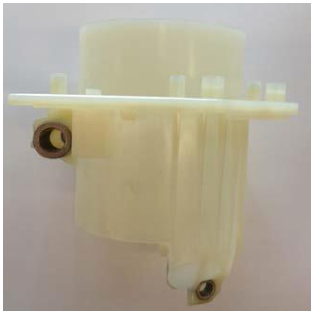




Part List view

HR7951  
HR7954  
HR7958  
HR7950  
HR7955  
HR7974  
HR7978

43



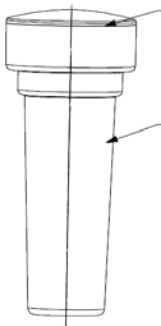
44



45



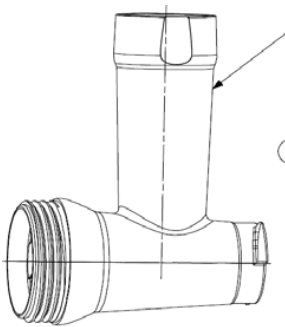
46



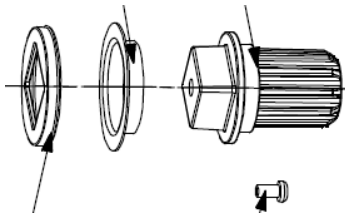
47



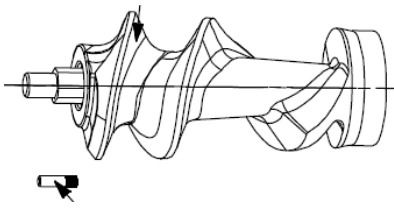
48



49



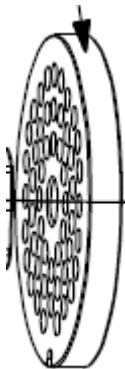
50



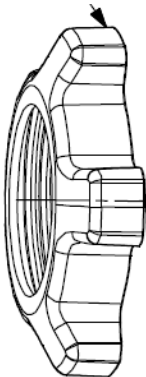
51



52



53

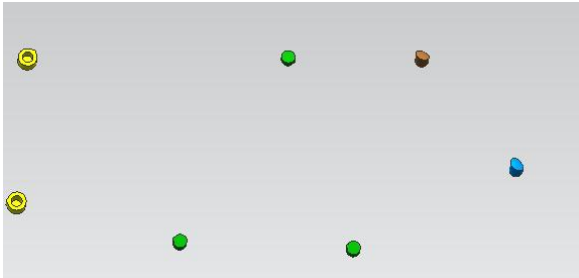
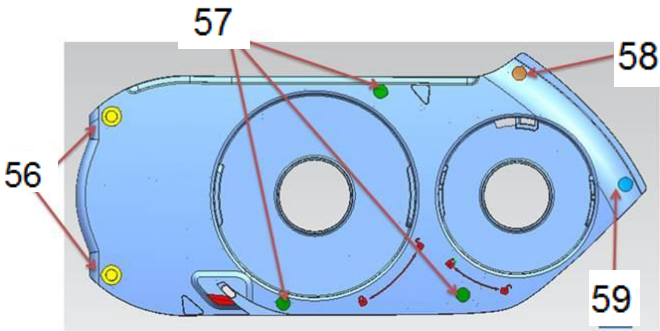


55



Part List view

HR7951  
HR7954  
HR7958  
HR7950  
HR7955  
HR7974  
HR7978



69



71



72



73



74



75



76



77

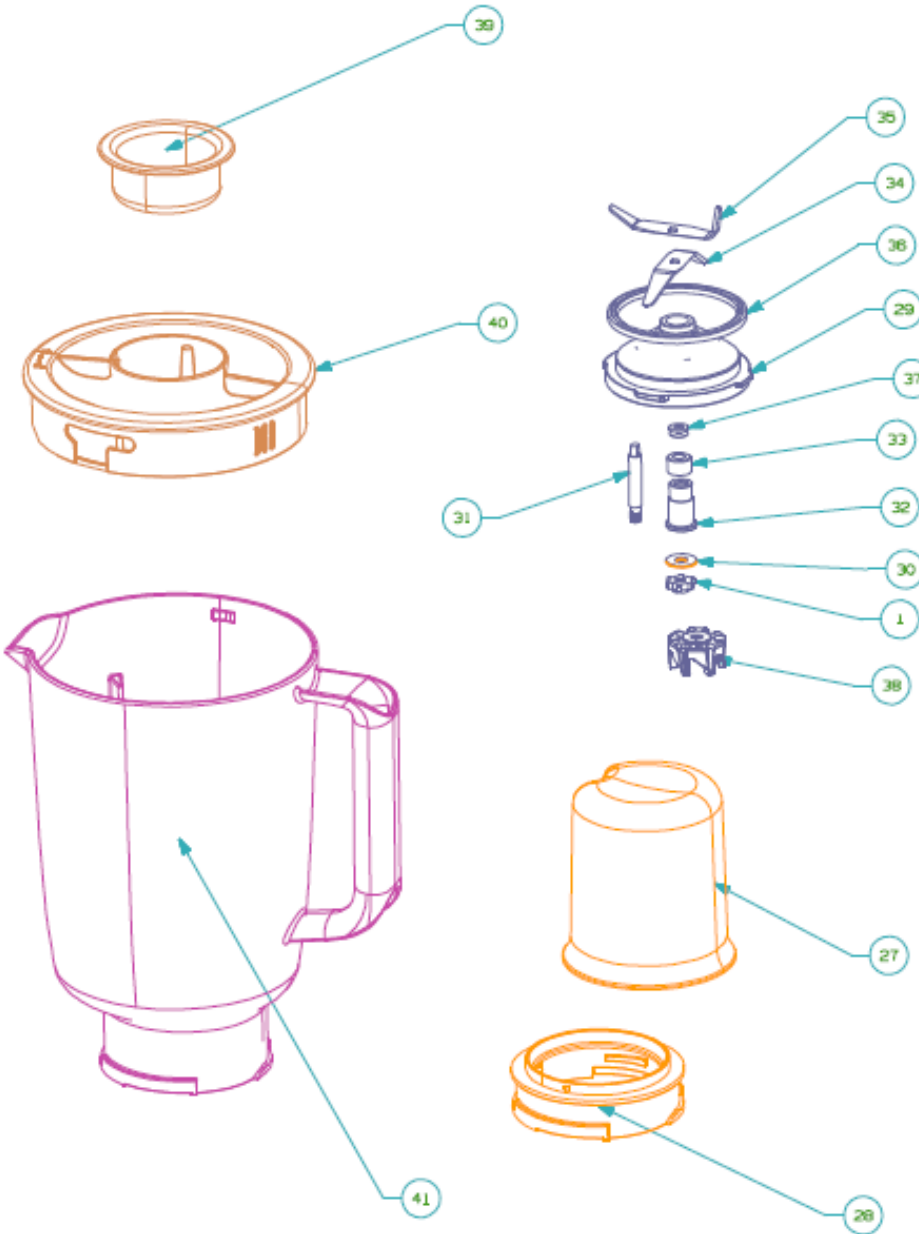


78



Product Accessory explosive drawing

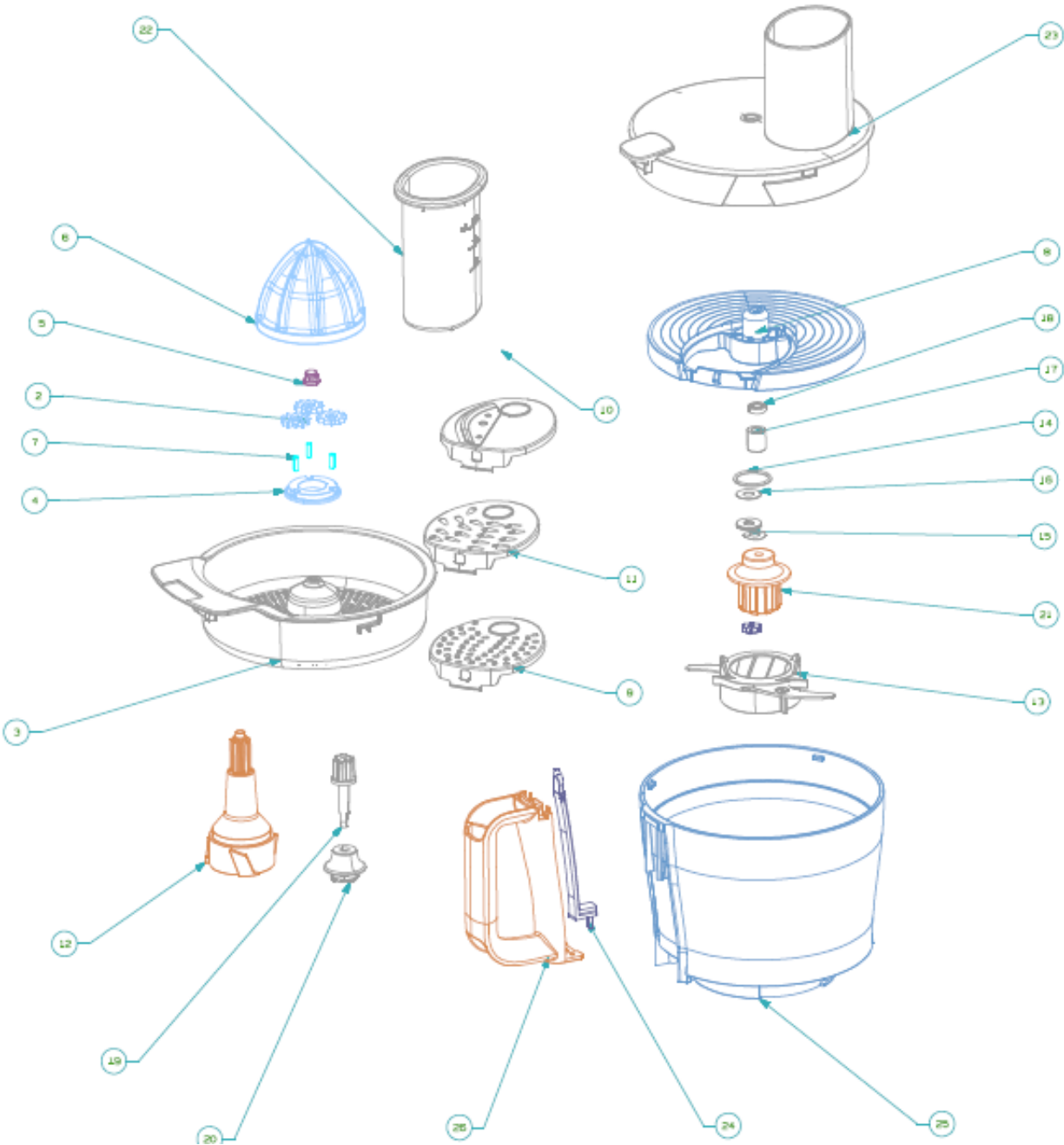
HR7951  
HR7954  
HR7958  
HR7950  
HR7955  
HR7974  
HR7978



|       |                            |     |
|-------|----------------------------|-----|
| 41    | PLASTIC JAR                | 1   |
| 40    | JAR LID                    | 1   |
| 39    | FILLER CAP                 | 1   |
| 38    | PLASTIC UPPER CLTUCH       | 1   |
| 37    | V-SEALING                  | 1   |
| 36    | SEALING                    | 1   |
| 35    | TOP BLADE                  | 1   |
| 34    | BOTTOM BLADE               | 1   |
| 33    | SUS SHEET COVER            | 1   |
| 32    | BUSHING                    | 1   |
| 31    | SHAFT                      | 1   |
| 30    | WASHER                     | 1   |
| 29    | BLADE HOLDER               | 1   |
| 28    | MILL CUP BOTTOM            | 1   |
| 27    | MILL CUP                   | 1   |
| 26    | FP BOWL HANDLE             | 1   |
| 25    | FP BOWL                    | 1   |
| 24    | FP INTERLOCK               | 1   |
| 23    | FP BOWL LID                | 1   |
| 22    | FP PUSHING                 | 1   |
| 21    | FP UPPER CLUTCH            | 1   |
| 20    | BUSHING HOUSING            | 1   |
| 19    | FP DRIVE HEAD              | 1   |
| 18    | FP V-SEALING               | 1   |
| 17    | FP BUSHING                 | 1   |
| 16    | FP WASHER                  | 1   |
| 15    | FP WAVE WASHER             | 1   |
| 14    | FP O-RING                  | 1   |
| 13    | METAL BLADE HOLDER         | 1   |
| 12    | DRIVE SHAFT STAINLESS DISC | 1   |
| 11    | SHREDDING                  | 1   |
| 10    | INSERT KNIFT ASSY          | 1   |
| 9     | INSERT PASPING             | 1   |
| 8     | PLASTIC INSERT HOLDER      | 1   |
| 7     | REAMER GEAR P(IN           | 1   |
| 6     | REAMER HEAD                | 1   |
| 5     | REAMER HEAD BUSHING        | 1   |
| 4     | REAMER GEAR CAP            | 1   |
| 3     | REAMER BASKET              | 1   |
| 2     | REAMER GEAR                | 1   |
| 1     | STAR NUT                   | 2   |
| PC NO | PART NAME                  | QTY |

Product Accessory explosive drawing

HR7951  
HR7954  
HR7958  
HR7955  
HR7950  
HR7974  
HR7978



Product main unit Explosive drawing

HR7951  
HR7954  
HR7958  
HR7955  
HR7950  
HR7974  
HR7978



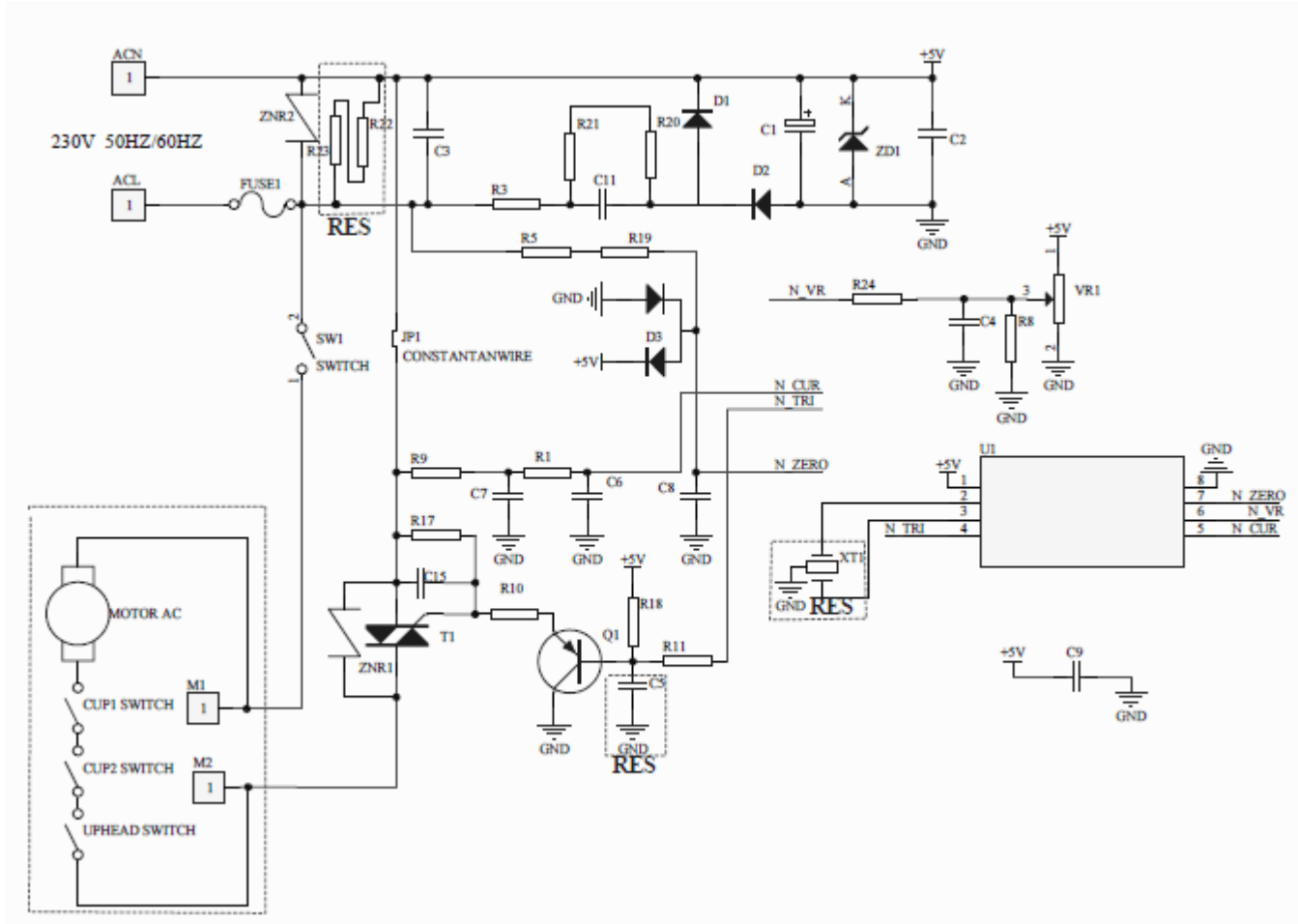
| EXPLODED VIEW LIST |          |                          |      |
|--------------------|----------|--------------------------|------|
| NO.                | ITEM NO. | ITEM NAME                | UNIT |
| 1                  | 1        | MAIN BODY                | 1    |
| 2                  | 2        | LID                      | 1    |
| 3                  | 3        | BASE                     | 1    |
| 4                  | 4        | MOTOR                    | 1    |
| 5                  | 5        | FAN                      | 1    |
| 6                  | 6        | LOCKING MECHANISM        | 1    |
| 7                  | 7        | HANDLE                   | 1    |
| 8                  | 8        | LID GASKET               | 1    |
| 9                  | 9        | BASE GASKET              | 1    |
| 10                 | 10       | MOTOR GASKET             | 1    |
| 11                 | 11       | FAN GASKET               | 1    |
| 12                 | 12       | LOCKING MECHANISM GASKET | 1    |
| 13                 | 13       | HANDLE GASKET            | 1    |
| 14                 | 14       | LID GASKET               | 1    |
| 15                 | 15       | BASE GASKET              | 1    |
| 16                 | 16       | MOTOR GASKET             | 1    |
| 17                 | 17       | FAN GASKET               | 1    |
| 18                 | 18       | LOCKING MECHANISM GASKET | 1    |
| 19                 | 19       | HANDLE GASKET            | 1    |
| 20                 | 20       | LID GASKET               | 1    |
| 21                 | 21       | BASE GASKET              | 1    |
| 22                 | 22       | MOTOR GASKET             | 1    |
| 23                 | 23       | FAN GASKET               | 1    |
| 24                 | 24       | LOCKING MECHANISM GASKET | 1    |
| 25                 | 25       | HANDLE GASKET            | 1    |
| 26                 | 26       | LID GASKET               | 1    |
| 27                 | 27       | BASE GASKET              | 1    |
| 28                 | 28       | MOTOR GASKET             | 1    |
| 29                 | 29       | FAN GASKET               | 1    |
| 30                 | 30       | LOCKING MECHANISM GASKET | 1    |
| 31                 | 31       | HANDLE GASKET            | 1    |
| 32                 | 32       | LID GASKET               | 1    |
| 33                 | 33       | BASE GASKET              | 1    |
| 34                 | 34       | MOTOR GASKET             | 1    |
| 35                 | 35       | FAN GASKET               | 1    |
| 36                 | 36       | LOCKING MECHANISM GASKET | 1    |
| 37                 | 37       | HANDLE GASKET            | 1    |
| 38                 | 38       | LID GASKET               | 1    |
| 39                 | 39       | BASE GASKET              | 1    |
| 40                 | 40       | MOTOR GASKET             | 1    |
| 41                 | 41       | FAN GASKET               | 1    |
| 42                 | 42       | LOCKING MECHANISM GASKET | 1    |
| 43                 | 43       | HANDLE GASKET            | 1    |
| 44                 | 44       | LID GASKET               | 1    |
| 45                 | 45       | BASE GASKET              | 1    |
| 46                 | 46       | MOTOR GASKET             | 1    |
| 47                 | 47       | FAN GASKET               | 1    |
| 48                 | 48       | LOCKING MECHANISM GASKET | 1    |
| 49                 | 49       | HANDLE GASKET            | 1    |
| 50                 | 50       | LID GASKET               | 1    |
| 51                 | 51       | BASE GASKET              | 1    |
| 52                 | 52       | MOTOR GASKET             | 1    |
| 53                 | 53       | FAN GASKET               | 1    |
| 54                 | 54       | LOCKING MECHANISM GASKET | 1    |
| 55                 | 55       | HANDLE GASKET            | 1    |
| 56                 | 56       | LID GASKET               | 1    |
| 57                 | 57       | BASE GASKET              | 1    |
| 58                 | 58       | MOTOR GASKET             | 1    |
| 59                 | 59       | FAN GASKET               | 1    |
| 60                 | 60       | LOCKING MECHANISM GASKET | 1    |
| 61                 | 61       | HANDLE GASKET            | 1    |
| 62                 | 62       | LID GASKET               | 1    |
| 63                 | 63       | BASE GASKET              | 1    |
| 64                 | 64       | MOTOR GASKET             | 1    |
| 65                 | 65       | FAN GASKET               | 1    |
| 66                 | 66       | LOCKING MECHANISM GASKET | 1    |
| 67                 | 67       | HANDLE GASKET            | 1    |
| 68                 | 68       | LID GASKET               | 1    |
| 69                 | 69       | BASE GASKET              | 1    |
| 70                 | 70       | MOTOR GASKET             | 1    |
| 71                 | 71       | FAN GASKET               | 1    |
| 72                 | 72       | LOCKING MECHANISM GASKET | 1    |
| 73                 | 73       | HANDLE GASKET            | 1    |
| 74                 | 74       | LID GASKET               | 1    |
| 75                 | 75       | BASE GASKET              | 1    |
| 76                 | 76       | MOTOR GASKET             | 1    |
| 77                 | 77       | FAN GASKET               | 1    |
| 78                 | 78       | LOCKING MECHANISM GASKET | 1    |

| NO. | ITEM NO. | ITEM NAME                | UNIT |
|-----|----------|--------------------------|------|
| 1   | 1        | MAIN BODY                | 1    |
| 2   | 2        | LID                      | 1    |
| 3   | 3        | BASE                     | 1    |
| 4   | 4        | MOTOR                    | 1    |
| 5   | 5        | FAN                      | 1    |
| 6   | 6        | LOCKING MECHANISM        | 1    |
| 7   | 7        | HANDLE                   | 1    |
| 8   | 8        | LID GASKET               | 1    |
| 9   | 9        | BASE GASKET              | 1    |
| 10  | 10       | MOTOR GASKET             | 1    |
| 11  | 11       | FAN GASKET               | 1    |
| 12  | 12       | LOCKING MECHANISM GASKET | 1    |
| 13  | 13       | HANDLE GASKET            | 1    |
| 14  | 14       | LID GASKET               | 1    |
| 15  | 15       | BASE GASKET              | 1    |
| 16  | 16       | MOTOR GASKET             | 1    |
| 17  | 17       | FAN GASKET               | 1    |
| 18  | 18       | LOCKING MECHANISM GASKET | 1    |
| 19  | 19       | HANDLE GASKET            | 1    |
| 20  | 20       | LID GASKET               | 1    |
| 21  | 21       | BASE GASKET              | 1    |
| 22  | 22       | MOTOR GASKET             | 1    |
| 23  | 23       | FAN GASKET               | 1    |
| 24  | 24       | LOCKING MECHANISM GASKET | 1    |
| 25  | 25       | HANDLE GASKET            | 1    |
| 26  | 26       | LID GASKET               | 1    |
| 27  | 27       | BASE GASKET              | 1    |
| 28  | 28       | MOTOR GASKET             | 1    |
| 29  | 29       | FAN GASKET               | 1    |
| 30  | 30       | LOCKING MECHANISM GASKET | 1    |
| 31  | 31       | HANDLE GASKET            | 1    |
| 32  | 32       | LID GASKET               | 1    |
| 33  | 33       | BASE GASKET              | 1    |
| 34  | 34       | MOTOR GASKET             | 1    |
| 35  | 35       | FAN GASKET               | 1    |
| 36  | 36       | LOCKING MECHANISM GASKET | 1    |
| 37  | 37       | HANDLE GASKET            | 1    |
| 38  | 38       | LID GASKET               | 1    |
| 39  | 39       | BASE GASKET              | 1    |
| 40  | 40       | MOTOR GASKET             | 1    |
| 41  | 41       | FAN GASKET               | 1    |
| 42  | 42       | LOCKING MECHANISM GASKET | 1    |
| 43  | 43       | HANDLE GASKET            | 1    |
| 44  | 44       | LID GASKET               | 1    |
| 45  | 45       | BASE GASKET              | 1    |
| 46  | 46       | MOTOR GASKET             | 1    |
| 47  | 47       | FAN GASKET               | 1    |
| 48  | 48       | LOCKING MECHANISM GASKET | 1    |
| 49  | 49       | HANDLE GASKET            | 1    |
| 50  | 50       | LID GASKET               | 1    |
| 51  | 51       | BASE GASKET              | 1    |
| 52  | 52       | MOTOR GASKET             | 1    |
| 53  | 53       | FAN GASKET               | 1    |
| 54  | 54       | LOCKING MECHANISM GASKET | 1    |
| 55  | 55       | HANDLE GASKET            | 1    |
| 56  | 56       | LID GASKET               | 1    |
| 57  | 57       | BASE GASKET              | 1    |
| 58  | 58       | MOTOR GASKET             | 1    |
| 59  | 59       | FAN GASKET               | 1    |
| 60  | 60       | LOCKING MECHANISM GASKET | 1    |
| 61  | 61       | HANDLE GASKET            | 1    |
| 62  | 62       | LID GASKET               | 1    |
| 63  | 63       | BASE GASKET              | 1    |
| 64  | 64       | MOTOR GASKET             | 1    |
| 65  | 65       | FAN GASKET               | 1    |
| 66  | 66       | LOCKING MECHANISM GASKET | 1    |
| 67  | 67       | HANDLE GASKET            | 1    |
| 68  | 68       | LID GASKET               | 1    |
| 69  | 69       | BASE GASKET              | 1    |
| 70  | 70       | MOTOR GASKET             | 1    |
| 71  | 71       | FAN GASKET               | 1    |
| 72  | 72       | LOCKING MECHANISM GASKET | 1    |
| 73  | 73       | HANDLE GASKET            | 1    |
| 74  | 74       | LID GASKET               | 1    |
| 75  | 75       | BASE GASKET              | 1    |
| 76  | 76       | MOTOR GASKET             | 1    |
| 77  | 77       | FAN GASKET               | 1    |
| 78  | 78       | LOCKING MECHANISM GASKET | 1    |

| NO. | ITEM NO. | ITEM NAME                | UNIT |
|-----|----------|--------------------------|------|
| 1   | 1        | MAIN BODY                | 1    |
| 2   | 2        | LID                      | 1    |
| 3   | 3        | BASE                     | 1    |
| 4   | 4        | MOTOR                    | 1    |
| 5   | 5        | FAN                      | 1    |
| 6   | 6        | LOCKING MECHANISM        | 1    |
| 7   | 7        | HANDLE                   | 1    |
| 8   | 8        | LID GASKET               | 1    |
| 9   | 9        | BASE GASKET              | 1    |
| 10  | 10       | MOTOR GASKET             | 1    |
| 11  | 11       | FAN GASKET               | 1    |
| 12  | 12       | LOCKING MECHANISM GASKET | 1    |
| 13  | 13       | HANDLE GASKET            | 1    |
| 14  | 14       | LID GASKET               | 1    |
| 15  | 15       | BASE GASKET              | 1    |
| 16  | 16       | MOTOR GASKET             | 1    |
| 17  | 17       | FAN GASKET               | 1    |
| 18  | 18       | LOCKING MECHANISM GASKET | 1    |
| 19  | 19       | HANDLE GASKET            | 1    |
| 20  | 20       | LID GASKET               | 1    |
| 21  | 21       | BASE GASKET              | 1    |
| 22  | 22       | MOTOR GASKET             | 1    |
| 23  | 23       | FAN GASKET               | 1    |
| 24  | 24       | LOCKING MECHANISM GASKET | 1    |
| 25  | 25       | HANDLE GASKET            | 1    |
| 26  | 26       | LID GASKET               | 1    |
| 27  | 27       | BASE GASKET              | 1    |
| 28  | 28       | MOTOR GASKET             | 1    |
| 29  | 29       | FAN GASKET               | 1    |
| 30  | 30       | LOCKING MECHANISM GASKET | 1    |
| 31  | 31       | HANDLE GASKET            | 1    |
| 32  | 32       | LID GASKET               | 1    |
| 33  | 33       | BASE GASKET              | 1    |
| 34  | 34       | MOTOR GASKET             | 1    |
| 35  | 35       | FAN GASKET               | 1    |
| 36  | 36       | LOCKING MECHANISM GASKET | 1    |
| 37  | 37       | HANDLE GASKET            | 1    |
| 38  | 38       | LID GASKET               | 1    |
| 39  | 39       | BASE GASKET              | 1    |
| 40  | 40       | MOTOR GASKET             | 1    |
| 41  | 41       | FAN GASKET               | 1    |
| 42  | 42       | LOCKING MECHANISM GASKET | 1    |
| 43  | 43       | HANDLE GASKET            | 1    |
| 44  | 44       | LID GASKET               | 1    |
| 45  | 45       | BASE GASKET              | 1    |
| 46  | 46       | MOTOR GASKET             | 1    |
| 47  | 47       | FAN GASKET               | 1    |
| 48  | 48       | LOCKING MECHANISM GASKET | 1    |
| 49  | 49       | HANDLE GASKET            | 1    |
| 50  | 50       | LID GASKET               | 1    |
| 51  | 51       | BASE GASKET              | 1    |
| 52  | 52       | MOTOR GASKET             | 1    |
| 53  | 53       | FAN GASKET               | 1    |
| 54  | 54       | LOCKING MECHANISM GASKET | 1    |
| 55  | 55       | HANDLE GASKET            | 1    |
| 56  | 56       | LID GASKET               | 1    |
| 57  | 57       | BASE GASKET              | 1    |
| 58  | 58       | MOTOR GASKET             | 1    |
| 59  | 59       | FAN GASKET               | 1    |
| 60  | 60       | LOCKING MECHANISM GASKET | 1    |
| 61  | 61       | HANDLE GASKET            | 1    |
| 62  | 62       | LID GASKET               | 1    |
| 63  | 63       | BASE GASKET              | 1    |
| 64  | 64       | MOTOR GASKET             | 1    |
| 65  | 65       | FAN GASKET               | 1    |
| 66  | 66       | LOCKING MECHANISM GASKET | 1    |
| 67  | 67       | HANDLE GASKET            | 1    |
| 68  | 68       | LID GASKET               | 1    |
| 69  | 69       | BASE GASKET              | 1    |
| 70  | 70       | MOTOR GASKET             | 1    |
| 71  | 71       | FAN GASKET               | 1    |
| 72  | 72       | LOCKING MECHANISM GASKET | 1    |
| 73  | 73       | HANDLE GASKET            | 1    |
| 74  | 74       | LID GASKET               | 1    |
| 75  | 75       | BASE GASKET              | 1    |
| 76  | 76       | MOTOR GASKET             | 1    |
| 77  | 77       | FAN GASKET               | 1    |
| 78  | 78       | LOCKING MECHANISM GASKET | 1    |

circuit diagram

HR7951  
HR7954  
HR7958  
HR7950  
HR7955  
HR7974  
HR7978



Revision

Version A : initial release---wk1422

Version B: change PCBA version1 from 996510070478 to version2 996510071344.  
change Motor 12NC as below:

| Model  | From         | To           |
|--------|--------------|--------------|
| HR7958 | 996510070482 | 996510071347 |
| HR7951 | 996510070631 | 996510071345 |
| HR7954 | 996510070484 | 996510071346 |

---wk1438

Version C: add three new model : HR7978/7955/7950 into service manual. Change HR7958 'rotated shaft & spring assy' from996510070503 to 996510072101 .----wk1450

Version D: add one new model HR7974 into service manual.----WK1502

Version E: add Juicer assy (#68) picture into service manual----wk1506

Version F: set Juicer Assy(#68) as Accessory which composes of #71 ~ #77-----WK1510

Version G: delete #68 (996510072791) Juicer Assy in part list. add #78 MM hopper holder into partlist. Change #71/72/73/74/76 12NC due to the new factory code. ----WK1512

|    | From         | To           |                      |
|----|--------------|--------------|----------------------|
| 71 | 996510057678 | 996510073187 | PUSHER               |
| 72 | 996510059059 | 996510073189 | HOPPER REAR          |
| 73 | 996510059058 | 996510073185 | WORM SHAFT+ COUPLING |
| 74 | 996510057682 | 996510073188 | ADJUSTING SCREW      |
| 76 | 996510057675 | 996510073186 | SEALING RING         |

HR7951  
HR7954  
HR7958  
HR7950  
HR7955  
HR7974  
HR7978