

Service
Service
Service



Philips Consumer Life Style

HR7951
HR7952
HR7954
HR7958
HR7950
HR7955
HR7974
HR7978
HR7932
HR7934

Service Manual

PRODUCT INFORMATION

Features

- Color(s): White
- Housing material: ABS
- Beater tools: Metal
- Material bowl: Stainless steel

TECHNICAL INFORMATION

- Power : 900 W
- Frequency : 50 / 60 Hz
- Speed : 16500r/min
- Power cord set length : 1.1 m
- Product size:
- Length : 330 mm
- Width : 584 mm
- Height : 360 mm
- Weight(no packaging) : 6.27kg for HR7954
- Material of main unit : plastic

Accessories included

- 1.25L blender jar
- 4star removable blender blade set
- Food processor (HR7932) for HR7954/HR7958/HR7974/HR7952/HR7978
- Meat mincer (HR7934) for HR7958/HR7978/HR7974
- Juicer Assy (for HR7974)

SAFETY

- This product meets the requirements regarding interference suppression on radio and TV.
- After the product has been repaired, it should function properly and has to meet the safety requirements as officially laid down at this moment.

Parts list

Pos	12NC	Description	Remark	CRP
1	996510070499	Beater	HR7951/50/54/55/58/78/74/52	Y
2	996510070504	Hook	HR7951/50/54/55/58/78/74/52	Y
3	996510070516	Drive Shaft	HR7954/58/78/74/52/32	Y
4	996510070517	S-blade	HR7954/58/78/74/52/32	Y
5	996510070526	Shredder Disc Holder	HR7954/58/78/74/52/32	Y
6	996510070521	Julienne Disc	HR7954/58/78/52/32	Y
6	996510072784	Julienne Disc	HR7974	Y
7	996510070513	Pasping Disc	HR7954/58/78/74/52/32	Y
8	996510070515	Slicer_Shredder Disc	HR7954/58/78/74/52/32	Y
9	996510074297	FP Pusher	HR7954/58/78/74/52/32	Y
10	996510070523	Cone & Sleeve	HR7954/58/78/74/32	Y
11	996510070479	Filler Cap	HR7954/51/58/78/74/52	Y
12	996510070501	Blade Holder & seal ring	HR7954/51/58/78/74/52	Y
13	996510070508	Jar and Jar Lid	HR7954/51/58/52	Y
13	996510072102	Jar and Jar Lid	HR7978/74	Y
14	996510075338	Bowl and Bowl Lid (SUS)	HR7954/58/52	Y
14	996510075321	Bowl and Bowl Lid (SUS)	HR7978/74	Y
14	996510075342	Bowl and Bowl Lid (SUS)	HR7932	
15	996510070505	SUS Bowl Cover	HR7951/50/54/55/58/78/74/52	Y
16	996510070473	Whisk	HR7954/51/58/50/55/52	Y
16	996510072106	Whisk Grey	HR7978/74	Y
17	996510070476	SUS Bowl	HR7951/50/54/55/58/78/74/52	Y
18	996510070528	Mill Cup & Bottom	HR7958/78/74	
19	996510070507	Link Rubber Foot(yellow)	HR7954/52	
19	996510070634	Link Rubber Foot(grey)	HR7951/58/50/55/78/74	
20	996510070503	Rotated Shaft & Spring Assy.	HR7954/51/50/52	
20	996510072101	Rotated Shaft & Spring Assy.	HR7958/55/78/74	

Parts list

21	996510071344	PCBA	HR7954/51/58/78/50/74/55/52	
21	996510072118	PCBA CHINA	HR7955	
22	996510070489	MM Cover	HR7958/78/74	
23	996510070502	FP Cover	HR7951/50/54/55/58/78/74	
24	996510070481	Blender Cover	HR7951/50/54/55/58/78/74	
25	996510070494	Base	HR7954/51/58/50/55/52	
25	996510072109	Base	HR7978	
25	996510072797	Base	HR7974	
26	996510070485	Damping Assy.	HR7951/50/54/55/58/78/74/52	
27	996510070469	Release Shaft & Spring Assy.	HR7951/50/54/55/58/78/74/52	
28	996510070495	Rise Support	HR7951/50/54/55/58/78/74/52	
29	996510070475	Switch Support	HR7951/50/54/55/58/78/74/52	
30	996510070472	Safety Lever	HR7958/55	
30	996510072113	Safety Lever	HR7978	
30	996510072789	Safety Lever	HR7974	
31	996510070496	FP Interlock Pin	HR7958/55	
31	996510072105	FP Interlock Pin	HR7978	
31	996510072793	FP Interlock Pin	HR7974	
32	996510070488	Main Housing Cover	HR7958/55	
32	996510072112	Main Housing Cover Black 7C	HR7978	
32	996510072798	Main Housing Cover	HR7974	
33	996510070467	Rubber Foot(yellow)	HR7954/52	
33	996510070632	Rubber Foot (grey)	HR7951/58/55/50/78/74	
34	996510070498	Base Cover(yellow)	HR7954/52	
34	996510070633	Base Cover (grey)	HR7951/58/50/55/78/74	
35	996510070493	Blender Lower Coupling	HR7958/55/78/74	
36	996510070477	FP Lower Coupling	HR7958/55/78/74	
37	996510070497	Speed Knob	HR7951/50/54/55/58/78/74/52	
38	996510070487	Lock Knob	HR7951/50/54/55/58/78/74/52	
39	996510074867	Motor, gear box & shaft Assy.	HR7958/78/74/55	
40	996510070465	Wind Wall	HR7951/50/54/55/58/78/74/52	
41	996510070471	Power Cord	HR7954/51/58/50/55/52(WE version)	
41	996510072122	Power Cord MEA	HR7955	
41	996510072119	Power Cord CHINA	HR7954/51/58/50/78(MEA version)	
41	996510072103	Power Cord Black	HR7978/74 WEU	

Parts list

Pos	12NC	Description	Remark	CRP
42	996510070474	Main Housing	HR7958/55	
42	996510072116	Main Housing	HR7978	
42	996510072795	Main Housing	HR7974	
43	996510070466	Motor Bracket	HR7958/55/78/74	
44	996510070492	Rise Cover	HR7958/55	
44	996510072111	Rise Cover BLACK 7C	HR7978	
44	996510072794	Rise Cover	HR7974	
45	996510070468	Micro Switch	HR7951/50/54/55/58/78/74/52	
46	996510070514	Pusher	HR7958/34	Y
46	996510072115	PUSHER GREY	HR7978/74	Y
47	996510070522	Food Tray & Cover	HR7958/78/74/34	Y
48	996510070519	Grinder Chamber	HR7958/78/74/34	Y
49	996510074866	Coupling & Seal Ring	HR7958/78/74/34	Y
50	996510070527	Worm Shaft	HR7958/78/74/34	Y
51	996510070524	Cutting Blade	HR7958/78/74/34	Y
52	996510070525	Grinding Disc	HR7958/78/74/34	Y
53	996510070518	Worm Screw	HR7958/78/74/34	Y
55	996510071346	Main Housing, Gear box, Shaft & Motor Assy.	HR7954/52	
55	996510071345	Main Housing, Gear box, Shaft & Motor Assy.	H7951	
55	996510074868	Motor ccc, Gear box shaft & Motor assy, CHINA	HR7955 CHINA	
56	996510070483	screw cover 1#	HR7958/55	
57	996510070506	screw cover 2#	HR7958/55	
58	996510070486	screw cover 3#	HR7958/55	
59	996510070491	screw cover 4#	HR7958/55	
60	996510072108	Screw cover 1# black 7c	HR7978	
61	996510072117	Screw cover 2# black 7c	HR7978	
62	996510072107	Screw cover 3# black 7c	HR7978	
63	996510072104	Screw cover 4# black 7c	HR7978	
64	996510072796	screw cover 1#	HR7974	
65	996510072785	screw cover 2#	HR7974	
66	996510072787	screw cover 3#	HR7974	
67	996510072788	screw cover 4#	HR7974	
69	996510072786	Fine slicing disk ass	HR7974	
70	996510072792	Coarse slicing ass	HR7974	
71	996510073187	PUSHER GREY	HR7974	Y
72	996510073189	HOPPER REAR GREY	HR7974	Y
73	996510073185	WORM SHAFT+ COUPLING	HR7974	Y
74	996510073188	ADJUSTING SCREW	HR7974	Y
75	996510057676	SCREEN	HR7995/HR7974	Y
76	996510073186	SEALING RING	HR7974	Y
77	996510057683	HOPPER FRONT	HR7995/HR7974	Y
78	996510073184	MM HOPPER HOLDER	HR7958/78/74	Y

Part List view

1



2



3



4



5



6



7



8



9



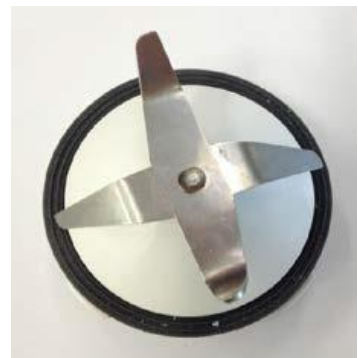
10



11



12



Part List view

13



14



15



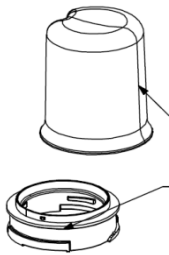
16



17



18



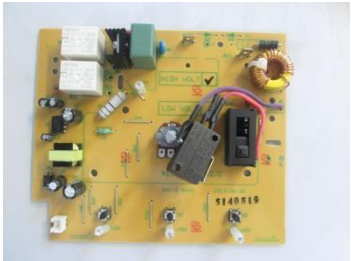
19



20



21



22



23



24



25



26



27



Part List view

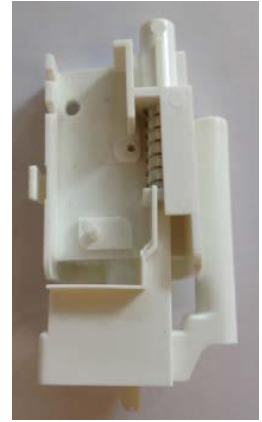
28



29



30



31



32



33



Part List view

34



35



36



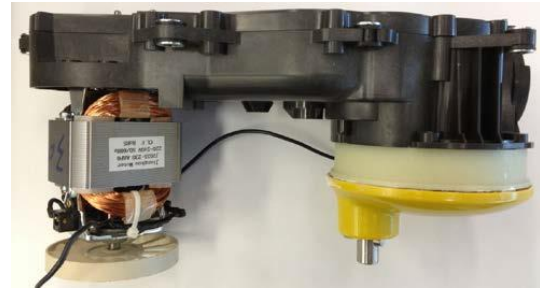
37



38



39



40



41

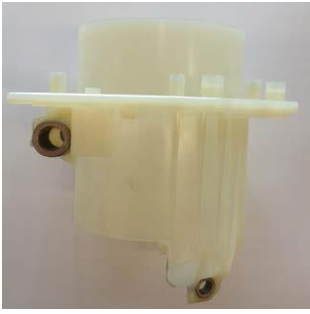


42



Part List view

43



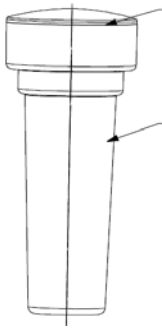
44



45



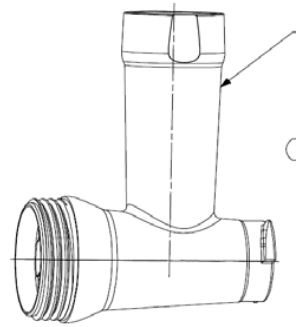
46



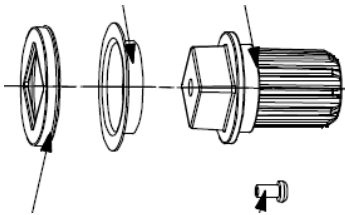
47



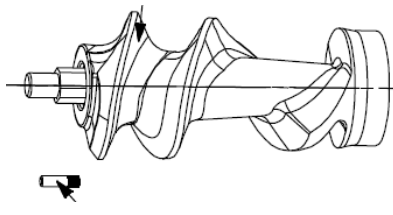
48



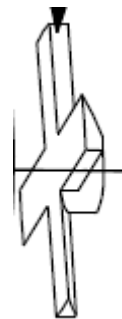
49



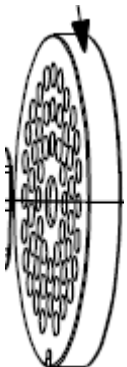
50



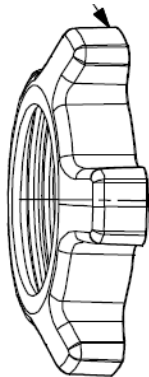
51



52



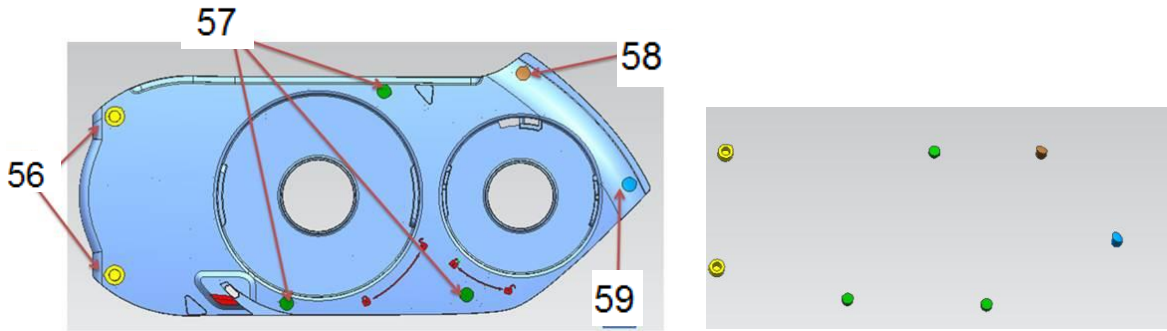
53



55



Part List view



69



71



72



73



74



75



76



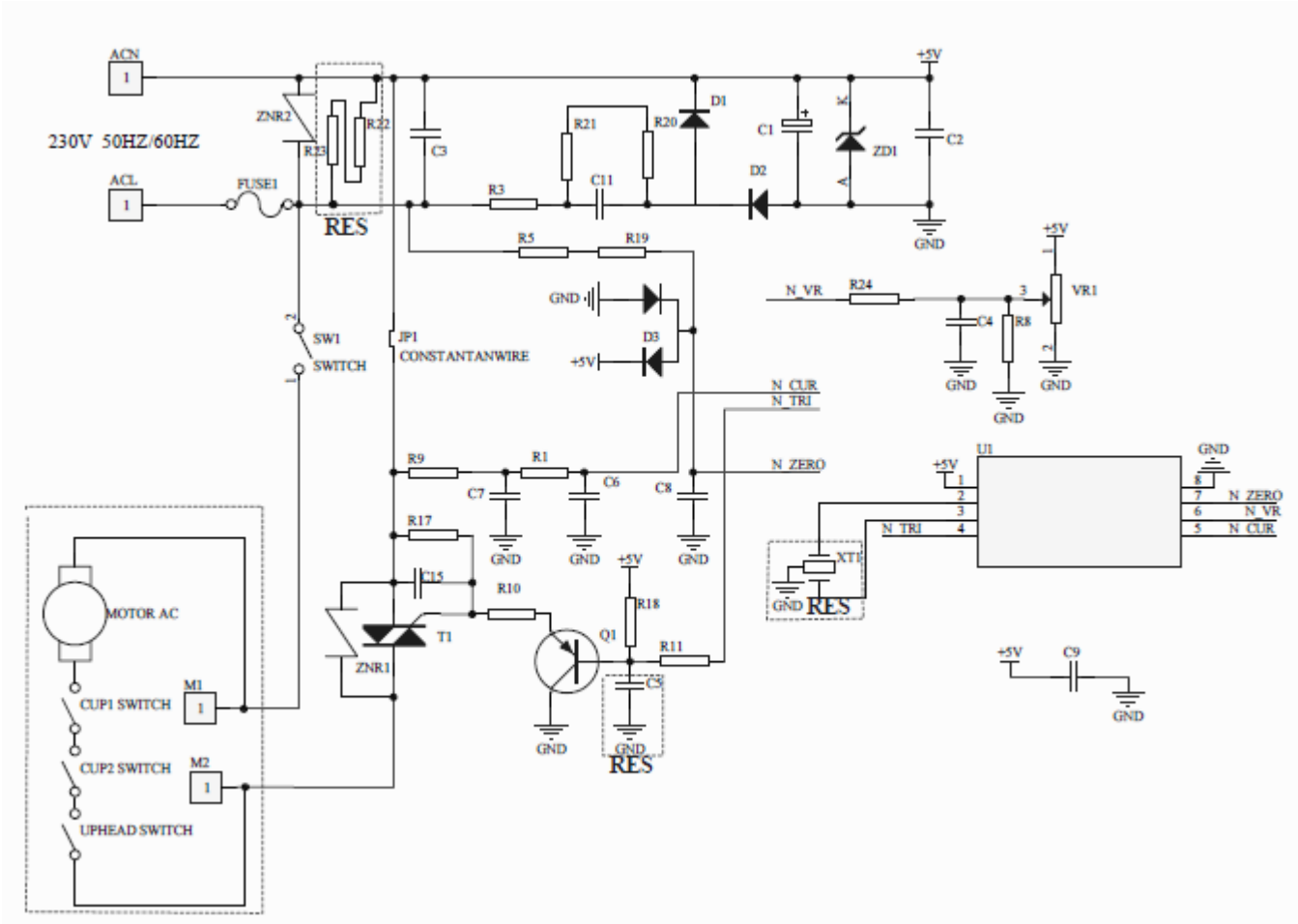
77



78



circuit diagram



HR7951
 HR7952
 HR7954
 HR7958
 HR7950
 HR7955
 HR7974
 HR7978

Revision

Version A : initial release---wk1422

Version B: change PCBA version1 from 996510070478 to version2 996510071344.

change Motor 12NC as below:

Model	From	To
HR7958	996510070482	996510071347
HR7951	996510070631	996510071345
HR7954	996510070484	996510071346

---wk1438

Version C: add three new model : HR7978/7955/7950 into service manual. Change HR7958 'rotated shaft & spring assy' from996510070503 to 996510072101 .----wk1450

Version D: add one new model HR7974 into service manual.----WK1502

Version E: add Juicer assy (#68) picture into service manual----wk1506

Version F: set Juicer Assy(#68) as Accessory which composes of #71 ~ #77-----WK1510

Version G: delete #68 (996510072791) Juicer Assy in part list. add #78 MM hopper holder into partlist. Change #71/72/73/74/76 12NC due to the new factory code. ----WK1512

	From	To	
71	996510057678	996510073187	PUSHER
72	996510059059	996510073189	HOPPER REAR
73	996510059058	996510073185	WORM SHAFT+ COUPLING
74	996510057682	996510073188	ADJUSTING SCREW
76	996510057675	996510073186	SEALING RING

Version H: add new model HR7952 into SM.

----WK1536

Version I: change FP Pusher from 996510070511 to 996510074297 ; Bowl & Bowl lid from 996510070509 to 996510074299 ; from 996510072114 to 996510074298 ----WK1539

Version J: Change MOTOR GEAR BOX SHAFT ASSY from 996510071347 to 996510074867; from 996510072121 to 996510074868 TCP -6595.

Change COULPING AND SEAL RING from 996510070512 to 996510074866

TCP- 6573

----WK1548

Version K: Add two Accessories HR7934(Meat Mincer) & HR7932(Food processor) into SM.

-----WK1551

Version L: Change Bowl & Bowl lid from old 12NC 996510074299, 996510074298 to 996510075338, 996510075321, 996510075342 for the washer material change from carbon steel to SUS based on TCP6815.

-----WK1615.