



Philips Domestic Appliances and Personal Care

Service Manual

PRODUCT INFORMATION

- This product meets the requirements regarding interference suppression on radio and TV.
- After the product has been repaired, it should function properly and has to meet the safety requirements as officially laid down at this moment.

TECHNICAL INFORMATION

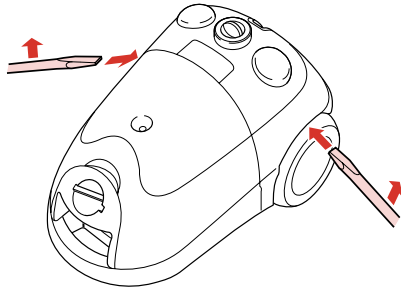
- Colour /A : Red
- /D : Blue berry purple
- Maximum air displacement : 32 l/sec.
- Maximum vacuum water column : 240 cm
- Power consumption (IEC) : 1200 W
- Duststorage capacity : 3 litres
- Cord length (depends on version) : 6 metres
- Filter system : Paper dustbag
- : Motor inlet filter
- : Exhaust air filter
- Dimensions cleaner : 445 x 295 x 250 mm
- Weight cleaner : 5.5 kg

OPTIONAL (accessories)

- | | |
|------------------------------------|-------------------------|
| Exhaust air filter | FC8032 = 4822 015 70056 |
| Active carbon filter | FC8033 = 4822 480 20145 |
| Active carbon filter replacem. set | FC8034 = item 12 + 13 |
| S-class filter | FC8044 = 8838 044 01010 |
| S-class filter replacement set | HR6994 = item 19 + 20 |
| Sydney cotton dustbag | HR6997 = 4822 480 10115 |
| Sydney closable paper dustbag | FC8021 = 8838 021 00000 |
| Turbo brush | FC8043 = 4822 479 20196 |

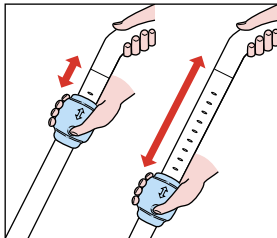
DISASSEMBLY- AND RE-ASSEMBLY ADVISE

- To open the appliance, first remove the 2 screws of the control panel (**item 11**) then with a big screw driver disconnect the 2 snap locks of panel and lower housing (see drawing).



- The component configuration shown in the exploded view may differ in case of specific versions. The components are distinguished by means of code numbers.
- When the repair is finished, check whether all functions of the appliance work properly.
- To (dis)assemble the appliance use TORX screw driver no T15 (4822 395 10329), which is one of a set consisting of T20, T15, T10, T9, T8, T7 and T6 = 4822 395 50145.
- To connect the nozzle, the telescopic tube and the handle: insert the narrowed section into the wider section while turning it a little.

To disconnect: Pull while rotating. To adjust the telescopic tube (**item 74**) to the required length, use the knob in the direction of the arrow while sliding the top section of the telescopic tube into or out of the lower section.

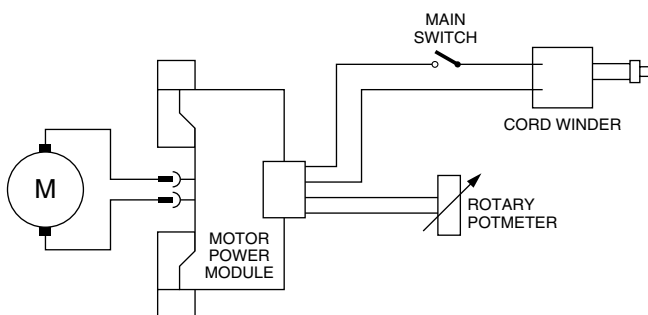


REPAIR INSTRUCTION

- The spare parts have been standardized as much as possible.
- **Item 6**, cotton dustbag, is used in those countries where paper dustbags are not available.
- The cordwinder (**item 21**) is provided with a long cord-winder spring; both long and short cords can be used in combination with this spring.
- The cord winder spring must be tensioned to the maximum level and then be rewound approx. 1.5 turn.
- Depending on the original cord, the spare cord must be shortened to the length of the original cord.
- If the cord comes without AMP clamps, it can be soldered onto the terminals.
- If the reel half spring unit is replaced, shaft **A** must be lubricated with **silicone grease (A)**. Do not apply any silicone grease to or spill any grease on the terminals or conductors.
- The assembly of accessories depends on the national version.
- Adjusting the PCB on the motor to 220V, 60Hz.
 1. Make sure that the potentiometer (**item 36**) is set at min. position.
 2. Adjust the potentiometer on the PCB **item 45**, on the motor to 220V/60Hz to allow the motor to run smoothly.

Please note: the standard setting of the spare PCB is 230V/50Hz.

There are open-circuit voltages on all wires.




PARTS LIST

HR8572 /A /D

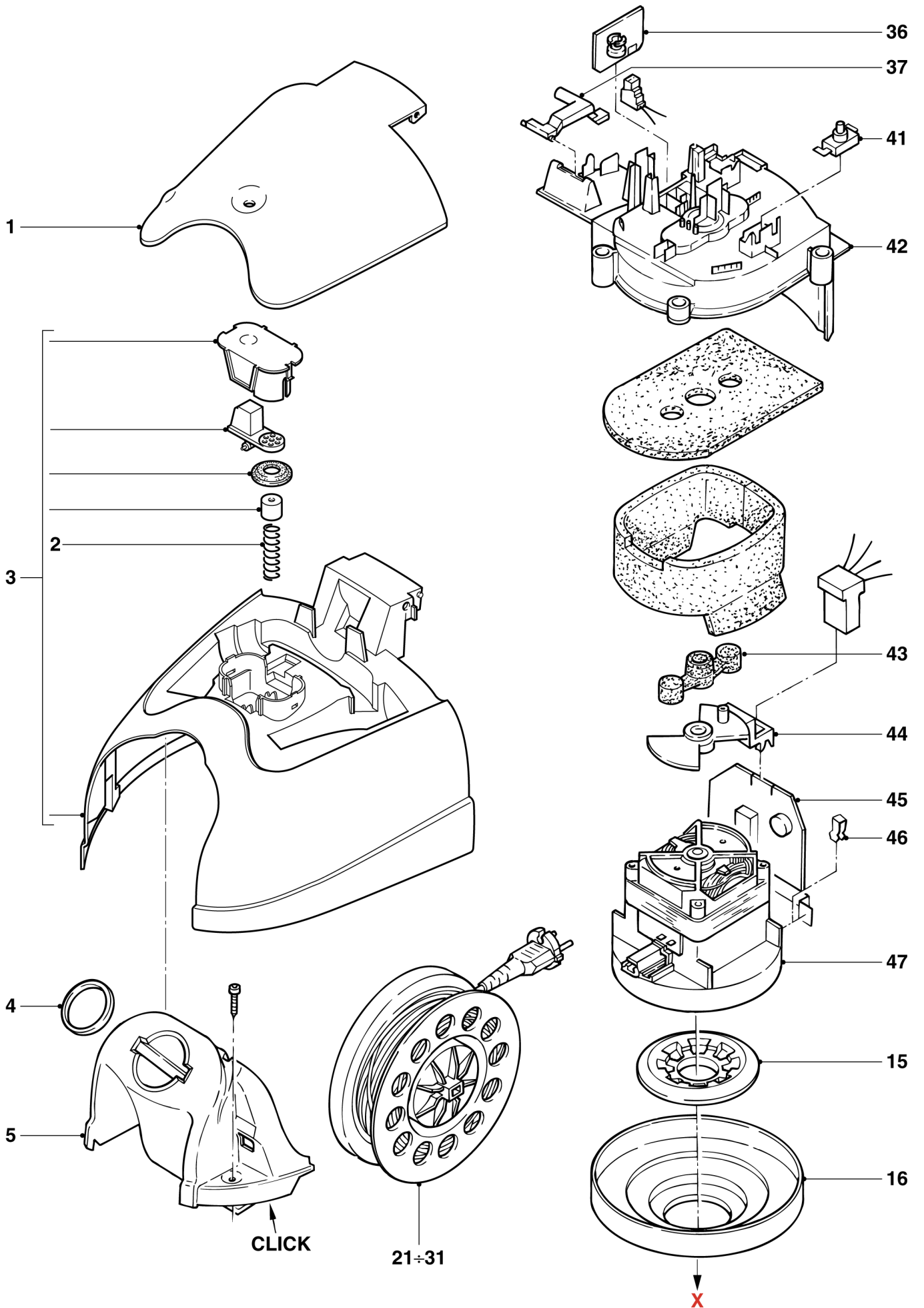
Pos	Service code	Description	Version
1	4322 005 14870	Acc. cover	/A
	4322 003 14530	Acc. cover	/D
2	4822 492 11408	Dust indicator spring	
3	4322 009 08700	Dust panel	/A
	4322 009 09130	Dust panel	/D
4	4822 532 60926	Packing ring	
5	4322 003 19220	Front cover	/A
	4322 003 13460	Front cover	/D
6	8838 021 00000	Sydney closable pap. dustbag	
	4822 480 10115	Sydney cotton dustbag	(opt.)
7	4822 256 10354	Dustbag carrier	
8	4822 401 11689	Clamp of dustbag carrier	
9	4822 466 11497	Dust compartment sealing	
10	4322 005 14860	Turn knob	/A
	4322 005 10980	Turn knob	/D
11	4322 003 19250	Back panel	/A
	4322 003 13440	Back panel	/D
12	4822 458 10649	Inletgrill + trio filter	
	4822 458 10461	Active carbon filter grill	(opt.)
13	4822 480 10228	Trio filter	
	4822 480 20145	Active carbon filter	(opt.)
14	4322 003 19260	Pedal	/A
	4322 003 14570	Pedal	/D
15	4822 466 62655	Bufferring motor	
16	4822 466 11487	Motor disc	
17	4322 003 12510	Cord out let	
18	4822 441 12341	Lower housing + wheels	
19	4822 015 70056	Exhaust air filter	
	8838 044 01010	S-filter	/D
20	4322 009 06910	Air outlet grill	
	4322 005 15970	S-filter grill	/D
21	4322 009 07940	Reel half spring unit (L=9m)	
23	4322 001 72360	Brake tyre	
24	4322 009 07950	Reel half contact unit	
25	4322 009 07960	Contact ring plate	

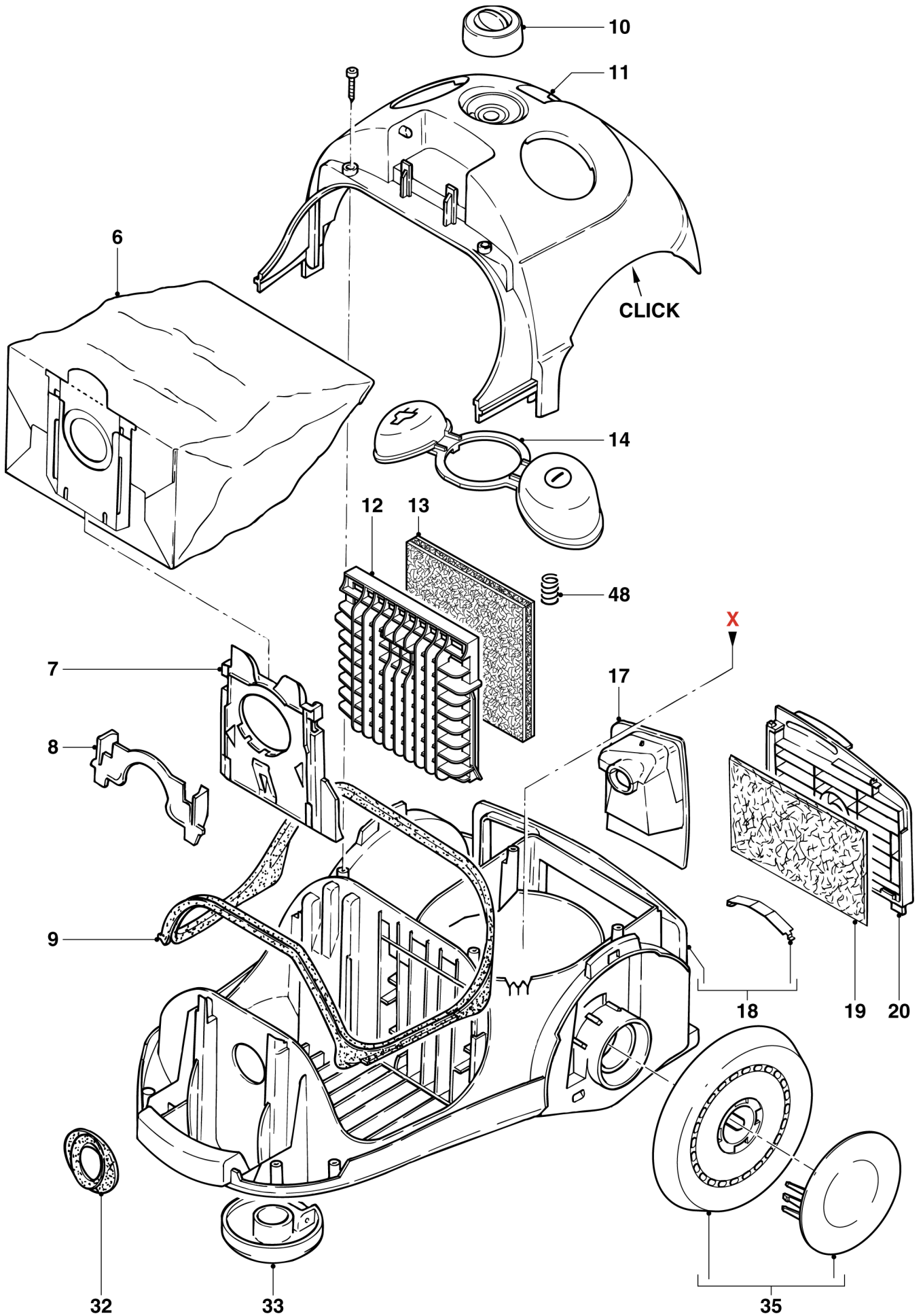
Pos	Service code	Description	Version
26	4322 006 01440	Cord set Argentina	L=9.3 m
	4322 006 01760	Cord set Australia	L=9.3 m
27	4322 006 01680	Cord set Taiwan	L=6.3 m
28	4322 006 01720	Cord set U.K. / H.K.	L=9.3 m
29	4322 006 01400	Cord set Euro 4.8mm pins	L=6.3 m
30	4322 006 02080	Cord set Swiss	L=6.3 m
31	4322 006 01460	Cord set Italy	L=9.3 m
32	4822 532 12782	Dustbag sealing	
33	4822 528 11334	Caster	
35	4322 009 06710	Rearwheel (standard)	
36	4822 214 12224	Speed control 220-240V	
37	4822 479 20197	Cord winder lever	
41	4822 276 13205	Push button switch	
42	4822 462 10911	Motor cover	
43	4822 466 10765	Rear motor buffer	
44	4822 402 10109	Suspension bracket	
45	4822 214 11359	Motor power PCB 230V-50Hz	
46	4822 492 11011	PCB clamp	
47	9965 000 30023	Motor 220-240V/50-60Hz	
48	4822 492 11407	Spring switch-knob	
71	4822 492 71622	Clip metal tube	(opt.)
72	4822 530 10229	Metal tube	(opt.)
73	4322 003 20730	Clip telescopic tube	
74	4322 004 22990	Telescopic tube	
75	4822 530 10382	Bend + hose ass'y	
76	4822 530 10235	Bend ass'y	
77	4822 479 20195	Crevice nozzle	
78	4822 479 60118	Small nozzle	
79	4822 479 70072	Big nozzle	
80	4822 479 20123	Strip of big nozzle	
81	4822 479 30176	Plumeau	
85	4822 479 20196	Turbo brush complete	
A	5322 390 20011	Silicon grease for the shaft	
B	4322 002 82550	Screw 3.5 x 12 / T10	

 = changed

EXPLODED VIEW

HR8572 /A /D





EXPLODED VIEW

HR8572 /A /D

