



Philips Consumer Lifestyle

# Service Manual

## PRODUCT INFORMATION

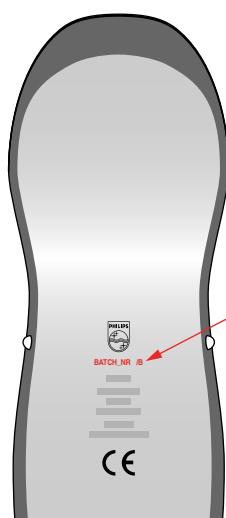
### General:

- Rechargeable
- World-wide automatic voltage selection
- Washable

### Safety information

- This product meets the requirements regarding interference suppression on radio and TV.
- After the product has been repaired, it should function properly and has to meet the safety requirements as officially laid down at this moment.

### Place of production date



BATCH\_NR /B 510505017  
↓  
1050  
YYWW

## TECHNICAL INFORMATION

- Voltage : 100 - 240 V / 50 - 60 Hz
- Shaving heads : RQ11
- Battery type : Li-ion
- Running time : up to 40 min
- Stand-by power : 0,15 W
- Max power consumption : 5,4 W
- SAP coding : RQ1167

## DISASSEMBLY- AND RE-ASSEMBLY ADVICE

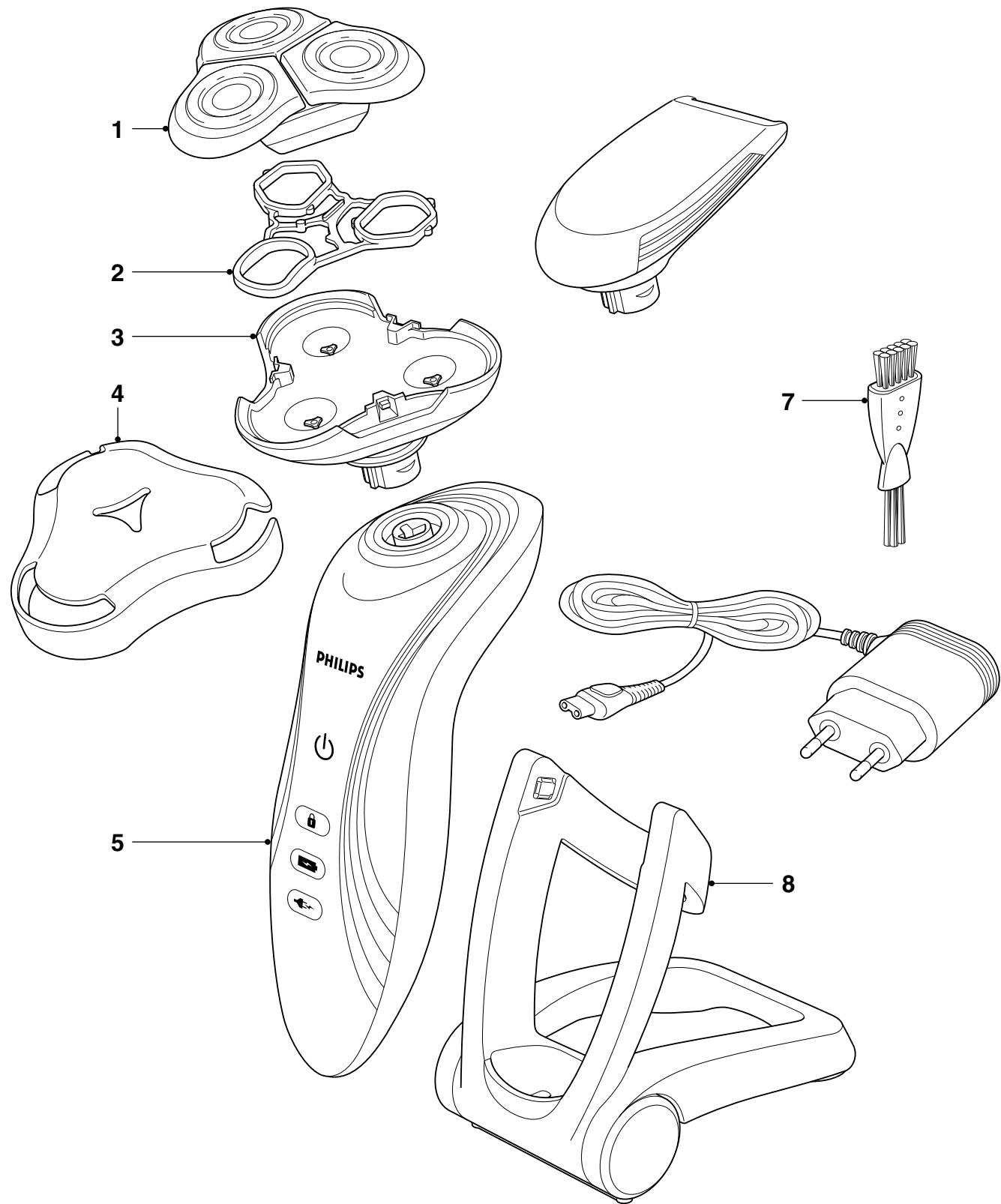
- No specific issues

## REPAIR INSTRUCTION


- No specific issues

## OPTIONAL (accessories)

- 4222 039 29581 Styler
- 4222 039 21841 Trimmer
- 4222 018 58971 Pouch



Pos	Service code	Description
1	4222 036 18481	Shaving unit upper part
2	4222 036 17531	Holder
3	4222 036 17551	Shaving unit bottom assy
4	4222 027 21541	Protecting cap

 = changed

Pos	Service code	Description
5	4222 036 23381	Body JAP
5	<b>4222 036 23741</b>	<b>Body EU</b>
7	4222 029 31341	Brush
8	4222 039 28711	Stand
	4222 036 21911	Power plug JAP/USA/CA