

Service
Service
Service



Philips Consumer Lifestyle

Service Manual

PRODUCT INFORMATION

General:

- Rechargeable
- World-wide automatic voltage selection
- Washable
- Wet & dry use (gel)

Safety information

- This product meets the requirements regarding interference suppression on radio and TV.
- After the product has been repaired, it should function properly and has to meet the safety requirements as officially laid down at this moment.

TECHNICAL INFORMATION

- Voltage : 100 - 240 V / 50 - 60 Hz
- Shaving heads : RQ12
- SAP coding : RQ1290
- Battery type : Li-ion
- Run time : up to 60 min
- Stand-by power : 0,15 W
- Max power consumption : 5,4 W

DISASSEMBLY- AND RE-ASSEMBLY ADVICE

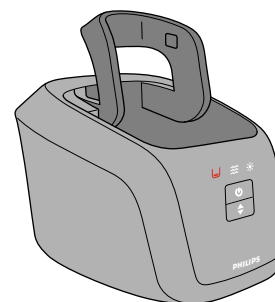
- No specific issues

REPAIR INSTRUCTIONS

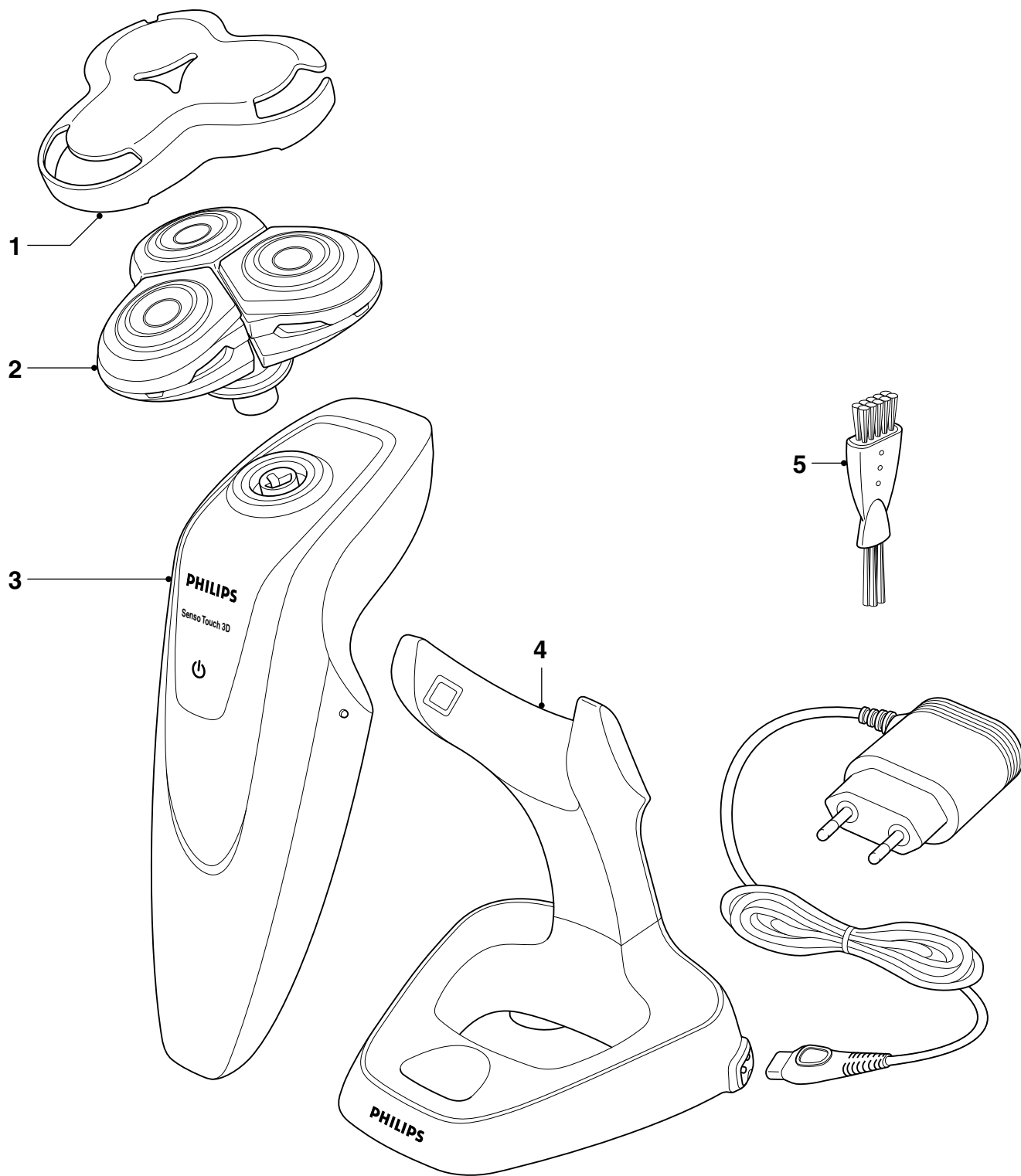
- No specific issues

OPTIONAL (accessories)

- 4222 018 57731 Pouch HE/ME
- 4222 039 21341 Jetclean 4



- 2722 171 90065 Power plug Europe
- 2722 171 90075 Power plug USA,CA,TW,MEX,JAP
- 2722 171 90086 Power plug Australia/New Zealand
- 2722 171 90067 Power plug United Kingdom
- 2722 171 90071 Power plug Korea
- 2722 171 90084 Power plug PRC
- 2722 171 90088 Power plug Argentina
- 2722 171 90073 Power plug Brasil



Pos	Service code	Description
1	4222 027 21021	Protecting cap
2	4222 036 17631	Shaving unit
3	4222 036 17621	Body RQ1290
4	4222 039 21371	Charging stand
5	4222 036 02770	Brush