

Service  
Service  
Service



Philips Consumer Lifestyle

# Service Manual

**Product information**

**Service scenario:**

- Repair
- Parts exchange

**General:**

- Rechargeable
- World-wide automatic voltage selection
- Washable
- Wet & dry use (gel)

**Safety information**

- This product meets the requirements regarding interference suppression on radio and TV.

**Technical information**

- Voltage : 100 - 240 V / 50 - 60 Hz
- Shaving heads : SH90
- Battery type : Li-ion
- Run time : up to 50 min
- Stand-by power : 0,1 W
- Max power consumption : 9 W
- SAP coding : S9511

**Optional (accessories)**

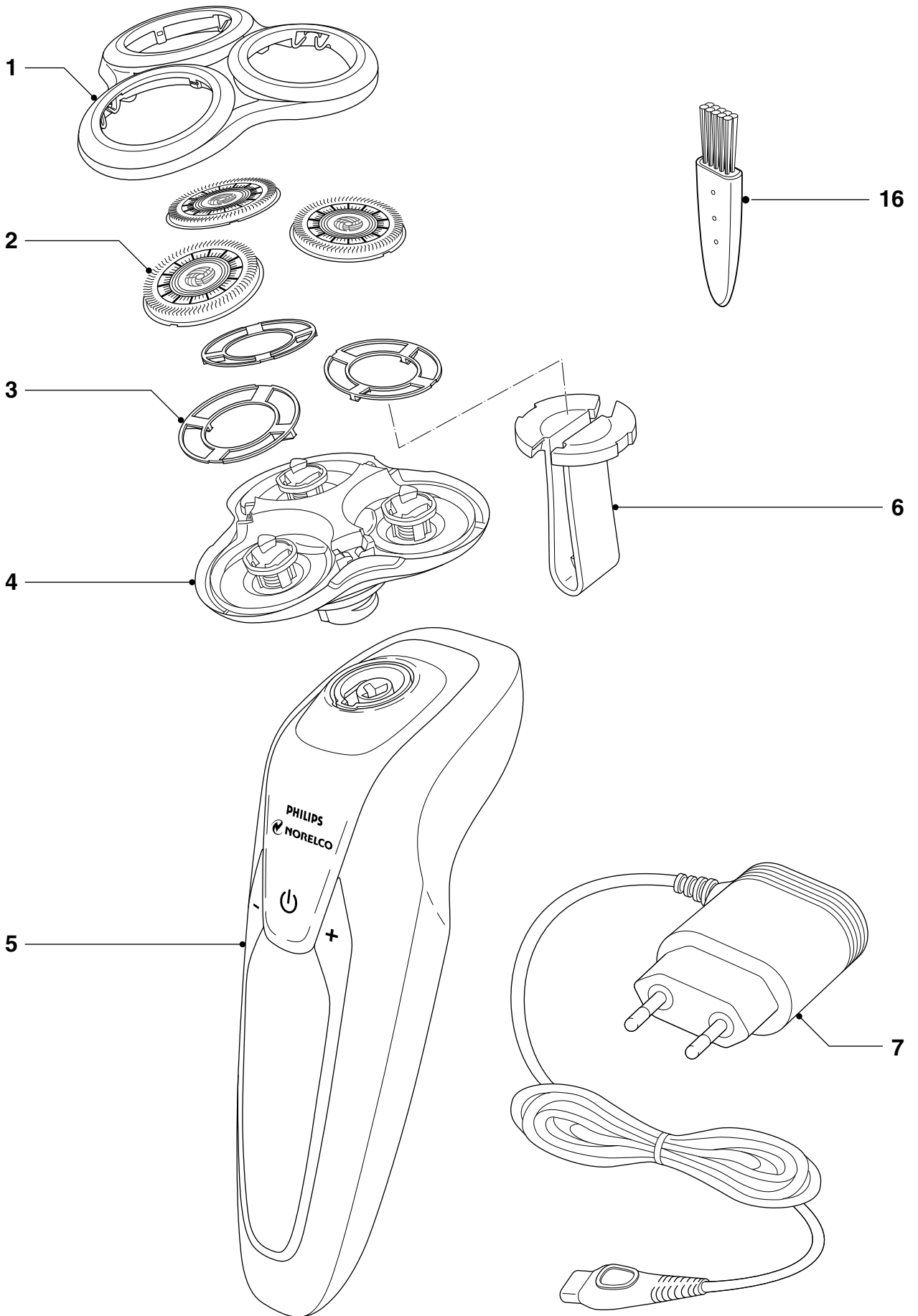
- see Optional exploded view & Parts list

**Place of production date**



BATCH\_NR 513505017  
 ↓  
 1350  
 YYWW

Pos	Service code	Description
1	4222 036 24331	Bracket
2	4222 036 24341	Shaving heads
3	4222 036 24351	Holder
4	4222 036 24371	Shaving unit bottom part
5	4222 036 24601	Handle ROW
	4222 036 26111	Handle JAP
6	4222 036 24361	Holder tool
7	4222 036 24161	Power plug EU
	4222 036 24081	Power plug KR
	4222 036 23771	Power plug JP/TW/MX/US/CA
	4222 036 24151	Power plug AUS
	4222 036 23911	Power plug CN
8	4222 027 21541	Protecting cap
9	4222 039 36051	Styler assy
9a	4222 036 24941	Comb
10	RQ560	Brush
11	4222 036 26721	Brush body
12	RQ563	3 pack brush
13	4222 036 24551	Precision trimmer
14	4222 039 60502	Smartclean SC5203
15	4222 018 61761	Pouch
16	4222 036 02770	Brush
<b>17</b>	<b>4222 036 27121</b>	<b>Stand</b>



Optional Exploded view

S9511

