

Service
Service
Service



Philips Consumer Lifestyle

Service Manual

Product information

Service scenario:

- Repair
- Parts exchange

General:

- Rechargeable
- World-wide automatic voltage selection
- Washable
- Wet & dry use (gel)

Safety information

- This product meets the requirements regarding interference suppression on radio and TV.

Technical information

- Voltage : 100 - 240 V / 50 - 60 Hz
- Shaving heads : SH90
- Battery type : Li-ion
- Run time : up to 50 min
- Stand-by power : 0,1 W
- Max power consumption : 9 W
- SAP coding : S9521

Optional (accessories)

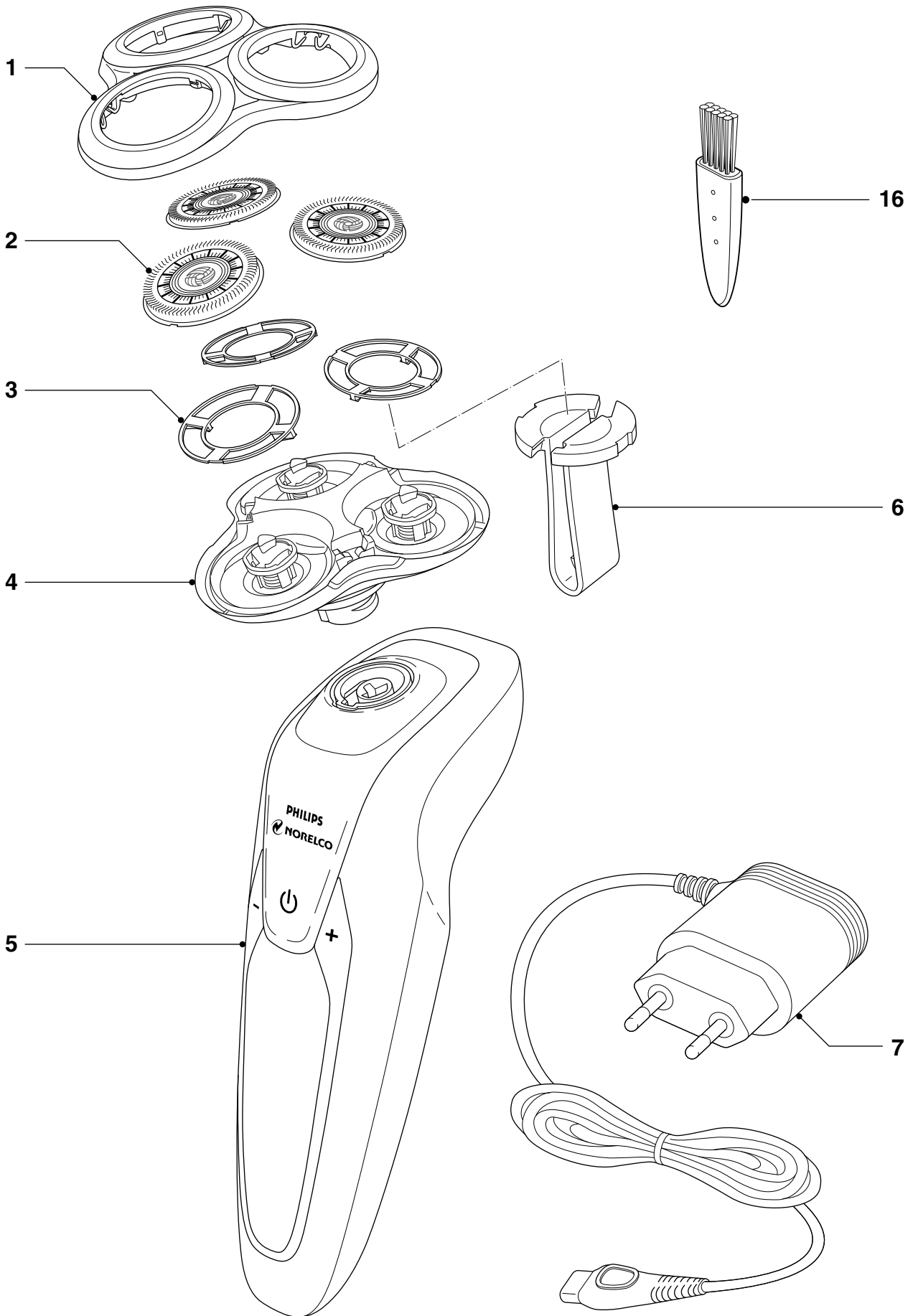
- see Optional exploded view & Parts list

Place of production date



BATCH_NR 513505017
 ↓
 1350
 YYWW

Pos	Service code	Description
1	4222 036 24331	Bracket
2	4222 036 24341	Shaving heads
3	4222 036 24351	Holder
4	4222 036 24371	Shaving unit bottom part
5	4222 036 24711	Handle JAP
6	4222 036 24361	Holder tool
7	4222 036 24161	Power plug EU
	4222 036 23771	Power plug JP/TW/MX/US/CA
8	4222 027 21541	Protecting cap
9	4222 039 36051	Styler assy
9a	4222 036 24941	Comb
10	RQ560	Brush
11	4222 036 26721	Brush body
12	RQ563	3 pack brush
13	4222 036 24551	Precision trimmer
14	4222 039 60502	Smartclean SC5203
15	4222 018 61761	Pouch
16	4222 036 02770	Brush
17	4222 036 27121	Stand



Optional Exploded view

S9521

