

Service
Service
Service



Philips Consumer Lifestyle

Service Manual

PRODUCT INFORMATION

Service scenario:

- Repair
- Parts exchange

General:

- Rechargeable
- World-wide automatic voltage selection
- Washable
- Wet & dry use (gel)

Safety information

- This product meets the requirements regarding interference suppression on radio and TV.

TECHNICAL INFORMATION

- Voltage : 100 - 240 V / 50 - 60 Hz
- Shaving heads : SH90
- Battery type : Li-ion
- Run time : up to 50 min
- Stand-by power : 0,1 W
- Max power consumption : 9 W
- SAP coding : S9711

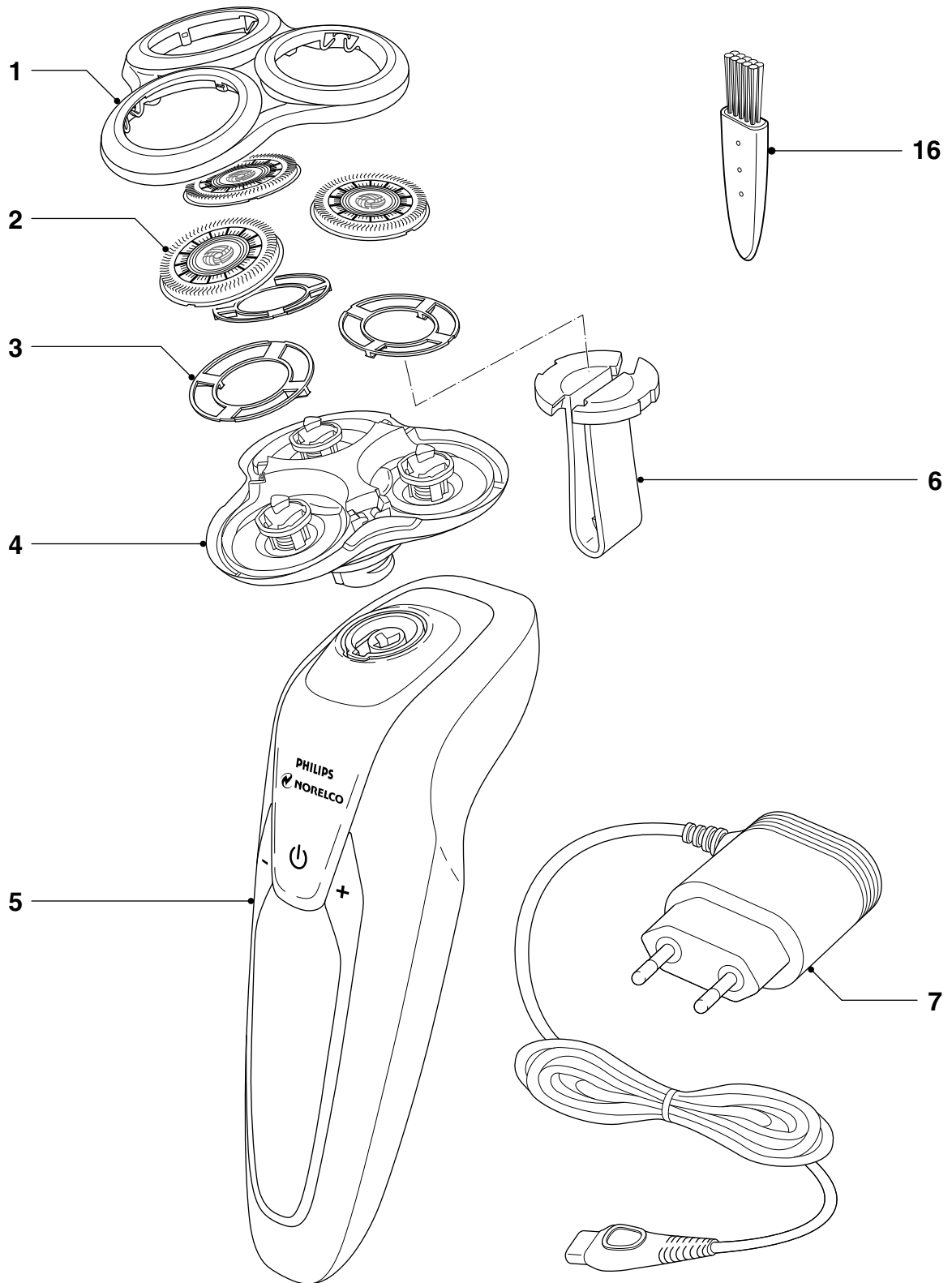
OPTIONAL (accessories)

- See page Optional

Place of production date



BATCH_NR 513505017
 ↓
 1350
 YYWW

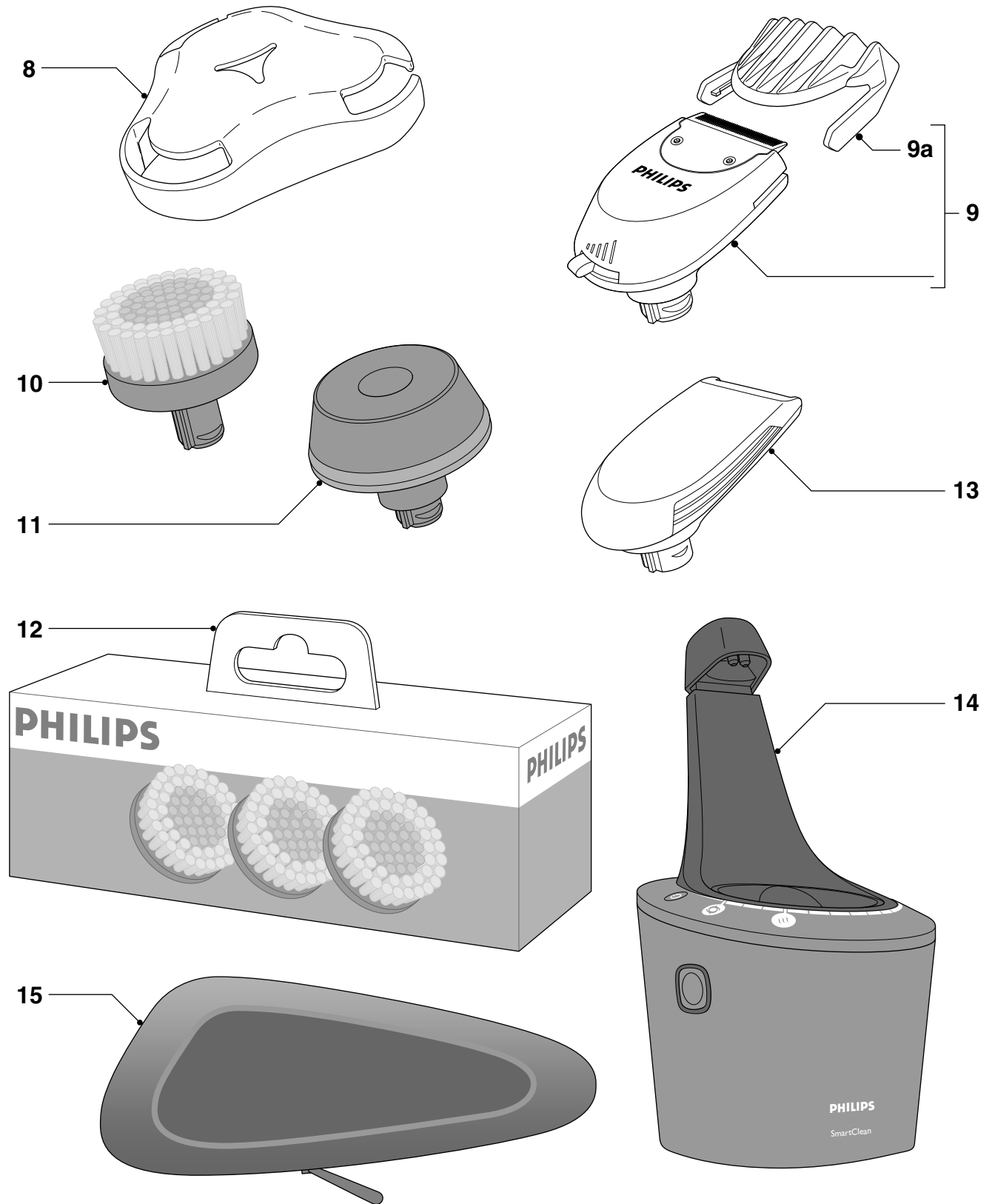


Pos	Service code	Description
1	4222 036 24331	Bracket
2	4222 036 24341	Shaving heads
3	4222 036 24351	Holder
4	4222 036 24371	Shaving unit bottom part
5	4222 036 24621	Handle ROW
5	4222 036 24731	Handle JAP

Pos	Service code	Description
6	4222 036 24361	Holder tool
7	4222 036 24161	Power plug EU
7	4222 036 24081	Power plug KR
7	4222 036 23771	Power plug USA/CAN/JAP/TW
7	4222 036 24151	Power plug AUS
16	4222 036 02770	Brush

OPTIONAL EXPLODED VIEW & PARTS LIST

S9711



Pos	Service code	Description
8	4222 027 21541	Protecting cap
13	4222 036 24551	Precision trimmer
14	4222 039 60502	Smartclean SC5203
15	4222 018 61761	Pouch

Pos	Service code	Description
9	4222 039 36051	Styler assy
9a	4222 036 24941	Comb
10	RQ560	Brush
11	4222 036 26721	Brush body
12	RQ563	3 pack brush

■ = changed