

Service Manual

Product Information

Technology

- ProVelocity steam engine

Fast Crease Removal

- Continuous steam: Up to 110 g/min
- Power: 2400 W
- Pressure: Max 5.2 bar pump
- Ready to use: 2 min
- Steam boost: Up to 240 g
- Steam-on-demand
- Vertical steam
- Voltage: 220 - 240 V

Easy to Use

- Soleplate gliding performance: 3 stars
- Soleplate name: Ceramic
- Water tank capacity: 1300 ml
- Cord freedom (swivel): 180° cord freedom
- Hose length: 1.6 m
- Power cord length: 1.65 m
- Ready to use: Light indicator, Sound indicator
- Refill any time during use
- Soleplate scratch resistance: 3 stars
- Tap water suitable

Scale Management

- Descaling and cleaning: Smart Calc Clean
- Descaling reminder: Light, Sound

Storage

- Cord storage: Cord storage compartment
- Hose storage: Hose storage compartment

Accessories Included

- Calc clean container

Size and Weight

- Packaging Dimensions (WxHxL) : 21 x 23 x 35.4 cm
- Product Dimensions (WxHxL) : 25 x 27 x 40 cm
- Total Weight with Packaging : 4.1 kg
- Weight of Iron : 1.25 kg
- Weight of Iron + Base : 2.9 kg

Green efficiency

- Product packaging: 100% recyclable


Safety Information

- This product meets the requirements regarding interference suppression on radio and TV.

Product Matrix

GC6702 – GC6734

				
Model Number	GC6702	GC6704	GC6707	GC6709
Power	2400W	2400W	2400W	2400W
Continuous Steam	110 g/min	110 g/min	110 g/min	110 g/min
Steam Pressure	5.2 Bar	5.2 Bar	5.2 Bar	5.2 Bar
Steam Boost	190g	200g	220g	200g
OptimalTemp	No	No	No	No
Steam Ready Time	2 Min	2 Min	2 Min	2 Min
SolePlate	Ceramic	Ceramic	Ceramic	Ceramic
Calc Clean Solution	Smart Calc Clean	Smart Calc Clean	Smart Calc Clean	Smart Calc Clean
Calc Clean Reminder	Sound & Light	Sound & Light	Sound & Light	Sound & Light
ECO	No	No	No	No
Turbo	No	No	No	No
Water Tank	1300 ml	1300 ml	1300 ml	1300 ml
Storage Solution	No	No	No	No
Safety Auto-Off	No	No	Yes	No
Accessories	Calc Clean Container	Calc Clean Container	Calc Clean Container	Calc Clean Container

			
Model Number	GC6730	GC6733	GC6734
Power	2400W	2400W	2400W
Continuous Steam	110 g/min	110 g/min	110 g/min
Steam Pressure	5.2 Bar	5.2 Bar	5.2 Bar
Steam Boost	220g	230g	240g
OptimalTemp	No	No	No
Steam Ready Time	2 Min	2 Min	2 Min
SolePlate	Ceramic	Ceramic	Ceramic
Calc Clean Solution	Smart Calc Clean	Smart Calc Clean	Smart Calc Clean
Calc Clean Reminder	Sound & Light	Sound & Light	Sound & Light
ECO	No	No	No
Turbo	No	No	No
Water Tank	1300 ml	1300 ml	1300 ml
Storage Solution	Carry Lock	Carry Lock	Carry Lock
Safety Auto-Off	Yes	Yes	Yes
Accessories	Calc Clean Container	Calc Clean Container	Calc Clean Container

POS	Description	GC6704/30	GC6704/30	GC6704/30	GC6704/30
		889670430010	889670430220	889670430290	889670430380
		BENELUX	GERMANY	FRANCE	ITALY
		12NC	12NC	12NC	12NC
1	BUTTON	996510077407	996510077407	996510077407	996510077407
2	TOP COVER	996510077391	996510077391	996510077391	996510077391
3	LED PCB ASM+BUTTON BOX	996510077398	996510077398	996510077398	996510077398
4	DIAL KNOB	996510077382	996510077382	996510077382	996510077382
5	KNOB CYLINDER	996510070238	996510070238	996510070238	996510070238
6	POTENTIOMETER ASM	996510077377	996510077377	996510077377	996510077377
7	SPRING 5	996510070215	996510070215	996510070215	996510070215
8	HOUSING	996510077381	996510077381	996510077381	996510077381
9	POTENTIOMETER BOX	996510077397	996510077397	996510077397	996510077397
10	STEAM TUBE CONNECTOR	996510070223	996510070223	996510070223	996510070223
11	PHENOLIC	996510077399	996510077399	996510077399	996510077399
12	THROAT CLAMP 1	996510070224	996510070224	996510070224	996510070224
13	BASE	996510077378	996510077378	996510077378	996510077378
14	THERMAL INSULATION	996510070202	996510070202	996510070202	996510070202
15	SILICON FIBER TUBE	996510070198	996510070198	996510070198	996510070198
16	CERAMIC RING	996510070231	996510070231	996510070231	996510070231
17	SOLEPLATE ASM+ NTC ASSY	996510077405	996510077405	996510077405	996510077405
18	EXTERNAL TOOTH WASHER 1 (Φ3.2×Φ6.5×0.4)	996510077467	996510077467	996510077467	996510077467
19	FUSE CLAMP	996510077396	996510077396	996510077396	996510077396
20	EXTERNAL TOOTH WASHER 2(Φ4.3×Φ8.0×0.5)	996510077468	996510077468	996510077468	996510077468
21	SPRING WASHER	996510077413	996510077413	996510077413	996510077413
22	SEAL RING 1	996510077384	996510077384	996510077384	996510077384
23	SQUARE WASHER	996510077388	996510077388	996510077388	996510077388
24	BEND CONNECTOR	996510070246	996510070246	996510070246	996510070246
25	THROAT CLIP 2	996510070203	996510070203	996510070203	996510070203
26	CORD CLAMP 1	996510070247	996510070247	996510070247	996510070247
27	BACK COVER	996510077403	996510077403	996510077403	996510077403
28	STEAM KNOB	996510077408	996510077408	996510077408	996510077408
29	CORD BUSHING	996510073693	996510073693	996510073693	996510073693
30	POWER PCB ASM+POWER PCB BOX+SILICON PAD	996510077393	996510077393	996510077393	996510077393
31	SPRING 1	996510077387	996510077387	996510077387	996510077387
32	SWITCH HOLE COVER	996510077414	996510077414	996510077414	996510077414
33	CLOSED-END TERMINAL	996510070228	996510070228	996510070228	996510070228
34	CONNECTION WIRE ASM	996510077383	996510077383	996510077383	996510077383
35	WATER TANK ASSY	996510077409	996510077409	996510077409	996510077409
36	UNIT BASE BODY	996510077394	996510077394	996510077394	996510077394
37	FRONT LOCK ASSY	NA	NA	NA	NA
38	SILICON TUBE 1 (Φ3.8*Φ7*220MM)	996510077395	996510077395	996510077395	996510077395

POS	Description	GC6704/30	GC6704/30	GC6704/30	GC6704/30
		889670430010	889670430220	889670430290	889670430380
		BENELUX	GERMANY	FRANCE	ITALY
		12NC	12NC	12NC	12NC
39	SILICON TUBE 2 (Φ4*Φ8*100MM)	996510077379	996510077379	996510077379	996510077379
40	SAFETY VALVE ASSY	996510077404	996510077404	996510077404	996510077404
41	CORD CLAMP 2	996510070205	996510070205	996510070205	996510070205
42	TERMINAL BLOCK	996510077034	996510077034	996510077034	996510077034
43	ROCKER SWITCH	996510077456	996510077456	996510077456	996510077456
44	SWITCH BRACKET	996510077392	996510077392	996510077392	996510077392
45	PUMP BRACKET 1	996510070248	996510070248	996510070248	996510070248
46	PUMP BRACKET 2	996510070216	996510070216	996510070216	996510070216
47	UNIT BASE COVER	996510077389	996510077389	996510077389	996510077389
48	PUMP	996510077401	996510077401	996510077401	996510077401
49	INSULATION BASE	996510077411	996510077411	996510077411	996510077411
50	POWER CORD ASSY	996510077412	996510077412	996510077412	996510077412
51	SCREW CAP	996510073708	996510073708	996510073708	996510073708
52	BOTTOM BACK BASE COVER	996510077402	996510077402	996510077402	996510077402

POS	Description	GC6704/30	GC6704/31	GC6704/36	GC6704/36
		889670430640	889670431160	889670436150	889670436600
		THAILAND	SWITZERLAND	UK	MEA
		12NC	12NC	12NC	12NC
1	BUTTON	996510077407	996510077407	996510077407	996510077407
2	TOP COVER	996510077391	996510077391	996510077391	996510077391
3	LED PCB ASM+BUTTON BOX	996510077398	996510077398	996510077398	996510077398
4	DIAL KNOB	996510077382	996510077382	996510077382	996510077382
5	KNOB CYLINDER	996510070238	996510070238	996510070238	996510070238
6	POTENTIOMETER ASM	996510077377	996510077377	996510077377	996510077377
7	SPRING 5	996510070215	996510070215	996510070215	996510070215
8	HOUSING	996510077381	996510077381	996510077381	996510077381
9	POTENTIOMETER BOX	996510077397	996510077397	996510077397	996510077397
10	STEAM TUBE CONNECTOR	996510070223	996510070223	996510070223	996510070223
11	PHENOLIC	996510077399	996510077399	996510077399	996510077399
12	THROAT CLAMP 1	996510070224	996510070224	996510070224	996510070224
13	BASE	996510077378	996510077378	996510077378	996510077378
14	THERMAL INSULATION	996510070202	996510070202	996510070202	996510070202
15	SILICON FIBER TUBE	996510070198	996510070198	996510070198	996510070198
16	CERAMIC RING	996510070231	996510070231	996510070231	996510070231
17	SOLEPLATE ASM+ NTC ASSY	996510077405	996510077405	996510077405	996510077405
18	EXTERNAL TOOTH WASHER 1 (Φ3.2×Φ6.5×0.4)	996510077467	996510077467	996510077467	996510077467
19	FUSE CLAMP	996510077396	996510077396	996510077396	996510077396
20	EXTERNAL TOOTH WASHER 2(Φ4.3×Φ8.0×0.5)	996510077468	996510077468	996510077468	996510077468
21	SPRING WASHER	996510077413	996510077413	996510077413	996510077413
22	SEAL RING 1	996510077384	996510077384	996510077384	996510077384
23	SQUARE WASHER	996510077388	996510077388	996510077388	996510077388
24	BEND CONNECTOR	996510070246	996510070246	996510070246	996510070246
25	THROAT CLIP 2	996510070203	996510070203	996510070203	996510070203
26	CORD CLAMP 1	996510070247	996510070247	996510070247	996510070247
27	BACK COVER	996510077403	996510077403	996510077403	996510077403
28	STEAM KNOB	996510077408	996510077408	996510077408	996510077408
29	CORD BUSHING	996510073693	996510073693	996510073693	996510073693
30	POWER PCB ASM+POWER PCB BOX+SILICON PAD	996510077393	996510077393	996510077393	996510077393
31	SPRING 1	996510077387	996510077387	996510077387	996510077387
32	SWITCH HOLE COVER	996510077414	996510077414	996510077414	996510077414
33	CLOSED-END TERMINAL	996510070228	996510070228	996510070228	996510070228
34	CONNECTION WIRE ASM	996510077383	996510077383	996510077383	996510077383
35	WATER TANK ASSY	996510077409	996510077409	996510077409	996510077409
36	UNIT BASE BODY	996510077394	996510077394	996510077394	996510077394
37	FRONT LOCK ASSY	NA	NA	NA	NA
38	SILICON TUBE 1 Φ3.8*Φ7*220MM)	996510077395	996510077395	996510077395	996510077395

POS	Description	GC6704/30	GC6704/31	GC6704/36	GC6704/36
		889670430640	889670431160	889670436150	889670436600
		THAILAND	SWITZERLAND	UK	MEA
		12NC	12NC	12NC	12NC
42	TERMINAL BLOCK	996510077034	996510077034	996510077034	996510077034
43	ROCKER SWITCH	996510077456	996510077456	996510077456	996510077456
44	SWITCH BRACKET	996510077392	996510077392	996510077392	996510077392
45	PUMP BRACKET 1	996510070248	996510070248	996510070248	996510070248
46	PUMP BRACKET 2	996510070216	996510070216	996510070216	996510070216
47	UNIT BASE COVER	996510077389	996510077389	996510077389	996510077389
48	PUMP	996510077401	996510077401	996510077401	996510077401
49	INSULATION BASE	996510077411	996510077411	996510077411	996510077411
50	POWER CORD ASSY	996510078665	996510078657	996510077418	996510077418
51	SCREW CAP	996510073708	996510073708	996510073708	996510073708
52	BOTTOM BACK BASE COVER	996510077402	996510077402	996510077402	996510077402

POS	Description	GC6707/20	GC6707/20	GC6707/20	GC6709/20
		889670720010	889670720180	889670720290	889670920010
		BELENUX	IBERIA	FRANCE	BENELUX
		12NC	12NC	12NC	12NC
1	BUTTON	996510077407	996510077407	996510077407	996510077407
2	TOP COVER	996510077415	996510077415	996510077415	996510077415
3	LED PCB ASM+BUTTON BOX	996510077398	996510077398	996510077398	996510077398
4	DIAL KNOB	996510077417	996510077417	996510077417	996510077417
5	KNOB CYLINDER	996510070238	996510070238	996510070238	996510070238
6	POTENTIOMETER ASM	996510077377	996510077377	996510077377	996510077377
7	SPRING 5	996510070215	996510070215	996510070215	996510070215
8	HOUSING	996510077381	996510077381	996510077381	996510077381
9	POTENTIOMETER BOX	996510077397	996510077397	996510077397	996510077397
10	STEAM TUBE CONNECTOR	996510070223	996510070223	996510070223	996510070223
11	PHENOLIC	996510077399	996510077399	996510077399	996510077399
12	THROAT CLAMP 1	996510070224	996510070224	996510070224	996510070224
13	BASE	996510077378	996510077378	996510077378	996510077378
14	THERMAL INSULATION	996510070202	996510070202	996510070202	996510070202
15	SILICON FIBER TUBE	996510070198	996510070198	996510070198	996510070198
16	CERAMIC RING	996510070231	996510070231	996510070231	996510070231
17	SOLEPLATE ASM+ NTC ASSY	996510077405	996510077405	996510077405	996510077405
18	EXTERNAL TOOTH WASHER 1 (Φ3.2×Φ6.5×0.4)	996510077467	996510077467	996510077467	996510077467
19	FUSE CLAMP	996510077396	996510077396	996510077396	996510077396
20	EXTERNAL TOOTH WASHER 2(Φ4.3×Φ8.0×0.5)	996510077468	996510077468	996510077468	996510077468
21	SPRING WASHER	996510077413	996510077413	996510077413	996510077413
22	SEAL RING 1	996510077384	996510077384	996510077384	996510077384
23	SQUARE WASHER	996510077388	996510077388	996510077388	996510077388
24	BEND CONNECTOR	996510070246	996510070246	996510070246	996510070246
25	THROAT CLIP 2	996510070203	996510070203	996510070203	996510070203
26	CORD CLAMP 1	996510070247	996510070247	996510070247	996510070247
27	BACK COVER	996510077406	996510077406	996510077406	996510077406
28	STEAM KNOB	996510077416	996510077416	996510077416	996510077416
29	CORD BUSHING	996510073693	996510073693	996510073693	996510073693
30	POWER PCB ASM+POWER PCB BOX+SILICON PAD	996510077393	996510077393	996510077393	996510077393
31	SPRING 1	996510077387	996510077387	996510077387	996510077387
32	SWITCH HOLE COVER	996510077414	996510077414	996510077414	996510077414
33	CLOSED-END TERMINAL	996510070228	996510070228	996510070228	996510070228
34	CONNECTION WIRE ASM	996510077383	996510077383	996510077383	996510077383
35	WATER TANK ASSY	996510077419	996510077419	996510077419	996510077419
36	UNIT BASE BODY	996510077394	996510077394	996510077394	996510077394
37	FRONT LOCK ASSY	NA	NA	NA	NA
38	SILICON TUBE 1 (Φ3.8*Φ7*220MM)	996510077395	996510077395	996510077395	996510077395

POS	Description	GC6707/20	GC6707/20	GC6707/20	GC6709/20
		889670720010	889670720180	889670720290	889670920010
		BELENUX	IBERIA	FRANCE	BENELUX
		12NC	12NC	12NC	12NC
39	SILICON TUBE 2 (Φ4*Φ8*100MM)	996510077379	996510077379	996510077379	996510077379
40	SAFETY VALVE ASSY	996510077404	996510077404	996510077404	996510077404
41	CORD CLAMP 2	996510070205	996510070205	996510070205	996510070205
42	TERMINAL BLOCK	996510077034	996510077034	996510077034	996510077034
43	ROCKER SWITCH	996510077456	996510077456	996510077456	996510077456
44	SWITCH BRACKET	996510077392	996510077392	996510077392	996510077392
45	PUMP BRACKET 1	996510070248	996510070248	996510070248	996510070248
46	PUMP BRACKET 2	996510070216	996510070216	996510070216	996510070216
47	UNIT BASE COVER	996510077389	996510077389	996510077389	996510077389
48	PUMP	996510077401	996510077401	996510077401	996510077401
49	INSULATION BASE	996510077411	996510077411	996510077411	996510077411
50	POWER CORD ASSY	996510077412	996510077412	996510077412	996510077412
51	SCREW CAP	996510073708	996510073708	996510073708	996510073708
52	BOTTOM BACK BASE COVER	996510077402	996510077402	996510077402	996510077402

POS	Description	GC6709/20	GC6709/20	GC6709/20	GC6709/20
		889670920220	889670920300	889670920380	889670920400
		GERMANY	RUSSIA	ITALY	EEU
		12NC	12NC	12NC	12NC
1	BUTTON	996510077407	996510077407	996510077407	996510077407
2	TOP COVER	996510077415	996510077415	996510077415	996510077415
3	LED PCB ASM+BUTTON BOX	996510077398	996510077398	996510077398	996510077398
4	DIAL KNOB	996510077417	996510077417	996510077417	996510077417
5	KNOB CYLINDER	996510070238	996510070238	996510070238	996510070238
6	POTENTIOMETER ASM	996510077377	996510077377	996510077377	996510077377
7	SPRING 5	996510070215	996510070215	996510070215	996510070215
8	HOUSING	996510077381	996510077381	996510077381	996510077381
9	POTENTIOMETER BOX	996510077397	996510077397	996510077397	996510077397
10	STEAM TUBE CONNECTOR	996510070223	996510070223	996510070223	996510070223
11	PHENOLIC	996510077399	996510077399	996510077399	996510077399
12	THROAT CLAMP 1	996510070224	996510070224	996510070224	996510070224
13	BASE	996510077378	996510077378	996510077378	996510077378
14	THERMAL INSULATION	996510070202	996510070202	996510070202	996510070202
15	SILICON FIBER TUBE	996510070198	996510070198	996510070198	996510070198
16	CERAMIC RING	996510070231	996510070231	996510070231	996510070231
17	SOLEPLATE ASM+ NTC ASSY	996510077405	996510077405	996510077405	996510077405
18	EXTERNAL TOOTH WASHER 1 (Φ3.2×Φ6.5×0.4)	996510077467	996510077467	996510077467	996510077467
19	FUSE CLAMP	996510077396	996510077396	996510077396	996510077396
20	EXTERNAL TOOTH WASHER 2(Φ4.3×Φ8.0×0.5)	996510077468	996510077468	996510077468	996510077468
21	SPRING WASHER	996510077413	996510077413	996510077413	996510077413
22	SEAL RING 1	996510077384	996510077384	996510077384	996510077384
23	SQUARE WASHER	996510077388	996510077388	996510077388	996510077388
24	BEND CONNECTOR	996510070246	996510070246	996510070246	996510070246
25	THROAT CLIP 2	996510070203	996510070203	996510070203	996510070203
26	CORD CLAMP 1	996510070247	996510070247	996510070247	996510070247
27	BACK COVER	996510077406	996510077406	996510077406	996510077406
28	STEAM KNOB	996510077416	996510077416	996510077416	996510077416
29	CORD BUSHING	996510073693	996510073693	996510073693	996510073693
30	POWER PCB ASM+POWER PCB BOX+SILICON PAD	996510077393	996510077393	996510077393	996510077393
31	SPRING 1	996510077387	996510077387	996510077387	996510077387
32	SWITCH HOLE COVER	996510077414	996510077414	996510077414	996510077414
33	CLOSED-END TERMINAL	996510070228	996510070228	996510070228	996510070228
34	CONNECTION WIRE ASM	996510077383	996510077383	996510077383	996510077383
35	WATER TANK ASSY	996510077419	996510077419	996510077419	996510077419
36	UNIT BASE BODY	996510077394	996510077394	996510077394	996510077394
37	FRONT LOCK ASSY	NA	NA	NA	NA
38	SILICON TUBE 1 (Φ3.8*Φ7*220MM)	996510077395	996510077395	996510077395	996510077395

POS	Description	GC6709/20	GC6709/20	GC6709/20	GC6709/20
		889670920220	889670920300	889670920380	889670920400
		GERMANY	RUSSIA	ITALY	EEU
		12NC	12NC	12NC	12NC
39	SILICON TUBE 2 (Φ4*Φ8*100MM)	996510077379	996510077379	996510077379	996510077379
40	SAFETY VALVE ASSY	996510077404	996510077404	996510077404	996510077404
41	CORD CLAMP 2	996510070205	996510070205	996510070205	996510070205
42	TERMINAL BLOCK	996510077034	996510077034	996510077034	996510077034
43	ROCKER SWITCH	996510077456	996510077456	996510077456	996510077456
44	SWITCH BRACKET	996510077392	996510077392	996510077392	996510077392
45	PUMP BRACKET 1	996510070248	996510070248	996510070248	996510070248
46	PUMP BRACKET 2	996510070216	996510070216	996510070216	996510070216
47	UNIT BASE COVER	996510077389	996510077389	996510077389	996510077389
48	PUMP	996510077401	996510077401	996510077401	996510077401
49	INSULATION BASE	996510077411	996510077411	996510077411	996510077411
50	POWER CORD ASSY	996510077412	996510077412	996510077412	996510077412
51	SCREW CAP	996510073708	996510073708	996510073708	996510073708
52	BOTTOM BACK BASE COVER	996510077402	996510077402	996510077402	996510077402

Part Lists

GC6702 – GC6734

POS	Description	GC6709/21	GC6709/26	GC6730/30	GC6730/30
		889670921160	889670926150	889673030010	889673030220
		SWITZERLAND	UK	BELENUX	GERMANY
		12NC	12NC	12NC	12NC
1	BUTTON	996510077407	996510077407	996510077407	996510077407
2	TOP COVER	996510077415	996510077415	996510077391	996510077391
3	LED PCB ASM+BUTTON BOX	996510077398	996510077398	996510077398	996510077398
4	DIAL KNOB	996510077417	996510077417	996510077382	996510077382
5	KNOB CYLINDER	996510070238	996510070238	996510070238	996510070238
6	POTENTIOMETER ASM	996510077377	996510077377	996510077377	996510077377
7	SPRING 5	996510070215	996510070215	996510070215	996510070215
8	HOUSING	996510077381	996510077381	996510077381	996510077381
9	POTENTIOMETER BOX	996510077397	996510077397	996510077397	996510077397
10	STEAM TUBE CONNECTOR	996510070223	996510070223	996510070223	996510070223
11	PHENOLIC	996510077399	996510077399	996510077399	996510077399
12	THROAT CLAMP 1	996510070224	996510070224	996510070224	996510070224
13	BASE	996510077378	996510077378	996510077378	996510077378
14	THERMAL INSULATION	996510070202	996510070202	996510070202	996510070202
15	SILICON FIBER TUBE	996510070198	996510070198	996510070198	996510070198
16	CERAMIC RING	996510070231	996510070231	996510070231	996510070231
17	SOLEPLATE ASM+ NTC ASSY	996510077405	996510077405	996510077405	996510077405
18	EXTERNAL TOOTH WASHER 1 (Φ3.2×Φ6.5×0.4)	996510077467	996510077467	996510077467	996510077467
19	FUSE CLAMP	996510077396	996510077396	996510077396	996510077396
20	EXTERNAL TOOTH WASHER 2(Φ4.3×Φ8.0×0.5)	996510077468	996510077468	996510077468	996510077468
21	SPRING WASHER	996510077413	996510077413	996510077413	996510077413
22	SEAL RING 1	996510077384	996510077384	996510077384	996510077384
23	SQUARE WASHER	996510077388	996510077388	996510077388	996510077388
24	BEND CONNECTOR	996510070246	996510070246	996510070246	996510070246
25	THROAT CLIP 2	996510070203	996510070203	996510070203	996510070203
26	CORD CLAMP 1	996510070247	996510070247	996510070247	996510070247
27	BACK COVER	996510077406	996510077406	996510077403	996510077403
28	STEAM KNOB	996510077416	996510077416	996510077408	996510077408
29	CORD BUSHING	996510073693	996510073693	996510073693	996510073693
30	POWER PCB ASM+POWER PCB BOX+SILICON PAD	996510077393	996510077393	996510077393	996510077393
31	SPRING 1	996510077387	996510077387	996510077387	996510077387
32	SWITCH HOLE COVER	996510077414	996510077414	996510077414	996510077414
33	CLOSED-END TERMINAL	996510070228	996510070228	996510070228	996510070228
34	CONNECTION WIRE ASM	996510077383	996510077383	996510077383	996510077383
35	WATER TANK ASSY	996510077419	996510077419	996510079411	996510079411
36	UNIT BASE BODY	996510077394	996510077394	V6 996510080225	996510080225
37	FRONT LOCK ASSY	NA	NA	996510077421	996510077421
38	SILICON TUBE 1 (Φ3.8*Φ7*220MM)	996510077395	996510077395	996510077395	996510077395

POS	Description	GC6709/21	GC6709/26	GC6730/30	GC6730/30
		889670921160	889670926150	889673030010	889673030220
		SWITZERLAND	UK	BELENUX	GERMANY
		12NC	12NC	12NC	12NC
39	SILICON TUBE 2 (Φ4*Φ8*100MM)	996510077379	996510077379	996510077379	996510077379
40	SAFETY VALVE ASSY	996510077404	996510077404	996510077404	996510077404
41	CORD CLAMP 2	996510070205	996510070205	996510070205	996510070205
42	TERMINAL BLOCK	996510077034	996510077034	996510077034	996510077034
43	ROCKER SWITCH	996510077456	996510077456	996510077456	996510077456
44	SWITCH BRACKET	996510077392	996510077392	996510077392	996510077392
45	PUMP BRACKET 1	996510070248	996510070248	996510070248	996510070248
46	PUMP BRACKET 2	996510070216	996510070216	996510070216	996510070216
47	UNIT BASE COVER	996510077389	996510077389	996510080226	996510080226
48	PUMP	996510077401	996510077401	996510077401	996510077401
49	INSULATION BASE	996510077411	996510077411	V6 996510079409	996510079409
50	POWER CORD ASSY	996510078657	996510077418	996510077412	996510077412
51	SCREW CAP	996510073708	996510073708	996510073708	996510073708
52	BOTTOM BACK BASE COVER	996510077402	996510077402	996510077402	996510077402

Part Lists

GC6702 – GC6734

POS	Description	GC6730/30	GC6730/30	GC6730/36	GC6733/20
		889673030300	889673030400	889673036150	889673320010
		RUSSIA	EEU	UK	WEU
		12NC	12NC	12NC	12NC
1	BUTTON	996510077407	996510077407	996510077407	996510077407
2	TOP COVER	996510077391	996510077391	996510077391	996510077415
3	LED PCB ASM+BUTTON BOX	996510077398	996510077398	996510077398	996510077398
4	DIAL KNOB	996510077382	996510077382	996510077382	996510077417
5	KNOB CYLINDER	996510070238	996510070238	996510070238	996510070238
6	POTENTIOMETER ASM	996510077377	996510077377	996510077377	996510077377
7	SPRING 5	996510070215	996510070215	996510070215	996510070215
8	HOUSING	996510077381	996510077381	996510077381	996510077381
9	POTENTIOMETER BOX	996510077397	996510077397	996510077397	996510077397
10	STEAM TUBE CONNECTOR	996510070223	996510070223	996510070223	996510070223
11	PHENOLIC	996510077399	996510077399	996510077399	996510077399
12	THROAT CLAMP 1	996510070224	996510070224	996510070224	996510070224
13	BASE	996510077378	996510077378	996510077378	996510077378
14	THERMAL INSULATION	996510070202	996510070202	996510070202	996510070202
15	SILICON FIBER TUBE	996510070198	996510070198	996510070198	996510070198
16	CERAMIC RING	996510070231	996510070231	996510070231	996510070231
17	SOLEPLATE ASM+ NTC ASSY	996510077405	996510077405	996510077405	996510077405
18	EXTERNAL TOOTH WASHER 1 (Φ3.2×Φ6.5×0.4)	996510077467	996510077467	996510077467	996510077467
19	FUSE CLAMP	996510077396	996510077396	996510077396	996510077396
20	EXTERNAL TOOTH WASHER 2(Φ4.3×Φ8.0×0.5)	996510077468	996510077468	996510077468	996510077468
21	SPRING WASHER	996510077413	996510077413	996510077413	996510077413
22	SEAL RING 1	996510077384	996510077384	996510077384	996510077384
23	SQUARE WASHER	996510077388	996510077388	996510077388	996510077388
24	BEND CONNECTOR	996510070246	996510070246	996510070246	996510070246
25	THROAT CLIP 2	996510070203	996510070203	996510070203	996510070203
26	CORD CLAMP 1	996510070247	996510070247	996510070247	996510070247
27	BACK COVER	996510077403	996510077403	996510077403	996510077406
28	STEAM KNOB	996510077408	996510077408	996510077408	996510077416
29	CORD BUSHING	996510073693	996510073693	996510073693	996510073693
30	POWER PCB ASM+POWER PCB BOX+SILICON PAD	996510077393	996510077393	996510077393	996510077393
31	SPRING 1	996510077387	996510077387	996510077387	996510077387
32	SWITCH HOLE COVER	996510077414	996510077414	996510077414	996510077414
33	CLOSED-END TERMINAL	996510070228	996510070228	996510070228	996510070228
34	CONNECTION WIRE ASM	996510077383	996510077383	996510077383	996510077383
35	WATER TANK ASSY	996510079411	996510079411	996510079411	996510079412
36	UNIT BASE BODY	996510080225	996510080225	996510080225	996510080223
37	FRONT LOCK ASSY	996510077421	996510077421	996510077421	996510077421
38	SILICON TUBE 1 (Φ3.8*Φ7*220MM)	996510077395	996510077395	996510077395	996510077395

Part Lists

GC6702 – GC6734

POS	Description	GC6730/30	GC6730/30	GC6730/36	GC6733/20
		889673030300	889673030400	889673036150	889673320010
		RUSSIA	EEU	UK	WEU
		12NC	12NC	12NC	12NC
39	SILICON TUBE 2 (Φ4*Φ8*100MM)	996510077379	996510077379	996510077379	996510077379
40	SAFETY VALVE ASSY	996510077404	996510077404	996510077404	996510077404
41	CORD CLAMP 2	996510070205	996510070205	996510070205	996510070205
42	TERMINAL BLOCK	996510077034	996510077034	996510077034	996510077034
43	ROCKER SWITCH	996510077456	996510077456	996510077456	996510077456
44	SWITCH BRACKET	996510077392	996510077392	996510077392	996510077392
45	PUMP BRACKET 1	996510070248	996510070248	996510070248	996510070248
46	PUMP BRACKET 2	996510070216	996510070216	996510070216	996510070216
47	UNIT BASE COVER	996510080226	996510080226	996510080226	996510080224
48	PUMP	996510077401	996510077401	996510077401	996510077401
V6	INSULATION BASE	996510079409	996510079409	996510079409	996510079409
50	POWER CORD ASSY	996510077412	996510077412	996510077418	996510077412
51	SCREW CAP	996510073708	996510073708	996510073708	996510073708
52	BOTTOM BACK BASE COVER	996510077402	996510077402	996510077402	996510077402

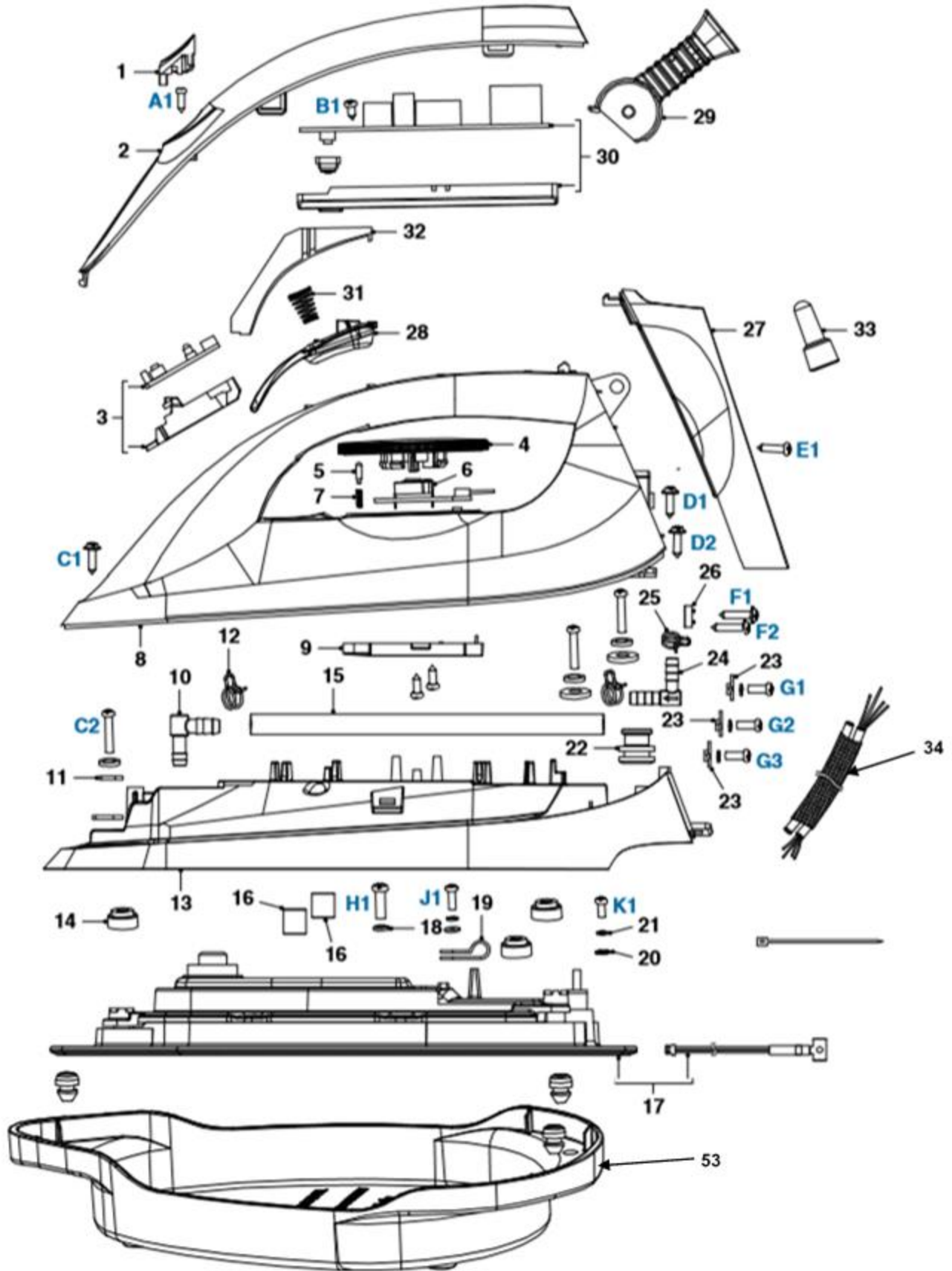
POS	Description	GC6733/20	GC6733/20	GC6733/20	GC6734/20
		889673320180	889673320290	889673320640	889673420220
		IBERIA	FRANCE	THAILAND	GERMANY
		12NC	12NC	12NC	12NC
1	BUTTON	996510077407	996510077407	996510077407	996510077407
2	TOP COVER	996510077415	996510077415	996510077415	996510077415
3	LED PCB ASM+BUTTON BOX	996510077398	996510077398	996510077398	996510077398
4	DIAL KNOB	996510077417	996510077417	996510077417	996510077417
5	KNOB CYLINDER	996510070238	996510070238	996510070238	996510070238
6	POTENTIOMETER ASM	996510077377	996510077377	996510077377	996510077377
7	SPRING 5	996510070215	996510070215	996510070215	996510070215
8	HOUSING	996510077381	996510077381	996510077381	996510077381
9	POTENTIOMETER BOX	996510077397	996510077397	996510077397	996510077397
10	STEAM TUBE CONNECTOR	996510070223	996510070223	996510070223	996510070223
11	PHENOLIC	996510077399	996510077399	996510077399	996510077399
12	THROAT CLAMP 1	996510070224	996510070224	996510070224	996510070224
13	BASE	996510077378	996510077378	996510077378	996510077378
14	THERMAL INSULATION	996510070202	996510070202	996510070202	996510070202
15	SILICON FIBER TUBE	996510070198	996510070198	996510070198	996510070198
16	CERAMIC RING	996510070231	996510070231	996510070231	996510070231
17	SOLEPLATE ASM+ NTC ASSY	996510077405	996510077405	996510077405	996510077405
18	EXTERNAL TOOTH WASHER 1 (Φ3.2×Φ6.5×0.4)	996510077467	996510077467	996510077467	996510077467
19	FUSE CLAMP	996510077396	996510077396	996510077396	996510077396
20	EXTERNAL TOOTH WASHER 2(Φ4.3×Φ8.0×0.5)	996510077468	996510077468	996510077468	996510077468
21	SPRING WASHER	996510077413	996510077413	996510077413	996510077413
22	SEAL RING 1	996510077384	996510077384	996510077384	996510077384
23	SQUARE WASHER	996510077388	996510077388	996510077388	996510077388
24	BEND CONNECTOR	996510070246	996510070246	996510070246	996510070246
25	THROAT CLIP 2	996510070203	996510070203	996510070203	996510070203
26	CORD CLAMP 1	996510070247	996510070247	996510070247	996510070247
27	BACK COVER	996510077406	996510077406	996510077406	996510077406
28	STEAM KNOB	996510077416	996510077416	996510077416	996510077416
29	CORD BUSHING	996510073693	996510073693	996510073693	996510073693
30	POWER PCB ASM+POWER PCB BOX+SILICON PAD	996510077393	996510077393	996510077393	996510077393
31	SPRING 1	996510077387	996510077387	996510077387	996510077387
32	SWITCH HOLE COVER	996510077414	996510077414	996510077414	996510077414
33	CLOSED-END TERMINAL	996510070228	996510070228	996510070228	996510070228
34	CONNECTION WIRE ASM	996510077383	996510077383	996510077383	996510077383
35	WATER TANK ASSY	996510079412	996510079412	996510079412	996510079412
36	UNIT BASE BODY	996510080223	996510080223	996510080223	996510080223
37	FRONT LOCK ASSY	996510077421	996510077421	996510077421	996510077421
38	SILICON TUBE 1 (Φ3.8*Φ7*220MM)	996510077395	996510077395	996510077395	996510077395

POS	Description	GC6733/20	GC6733/20	GC6733/20	GC6734/20
		889673320180	889673320290	889673320640	889673420220
		IBERIA	FRANCE	THAILAND	GERMANY
		12NC	12NC	12NC	12NC
39	SILICON TUBE 2 (Φ4*Φ8*100MM)	996510077379	996510077379	996510077379	996510077379
40	SAFETY VALVE ASSY	996510077404	996510077404	996510077404	996510077404
41	CORD CLAMP 2	996510070205	996510070205	996510070205	996510070205
42	TERMINAL BLOCK	996510077034	996510077034	996510077034	996510077034
43	ROCKER SWITCH	996510077456	996510077456	996510077456	996510077456
44	SWITCH BRACKET	996510077392	996510077392	996510077392	996510077392
45	PUMP BRACKET 1	996510070248	996510070248	996510070248	996510070248
46	PUMP BRACKET 2	996510070216	996510070216	996510070216	996510070216
47	UNIT BASE COVER	996510080224	996510080224	996510080224	996510080224
48	PUMP	996510077401	996510077401	996510077401	996510077401
V6 49	INSULATION BASE	996510079409	996510079409	996510079409	996510079409
50	POWER CORD ASSY	996510077412	996510077412	996510078665	996510077412
51	SCREW CAP	996510073708	996510073708	996510073708	996510073708
52	BOTTOM BACK BASE COVER	996510077402	996510077402	996510077402	996510077402

POS	Description	GC6730/30	GC6733/26
		889673030180	889673326150
		IBERIA	UK
		12NC	12NC
1	BUTTON	996510077407	996510077407
2	TOP COVER	996510077391	996510077415
3	LED PCB ASM+BUTTON BOX	996510077398	996510077398
4	DIAL KNOB	996510077382	996510077417
5	KNOB CYLINDER	996510070238	996510070238
6	POTENTIOMETER ASM	996510077377	996510077377
7	SPRING 5	996510070215	996510070215
8	HOUSING	996510077381	996510077381
9	POTENTIOMETER BOX	996510077397	996510077397
10	STEAM TUBE CONNECTOR	996510070223	996510070223
11	PHENOLIC	996510077399	996510077399
12	THROAT CLAMP 1	996510070224	996510070224
13	BASE	996510077378	996510077378
14	THERMAL INSULATION	996510070202	996510070202
15	SILICON FIBER TUBE	996510070198	996510070198
16	CERAMIC RING	996510070231	996510070231
17	SOLEPLATE ASM+ NTC ASSY	996510077405	996510077405
18	EXTERNAL TOOTH WASHER 1 (Φ3.2×Φ6.5×0.4)	996510077467	996510077467
19	FUSE CLAMP	996510077396	996510077396
20	EXTERNAL TOOTH WASHER 2(Φ4.3×Φ8.0×0.5)	996510077468	996510077468
21	SPRING WASHER	996510077413	996510077413
22	SEAL RING 1	996510077384	996510077384
23	SQUARE WASHER	996510077388	996510077388
24	BEND CONNECTOR	996510070246	996510070246
25	THROAT CLIP 2	996510070203	996510070203
26	CORD CLAMP 1	996510070247	996510070247
27	BACK COVER	996510077403	996510077406
28	STEAM KNOB	996510077408	996510077416
29	CORD BUSHING	996510073693	996510073693
30	POWER PCB ASM+POWER PCB BOX+SILICON PAD	996510077393	996510077393
31	SPRING 1	996510077387	996510077387
32	SWITCH HOLE COVER	996510077414	996510077414
33	CLOSED-END TERMINAL	996510070228	996510070228
34	CONNECTION WIRE ASM	996510077383	996510077383
35	WATER TANK ASSY	996510079411	996510079412
V6 36	UNIT BASE BODY	996510080225	996510080223
37	FRONT LOCK ASSY	996510077421	996510077421
38	SILICON TUBE 1 (Φ3.8*Φ7*220MM)	996510077395	996510077395

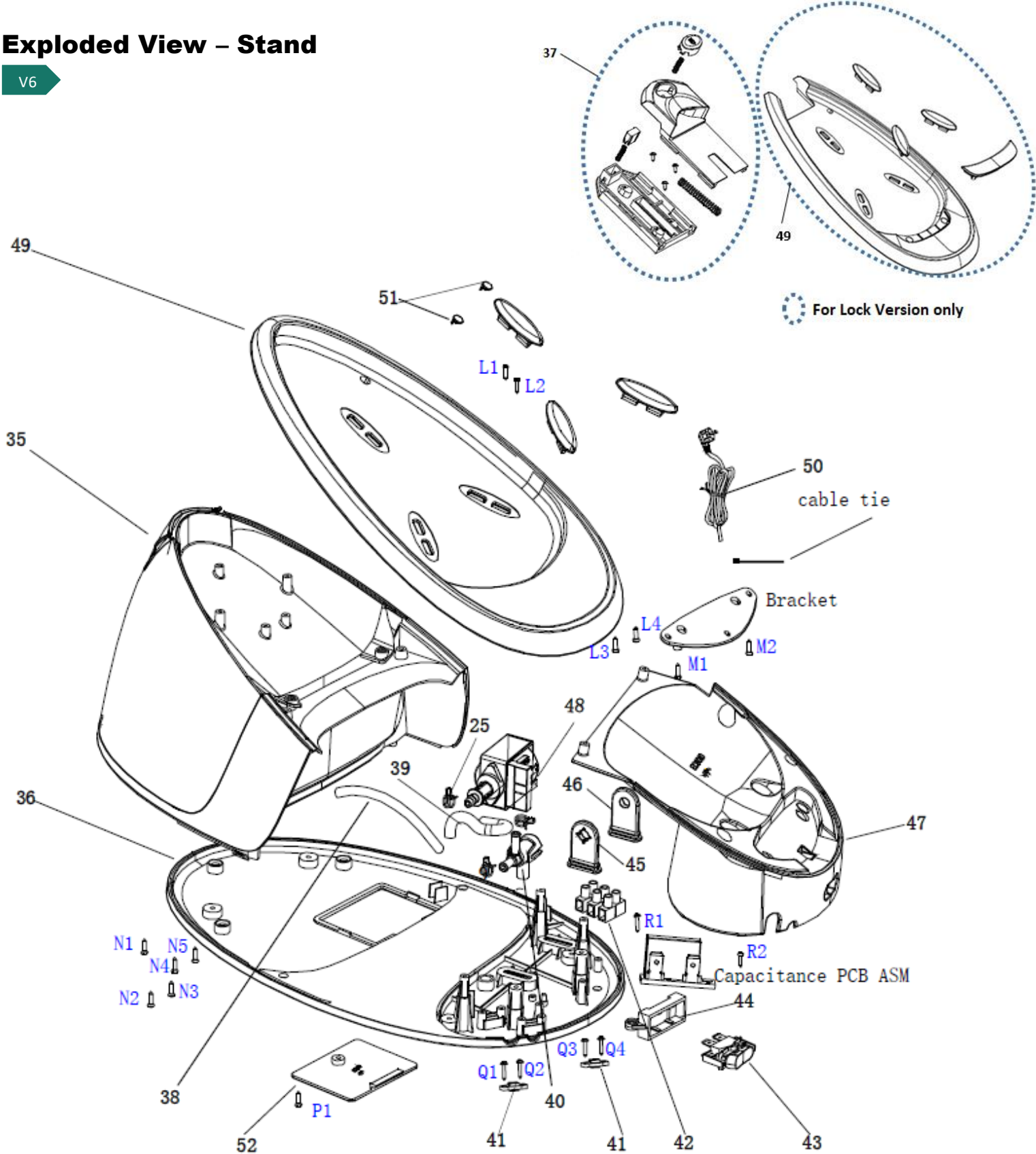
POS	Description	GC6730/30	GC6733/26
		889673030180	889673326150
		IBERIA	UK
		12NC	12NC
39	SILICON TUBE 2 (Φ4*Φ8*100MM)	996510077379	996510077379
40	SAFETY VALVE ASSY	996510077404	996510077404
41	CORD CLAMP 2	996510070205	996510070205
42	TERMINAL BLOCK	996510077034	996510077034
43	ROCKER SWITCH	996510077456	996510077456
44	SWITCH BRACKET	996510077392	996510077392
45	PUMP BRACKET 1	996510070248	996510070248
46	PUMP BRACKET 2	996510070216	996510070216
V6 47	UNIT BASE COVER	996510077389	996510080224
48	PUMP	996510077401	996510077401
49	INSULATION BASE	996510079409	996510079409
50	POWER CORD ASSY	996510077412	996510077418
51	SCREW CAP	996510073708	996510073708
52	BOTTOM BACK BASE COVER	996510077402	996510077402

Exploded View – Iron



Exploded View – Stand

V6



Notes:

Parts without Position number are not service item and cannot order.

Scale: Not to Scale

Disassemble Instruction – Iron

BUTTON 1
TOP COVER 2
LED PCB ASM + BUTTON BOX 3
DIAL KNOB 4
KNOB CYLINDER 5
POTENTIOMETER ASM 6
SPRING 5 7
POTENTIOMETER BOX 9
HOUSING 8

Remove	BUTTON 1
Remove	Screw A1
Remove	Screw B1,B2
Remove	TOP COVER 2
Remove	LED PCB ASM + BUTTON BOX 3
Remove	Screw C1
Remove	DIAL KNOB 4
Remove	KNOB CYLINDER 5
Remove	POTENTIOMETER ASM 6
Remove	SPRING 5 7
Remove	POTENTIOMETER BOX 9
Remove	HOUSING 8

STEAM TUBE CONNECTOR 10
BASE 13
SILICON FIBER TUBE 15
THROAT CLAMP 1 12
BACK COVER 27
CORD CLAMP 1 26
THROAT CLIP 2 25
THROAT CLIP 2 24
SEAL RING 1 22
SQUARE WASHER 23
SOLEPLATE ASM + NTC ASSY 17

Remove	STEAM TUBE CONNECTOR 10
Remove	Screw C2
Remove	BASE 13
Remove	SILICON FIBER TUBE 15
Remove	THROAT CLAMP 1 12
Remove	Screw E1
Remove	Screw D1,D2
Remove	BACK COVER 27
Remove	Screw F1,F2
Remove	CORD CLAMP 1 26
Remove	THROAT CLIP 2 25
Remove	THROAT CLIP 2 24
Remove	SEAL RING 1 22
Remove	SQUARE WASHER 23
Remove	Screw G1 – G3
Remove	SOLEPLATE ASM+ NTC ASSY 17
Remove	Screw H1
Remove	Screw J1
Remove	Screw K1

Disassemble Instruction – Stand

INSULATION BASE 49
WATER TANK ASSY 35
UNIT BASE COVER 47
PUMP 48

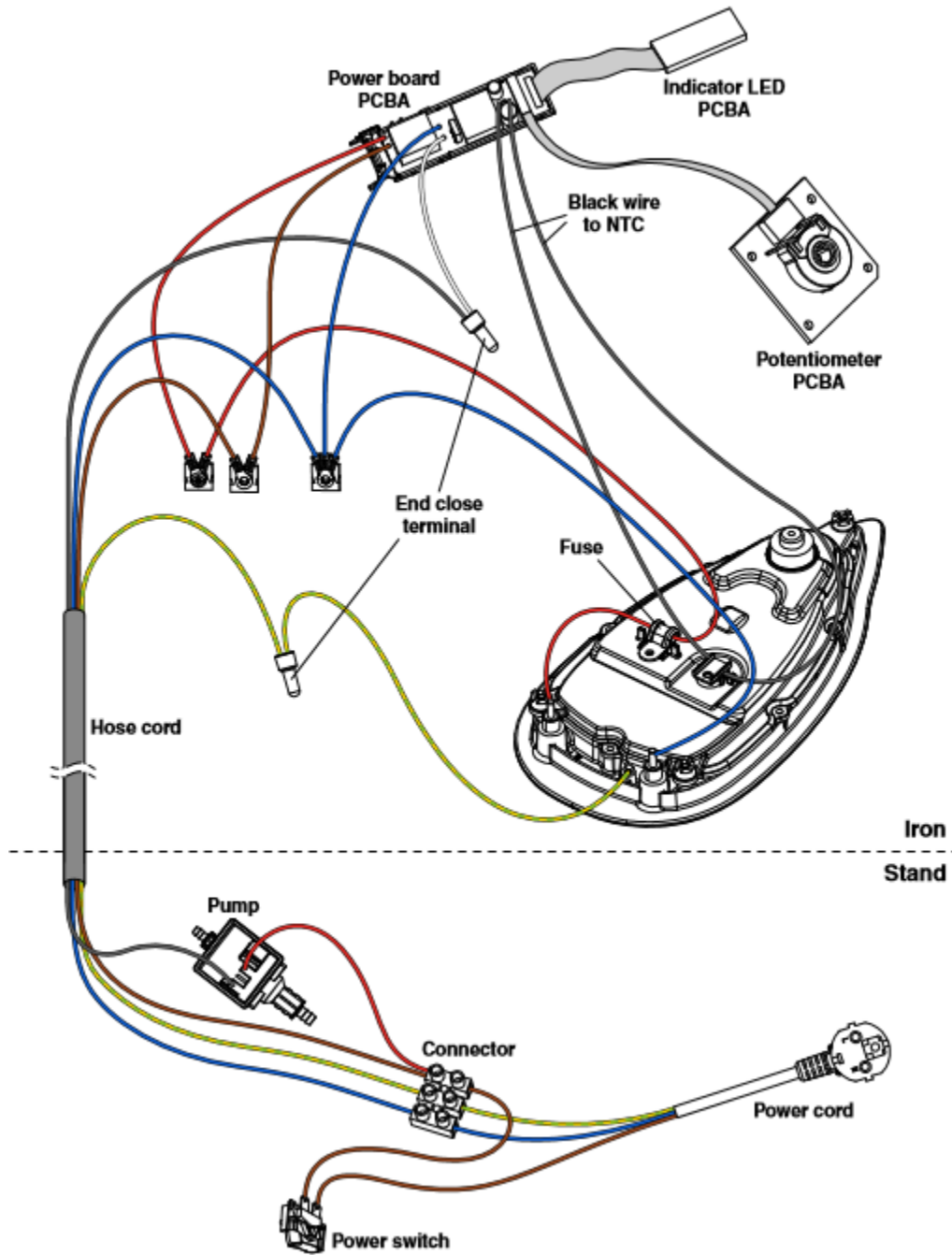
- Remove **INSULATION BASE 49**
- Remove **WATER TANK ASSY 35**
- Remove **Screw M1 - M2**
- Remove **UNIT BASE COVER 47**
- Remove **PUMP 48**

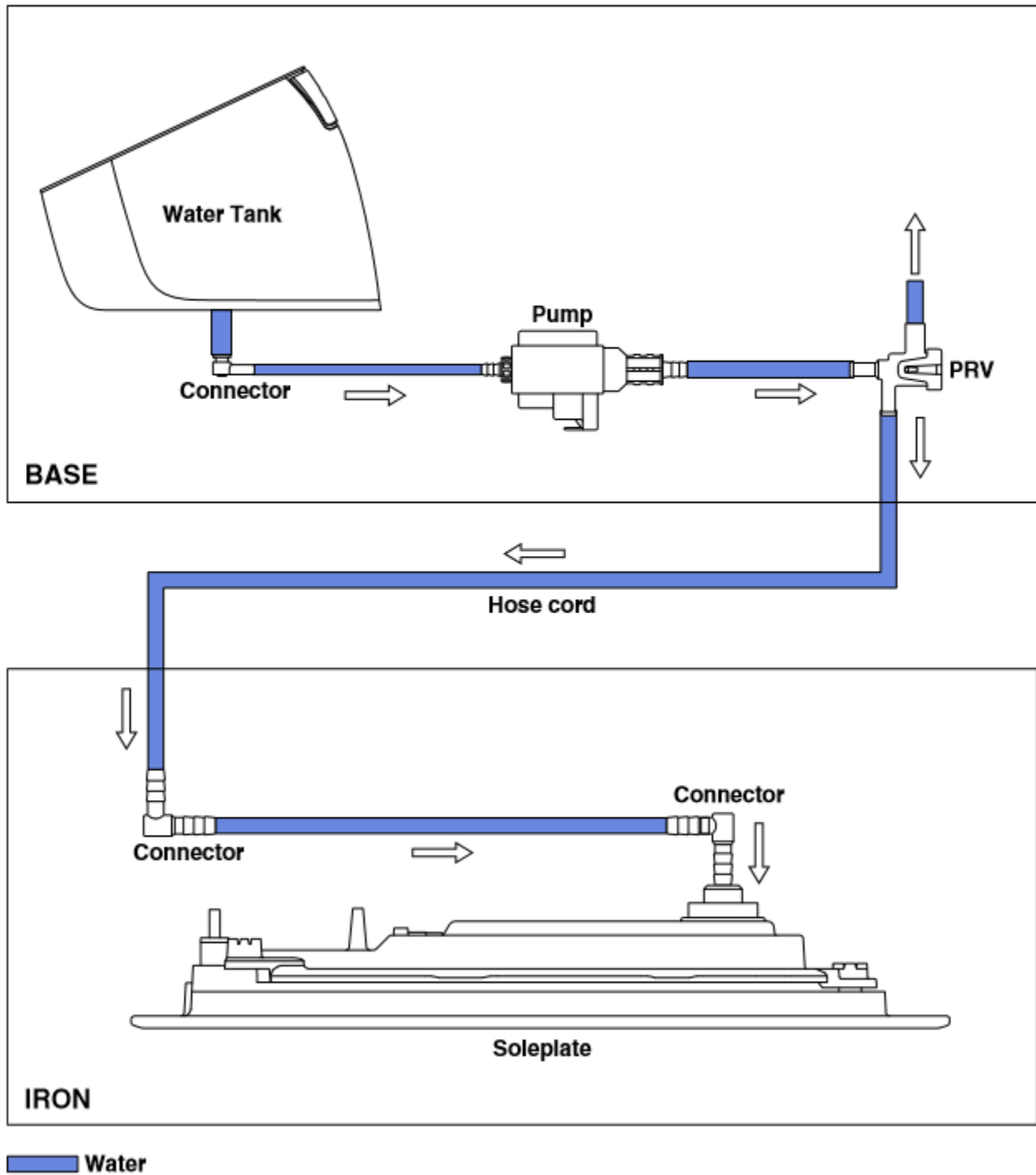
UNIT BASE BODY 36
CORD CLAMP 2 41
BOTTOM BACK BASE COVER 52
ROCKER SWITCH 43
SWITCH BRACKET 44
TERMINAL BLOCK 42

- Remove **Screw N1 - N5**
- Remove **UNIT BASE BODY 36**
- Remove **Screw Q1 - Q4**
- Remove **CORD CLAMP 2 41**
- Remove **Screw P1**
- Remove **BOTTOM BACK BASE COVER 52**
- Remove **ROCKER SWITCH 43**
- Remove **SWITCH BRACKET 44**
- Remove **Screw R1,R2**
- Remove **TERMINAL BLOCK 42**

Wiring Diagram

GC6702 – GC6734

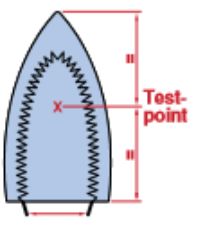




- Due to the high wattage of the iron, only the specified cord set must be used.
- Should damage be observed on the MAINS CORD, it must be replaced. Continued usage is not allowed.
- After the product has been repaired, it should function properly and has to meet the safety requirements & legal regulation as laid down & officially established at this moment.
- The following tests are common checks that are conducted on a repaired product before it is returned to the consumer.

1. Soleplate temperature

Check the soleplate temperature is within IEC requirement.

Soleplate Temperature (Deg C)		Materials, For Example	
Minimum	Maximum		
170	230	All Fabric Types	

2. Leakage current

Check that leakage current is within IEC requirement. Measure leakage current between LIVE/NEUTRAL & EARTH. IEC requirement is that at 230 V supply, the EARTH leakage current must be less than 0.75 mA.

3. Water leakage / Functionality

Check that there is no water leakage from any part of product during operation. Check that the functionality of the product (product dependent) eg. Steaming, variable steam, SOS, ASO etc is working properly.

4. Loose part

Check that there are no loose parts eg. Extra screws in the product that can cause short-circuit or product malfunctions.

5. Fuse open circuit

When replacing fuse, to also service the water tubes which is probably choked with calc.

6. PCBAs ESD control

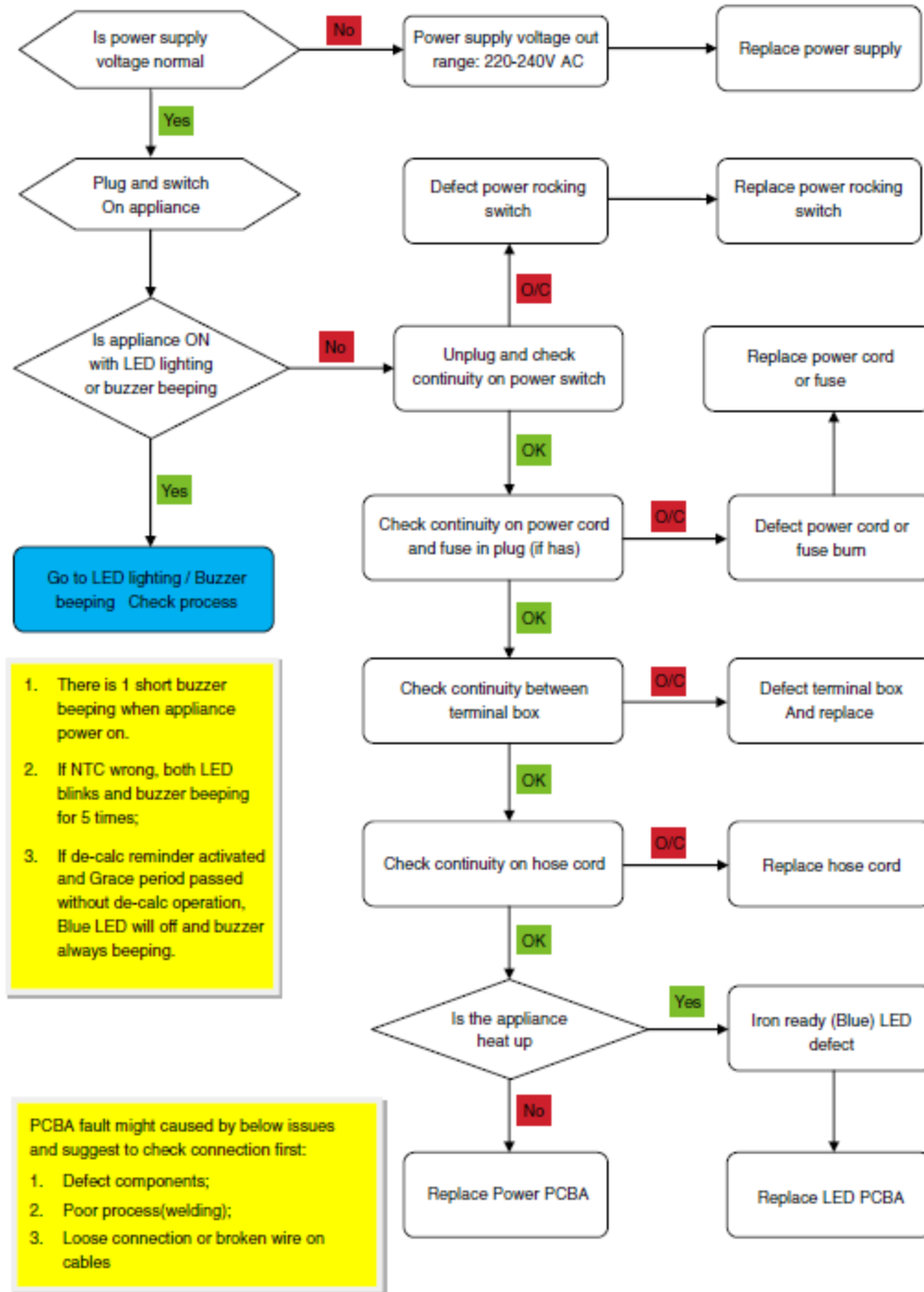
All failed PCBAs including to be packed with ESD bags for shipment.

7. Screws (A to S)

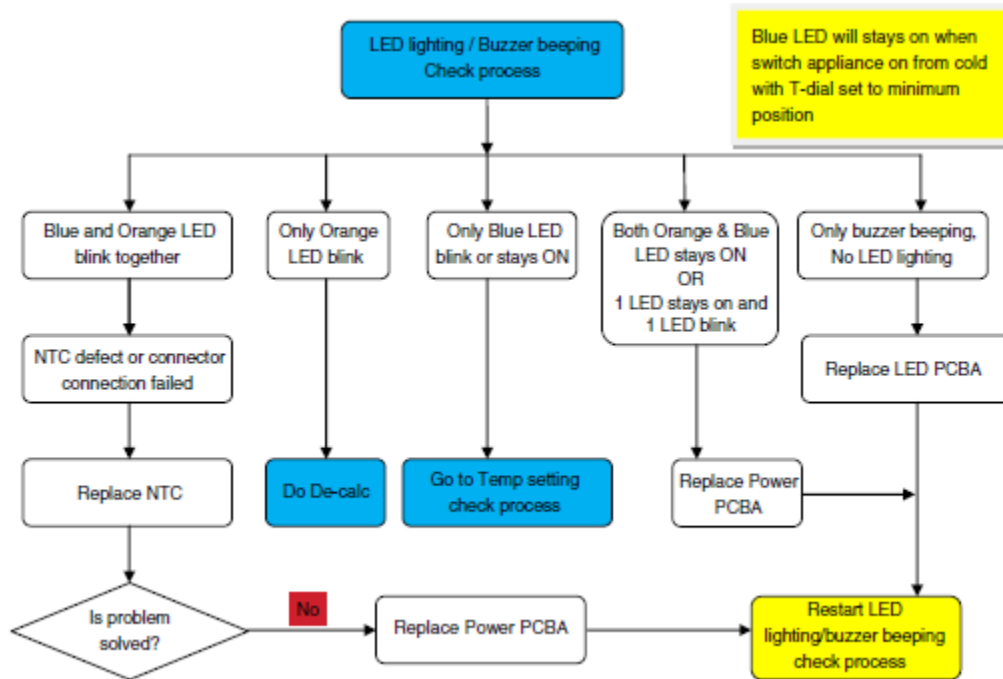
Screws should be as per the Original Disassemble from Product.

8. Self-Check mode (Continue Next Page)

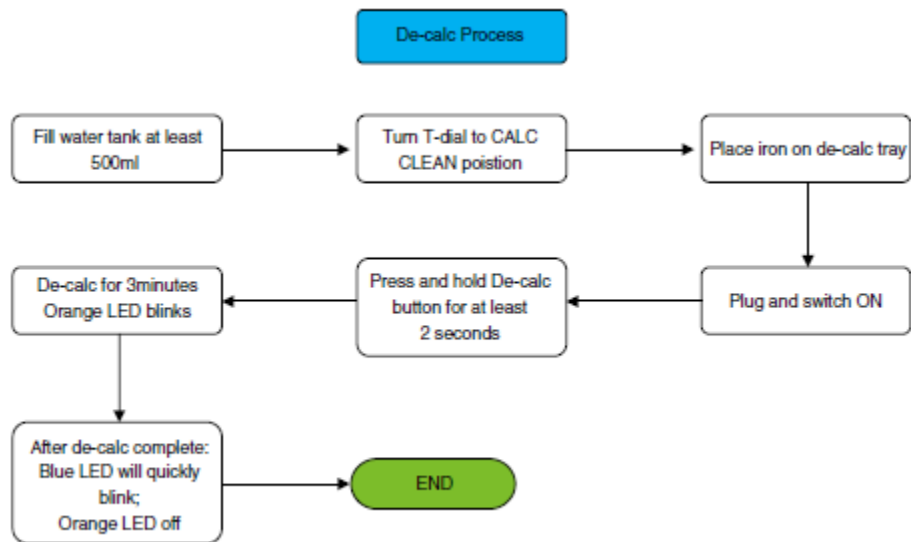
8.1. Trouble Shooting



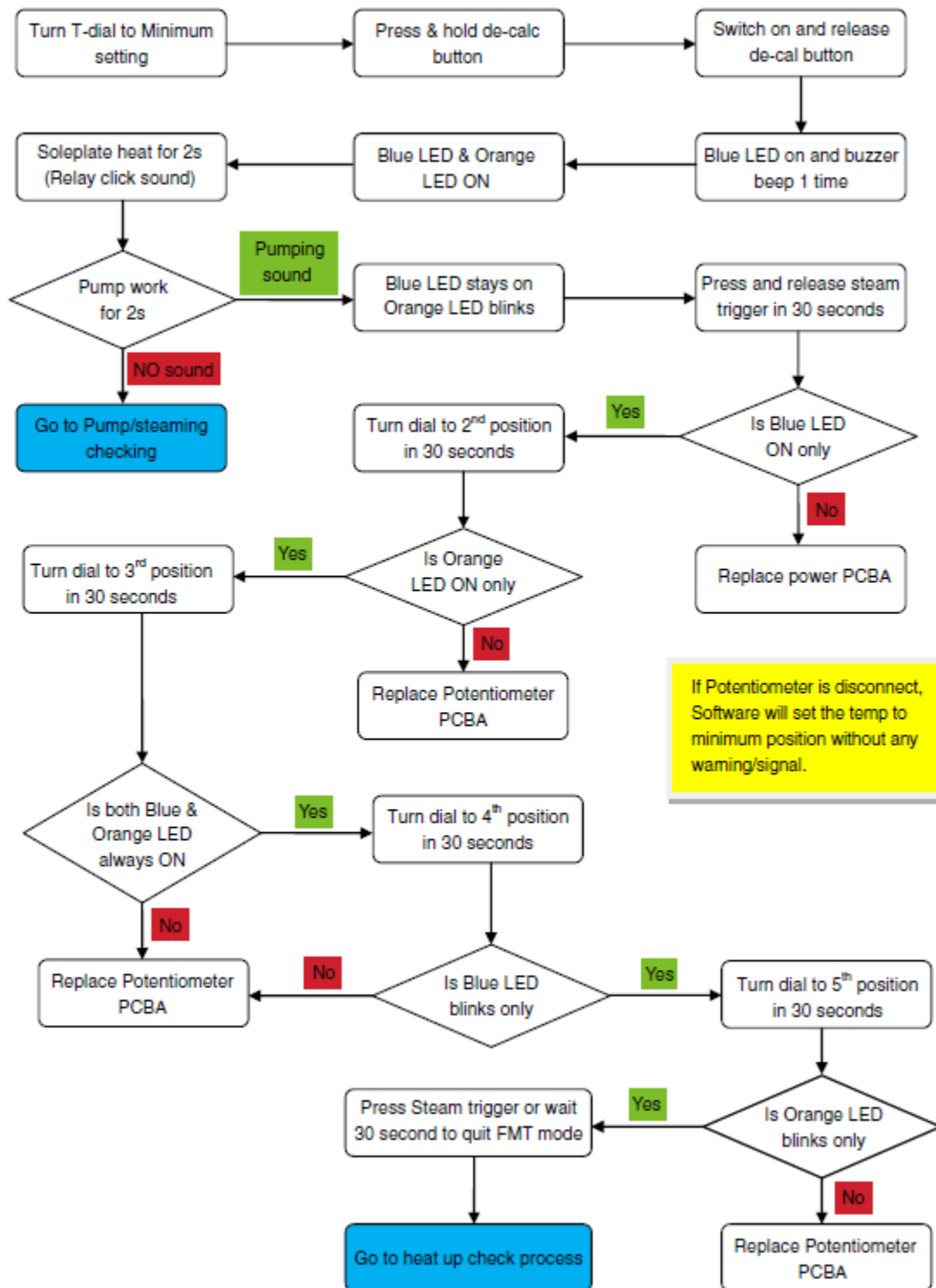
8.2. When there is lighting or beeping after switch on appliance



8.3. De-calc Process

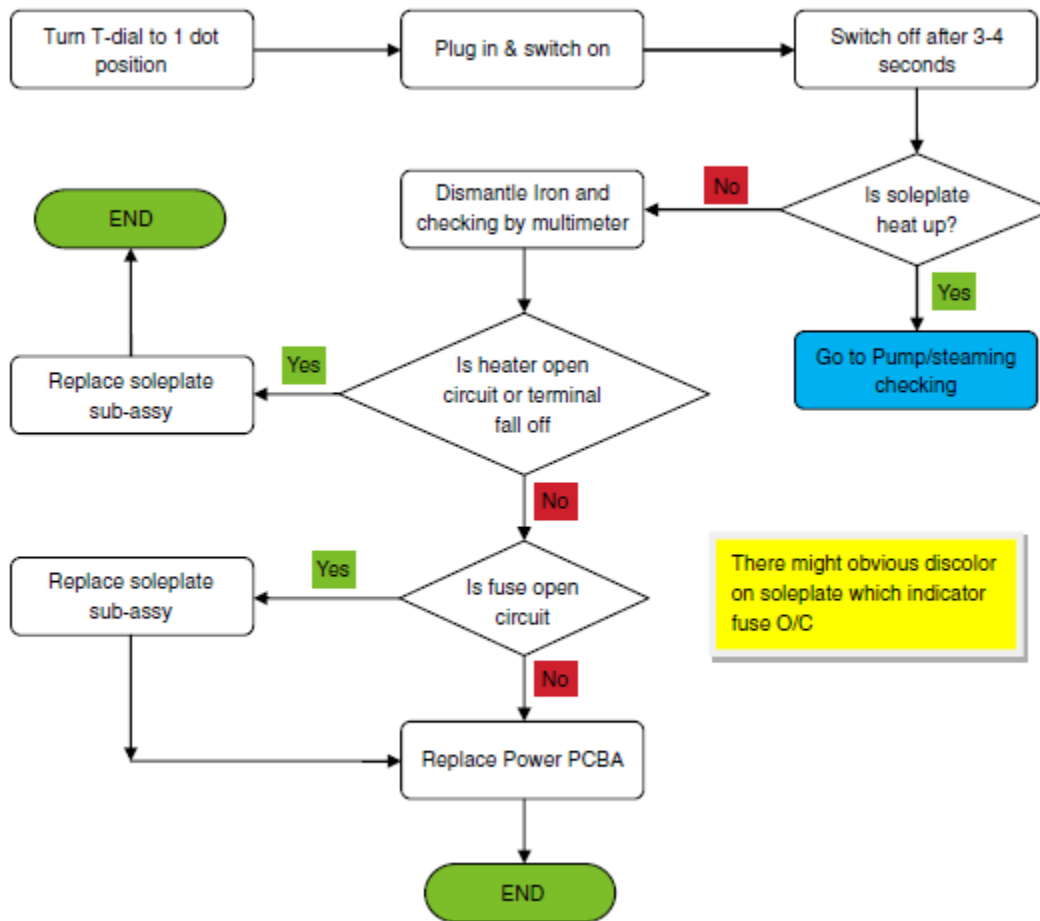


8.4. Temp setting check process (Self-Check mode): (Intend to check potentiometer PCBA)

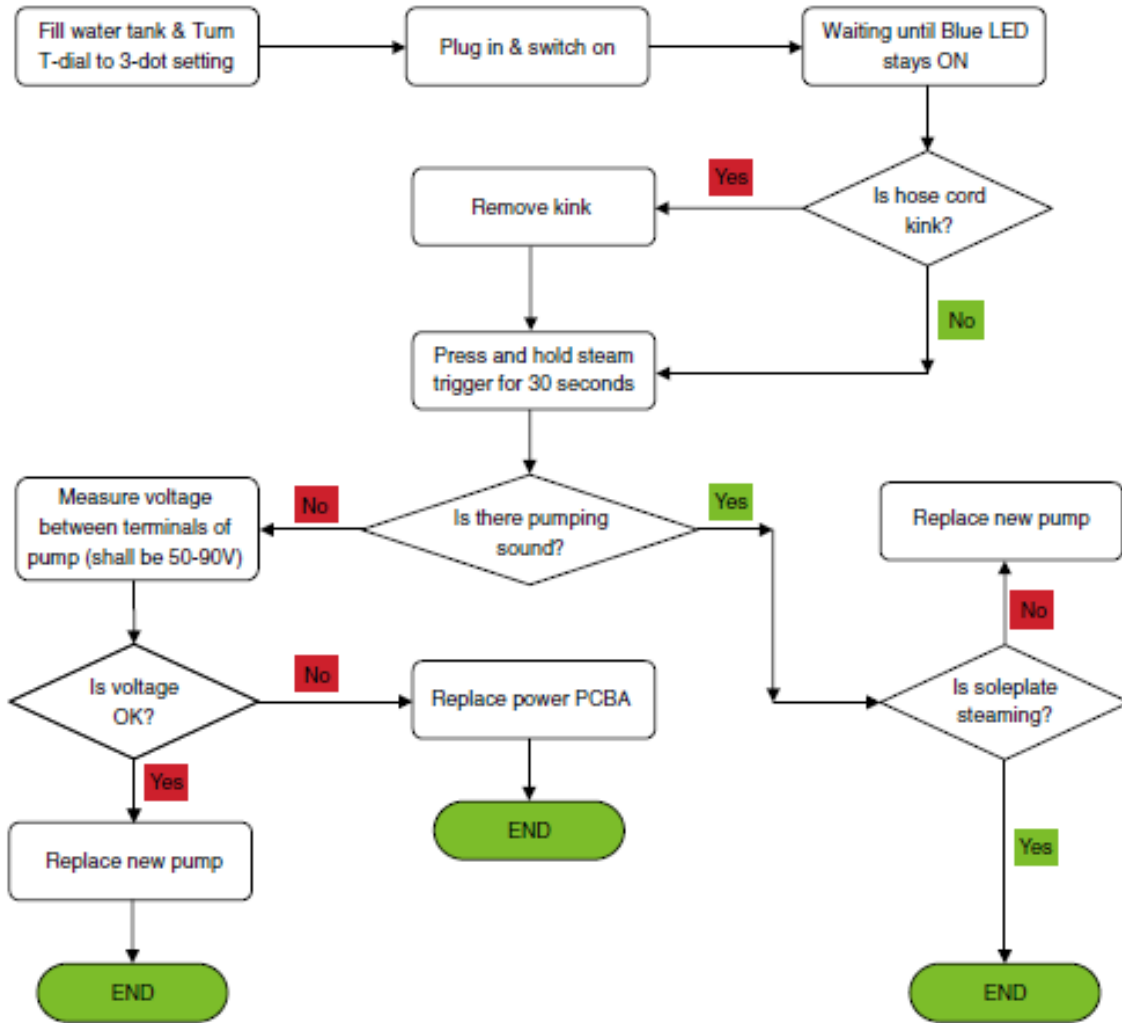


Notes: After Replacing of the PCBA, Restart Self-Check Mode Process

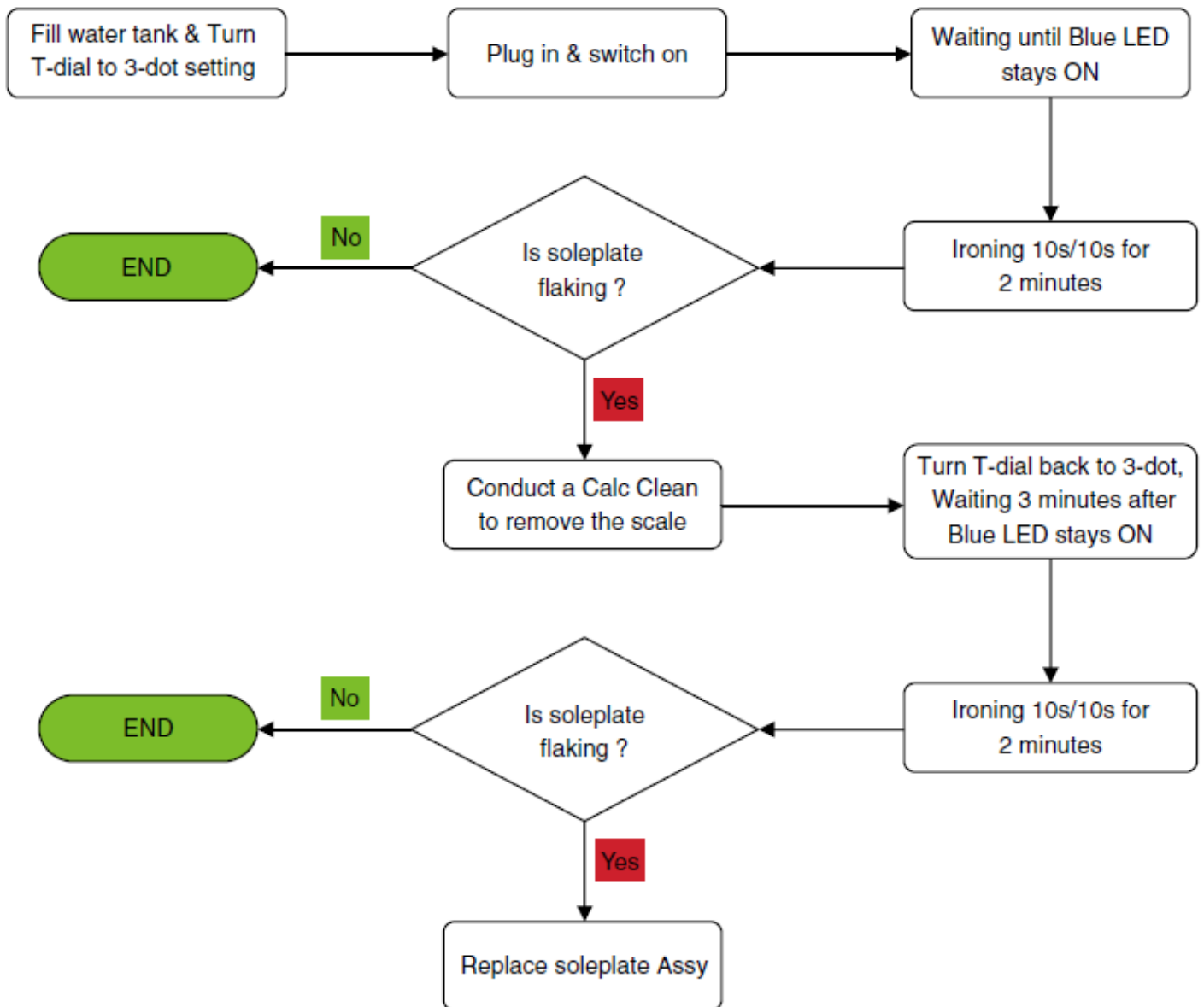
8.5. Soleplate heat up check process:



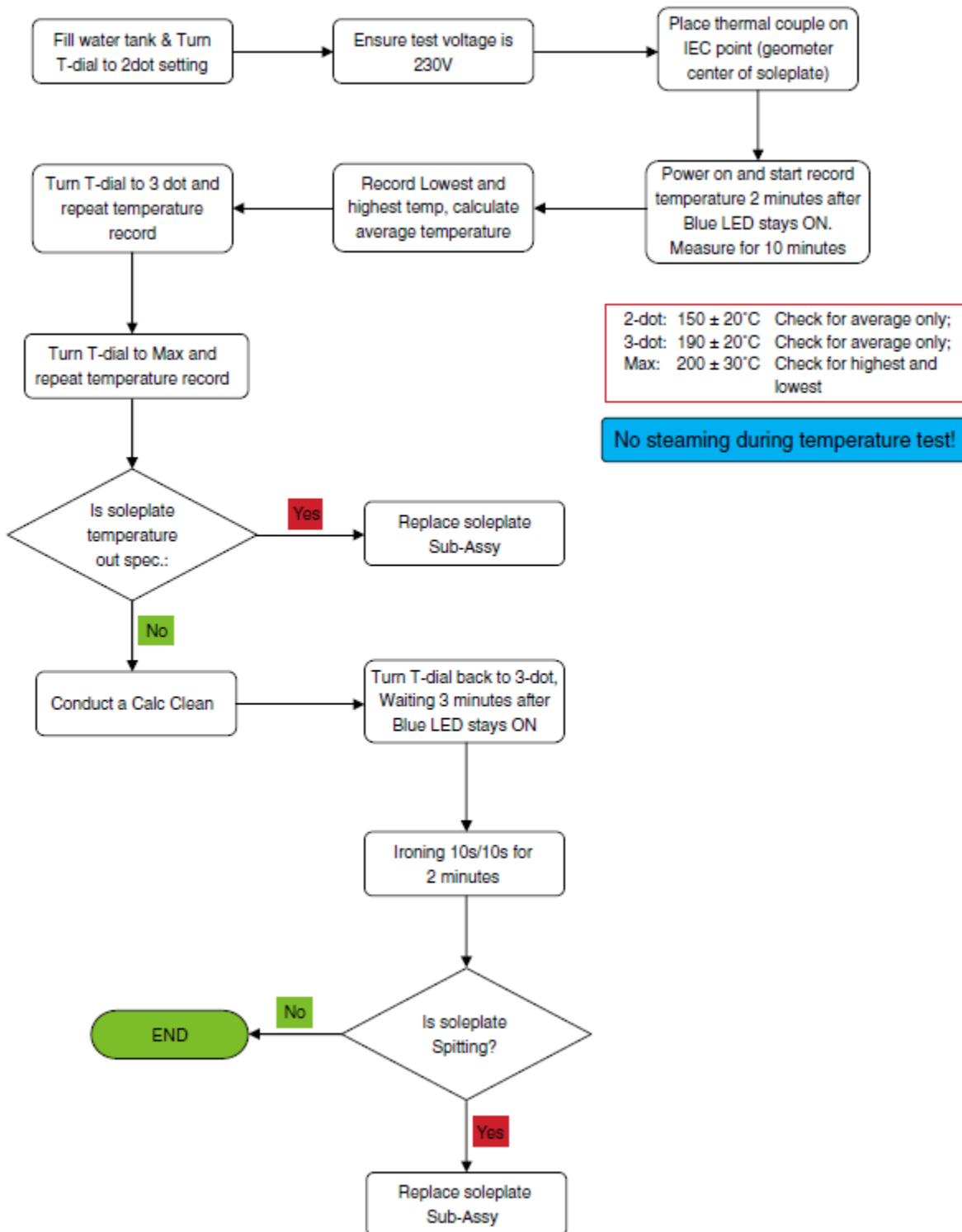
8.6. Pump/steaming Checking process:



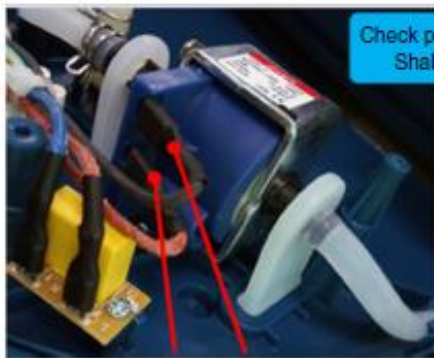
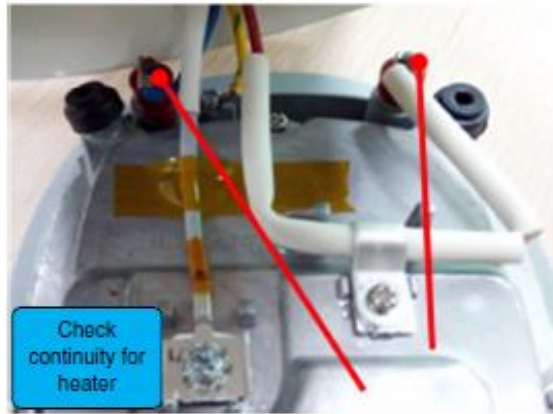
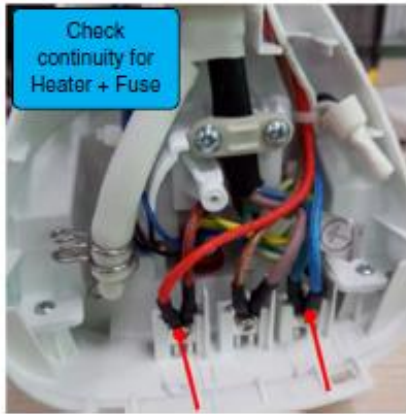
8.7. Process for soleplate Flaking:



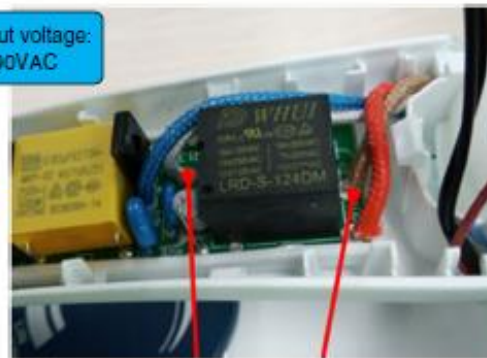
8.8. Process for soleplate spitting/leaking

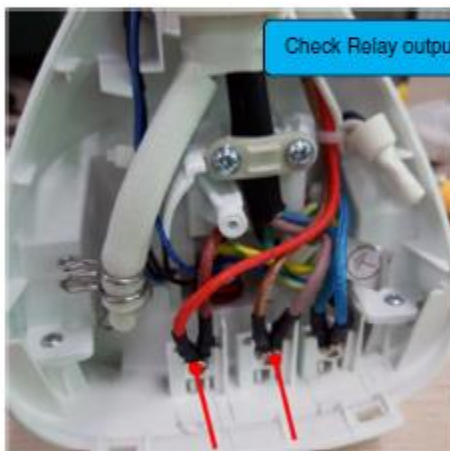
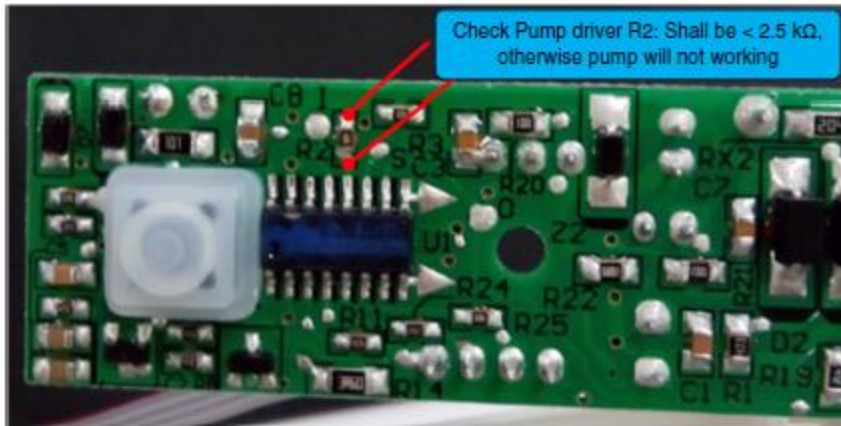


8.9. Measurement Guide:

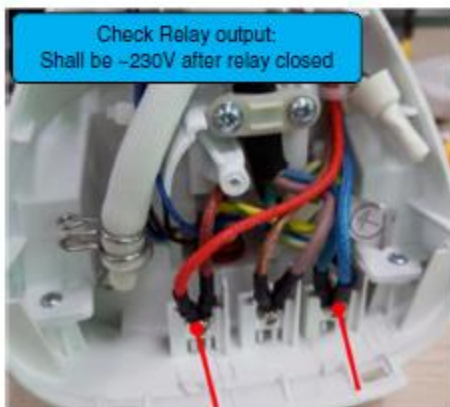


OR





OR



Record History

Version	Records	Author	Date
1	New release	Cathy Dai	May 2017
2	Update Part list by adding: GC6704/31; 889670431160, GC6709/21; 889670921160 GC6704/30; 889670430640, GC6704/36; 889670436600 GC6733/20; 889673320640, GC6730/30; 889673030180 Removed Calc Clean Container from the exploded view – Iron.	Seet BK	6 th Mar 2017
3	Update Part List & Product Matrix by adding: GC6702/20; 889670220290	Seet BK	20 th Apr 2018
4	Update the Explode View – Iron Add position 34 Connection Wire Assy Add Position 53 Calc Clean Container Update Part List: Add Pos 53 Calc Clean Container to all affected Models	Seet BK	21 st May 2018
5	Update part list for correct part number for Water Tank Assy and Insulation Base of following models: 889673030010; 889673030180; 889673030220; 889673036150; 889673320180; 889673320640; 889673326150; 889673420220	Chong Yoke Lan	5 th Sep 2018
6	Update exploded view to resolve IPM-153579 Remove Electrical Diagram Add following versions: GC6707/20; 889670720010, GC6709/20; 889670920300, GC6709/20; 889670920400, GC6730/30; 889673030300, GC6730/30; 889673030400, GC6733/20; 889673320010, GC6733/20; 889673320290 Update part list for Pos. 36 and 47 for GC673X	Chong Yoke Lan	25 th Feb 2019